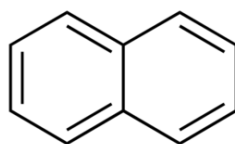


## SECTION 1: Identification of the substance/mixture and of the company/undertaking

### 1.1. Product identifier

Product form	: Substance
Trade name	: NAPHTHALENE AR
EC Index-No.	: 601-052-00-2
EC-No.	: 202-049-5
CAS-No.	: 91-20-3
Product code	: 04736
Type of product	: Hydrocarbons, aromatic
Formula	: C <sub>10</sub> H <sub>8</sub>
Chemical structure	:



Synonyms	: White tar, Camphor tar, Tar camphor, antimite, Albocarbon, Hexalene, Mothballs, Moth flakes
----------	---

### 1.2. Relevant identified uses of the substance or mixture and uses advised against

#### 1.2.1. Relevant identified uses

Use of the substance/mixture	: Laboratory chemicals, Manufacture of substances
------------------------------	---

#### 1.2.2. Uses advised against

No additional information available

### 1.3. Details of the supplier of the safety data sheet

LOBA CHEMIE PVT.LTD.  
107 Wode House Road, Jehangir Villa, Colaba  
400005 Mumbai  
INDIA  
T +91 22 6663 6663, F +91 22 6663 6699  
[info@lobachemie.com](mailto:info@lobachemie.com), [www.lobachemie.com](http://www.lobachemie.com)

### 1.4. Emergency telephone number

Emergency number	: + 91 22 6663 6663 (9:00am - 6:00 pm)
------------------	--

## SECTION 2: Hazards identification

### 2.1. Classification of the substance or mixture

#### Classification according to Regulation (EC) No. 1272/2008 [CLP]

Flammable solids, Category 2	H228
Acute toxicity (oral), Category 4	H302
Carcinogenicity, Category 2	H351
Hazardous to the aquatic environment – Acute Hazard, Category 1	H400
Hazardous to the aquatic environment – Chronic Hazard, Category 1	H410

Full text of H- and EUH-statements: see section 16

#### Adverse physicochemical, human health and environmental effects

Suspected of causing cancer. Harmful if swallowed. Very toxic to aquatic life with long lasting effects.

# NAPHTHALENE AR

## Safety Data Sheet

according to the REACH Regulation (EC) 1907/2006 amended by Regulation (EU) 2020/878

### 2.2. Label elements

#### Labelling according to Regulation (EC) No. 1272/2008 [CLP]

Hazard pictograms (CLP) :



GHS02

GHS07

GHS08

GHS09

Signal word (CLP) :

Warning

Hazard statements (CLP) :

H228 - Flammable solid.

H302 - Harmful if swallowed.

H351 - Suspected of causing cancer.

H410 - Very toxic to aquatic life with long lasting effects.

Precautionary statements (CLP) :

P202 - Do not handle until all safety precautions have been read and understood.

P210 - Keep away from heat, hot surfaces, sparks, open flames and other ignition sources.

No smoking.

P240 - Ground and bond container and receiving equipment.

P273 - Avoid release to the environment.

P301+P312 - IF SWALLOWED: Call a POISON CENTRE or doctor if you feel unwell.

P308+P313 - IF exposed or concerned: Get medical advice/attention.

### 2.3. Other hazards

Contains no PBT and/or vPvB substances  $\geq 0.1\%$  assessed in accordance with REACH Annex XIII

## SECTION 3: Composition/information on ingredients

### 3.1. Substances

Substance type : Mono-constituent

Name	Product identifier	%
NAPHTHALENE	CAS-No.: 91-20-3 EC-No.: 202-049-5 EC Index-No.: 601-052-00-2	100

### 3.2. Mixtures

Not applicable

## SECTION 4: First aid measures

### 4.1. Description of first aid measures

First-aid measures general	: Suspected of causing cancer. IF exposed or concerned: Get medical advice/attention. Call a poison center or a doctor if you feel unwell.
First-aid measures after inhalation	: Remove person to fresh air and keep comfortable for breathing. If you feel unwell, seek medical advice.
First-aid measures after skin contact	: Gently wash with plenty of soap and water. If skin irritation occurs: Get medical advice/attention. Wash skin with plenty of water.
First-aid measures after eye contact	: Remove contact lenses, if present and easy to do. Continue rinsing. Rinse cautiously with water for several minutes. If eye irritation persists: Get medical advice/attention.
First-aid measures after ingestion	: Rinse mouth. Call a POISON CENTER/doctor if you feel unwell. Call a poison center or a doctor if you feel unwell.

### 4.2. Most important symptoms and effects, both acute and delayed

Symptoms/effects after inhalation	: Dust of the product, if present, may cause respiratory irritation after an excessive inhalation exposure. Although no appropriate human or animal health effects data are known to exist, this material is expected to be an inhalation hazard.
-----------------------------------	---

# NAPHTHALENE AR

## Safety Data Sheet

according to the REACH Regulation (EC) 1907/2006 amended by Regulation (EU) 2020/878

Symptoms/effects after skin contact	: None under normal conditions. Dust may cause irritation in skin folds or by contact in combination with tight clothing.
Symptoms/effects after eye contact	: None under normal conditions. Dust from this product may cause eye irritation.
Symptoms/effects after ingestion	: Harmful if swallowed.
Chronic symptoms	: Suspected carcinogen.

### 4.3. Indication of any immediate medical attention and special treatment needed

Treat symptomatically.

## SECTION 5: Firefighting measures

### 5.1. Extinguishing media

Suitable extinguishing media	: dry chemical powder, alcohol-resistant foam, carbon dioxide (CO <sub>2</sub> ). Water spray. Dry powder. Foam.
Unsuitable extinguishing media	: Do not use a heavy water stream.

### 5.2. Special hazards arising from the substance or mixture

Fire hazard	: Flammable solid.
Explosion hazard	: No direct explosion hazard.
Hazardous decomposition products in case of fire	: Toxic fumes may be released.

### 5.3. Advice for firefighters

Firefighting instructions	: Fight fire from safe distance and protected location. Do not enter fire area without proper protective equipment, including respiratory protection.
Protection during firefighting	: Do not attempt to take action without suitable protective equipment. Self-contained breathing apparatus. Complete protective clothing.

## SECTION 6: Accidental release measures

### 6.1. Personal precautions, protective equipment and emergency procedures

General measures	: Notify authorities if product enters sewers or public waters. Absorb spillage to prevent material damage.
------------------	---

#### 6.1.1. For non-emergency personnel

Protective equipment	: Wear recommended personal protective equipment.
Emergency procedures	: Ventilate spillage area. Evacuate unnecessary personnel.

#### 6.1.2. For emergency responders

Protective equipment	: Do not attempt to take action without suitable protective equipment. Use personal protective equipment as required. For further information refer to section 8: "Exposure controls/personal protection".
Emergency procedures	: Ventilate area. Evacuate unnecessary personnel.

### 6.2. Environmental precautions

Avoid release to the environment. Very toxic to aquatic life with long lasting effects.

### 6.3. Methods and material for containment and cleaning up

For containment	: Collect spillage.
Methods for cleaning up	: Mechanically recover the product. Notify authorities if product enters sewers or public waters.
Other information	: Dispose of materials or solid residues at an authorized site.

### 6.4. Reference to other sections

For further information refer to section 13.

# NAPHTHALENE AR

## Safety Data Sheet

according to the REACH Regulation (EC) 1907/2006 amended by Regulation (EU) 2020/878

### SECTION 7: Handling and storage

#### 7.1. Precautions for safe handling

Additional hazards when processed	: Not expected to present a significant hazard under anticipated conditions of normal use.
Precautions for safe handling	: Ensure good ventilation of the work station. Obtain special instructions before use. Do not handle until all safety precautions have been read and understood. Wear personal protective equipment.
Hygiene measures	: Do not eat, drink or smoke when using this product. Wash hands, forearms and face thoroughly after handling. Always wash hands after handling the product.

#### 7.2. Conditions for safe storage, including any incompatibilities

Technical measures	: Keep in a cool, well-ventilated place away from heat.
Storage conditions	: Keep container tightly closed. Store in a dry place. Protect from moisture. Store locked up.
Packaging materials	: Store always product in container of same material as original container.

#### 7.3. Specific end use(s)

No additional information available

### SECTION 8: Exposure controls/personal protection

#### 8.1. Control parameters

##### 8.1.1 National occupational exposure and biological limit values

No additional information available

##### 8.1.2. Recommended monitoring procedures

No additional information available

##### 8.1.3. Air contaminants formed

No additional information available

##### 8.1.4. DNEL and PNEC

No additional information available

##### 8.1.5. Control banding

No additional information available

#### 8.2. Exposure controls

##### 8.2.1. Appropriate engineering controls

###### Appropriate engineering controls:

Ensure good ventilation of the work station.

##### 8.2.2. Personal protection equipment

###### Personal protective equipment:

Wear recommended personal protective equipment.

###### Personal protective equipment symbol(s):



###### 8.2.2.1. Eye and face protection

###### Eye protection:

Chemical goggles or safety glasses

###### 8.2.2.2. Skin protection

###### Skin and body protection:

Wear a mask

# NAPHTHALENE AR

## Safety Data Sheet

according to the REACH Regulation (EC) 1907/2006 amended by Regulation (EU) 2020/878

### Hand protection:

Protective gloves

### 8.2.2.3. Respiratory protection

#### Respiratory protection:

Wear appropriate mask

### 8.2.2.4. Thermal hazards

No additional information available

### 8.2.3. Environmental exposure controls

#### Environmental exposure controls:

Avoid release to the environment.

## SECTION 9: Physical and chemical properties

### 9.1. Information on basic physical and chemical properties

Physical state	: Solid
Colour	: White.
Appearance	: Scales.
Molecular mass	: 128.17 g/mol
Odour	: strong coal-tar odour.
Odour threshold	: Not available
Melting point	: 79.5 – 81 °C
Freezing point	: Not applicable
Boiling point	: 218 °C
Flammability	: Non flammable.
Lower explosion limit	: 0.9 vol %
Upper explosion limit	: 5.9 vol %
Flash point	: 80 °C
Auto-ignition temperature	: 525 °C
Decomposition temperature	: 540 °C
pH	: Not available
pH solution	: Not available
Viscosity, kinematic	: Not applicable
Solubility	: Water: 31.6 mg/l at 25 °C - Insoluble in water Ethanol: Soluble
Partition coefficient n-octanol/water (Log Kow)	: Not available
Partition coefficient n-octanol/water (Log Pow)	: 3.3
Vapour pressure	: 0.05 mm Hg at 20 °C
Vapour pressure at 50°C	: Not available
Density	: 1.16 g/cm <sup>3</sup> at 20 °C
Relative density	: 1.162 at 20 °C/4 °C
Relative vapour density at 20°C	: 4.4 (Air = 1)
Particle size	: Not available

### 9.2. Other information

#### 9.2.1. Information with regard to physical hazard classes

No additional information available

#### 9.2.2. Other safety characteristics

No additional information available

## SECTION 10: Stability and reactivity

### 10.1. Reactivity

The product is non-reactive under normal conditions of use, storage and transport.

# NAPHTHALENE AR

## Safety Data Sheet

according to the REACH Regulation (EC) 1907/2006 amended by Regulation (EU) 2020/878

### 10.2. Chemical stability

Flammable liquid and vapour. Stable under normal conditions of use.

### 10.3. Possibility of hazardous reactions

No dangerous reactions known under normal conditions of use.

### 10.4. Conditions to avoid

Direct sunlight. Air contact. Moisture.

### 10.5. Incompatible materials

No additional information available

### 10.6. Hazardous decomposition products

Under normal conditions of storage and use, hazardous decomposition products should not be produced.

## SECTION 11: Toxicological information

### 11.1. Information on hazard classes as defined in Regulation (EC) No 1272/2008

Acute toxicity (oral)	: Harmful if swallowed.
Acute toxicity (dermal)	: Not classified
Acute toxicity (inhalation)	: Not classified
Skin corrosion/irritation	: Not classified
Serious eye damage/irritation	: Not classified
Respiratory or skin sensitisation	: Not classified
Germ cell mutagenicity	: Not classified
Carcinogenicity	: Suspected of causing cancer.
Reproductive toxicity	: Not classified
STOT-single exposure	: Not classified
STOT-repeated exposure	: Not classified
Aspiration hazard	: Not classified

### NAPHTHALENE AR (91-20-3)

Viscosity, kinematic	Not applicable
----------------------	----------------

### 11.2. Information on other hazards

#### 11.2.1. Endocrine disrupting properties

No additional information available

#### 11.2.2. Other information

Potential adverse human health effects and symptoms : Harmful if swallowed.

## SECTION 12: Ecological information

### 12.1. Toxicity

Ecology - general	: Very toxic to aquatic life with long lasting effects.
Ecology - water	: Very toxic to aquatic life with long lasting effects.
Hazardous to the aquatic environment, short-term (acute)	: Very toxic to aquatic life.
Hazardous to the aquatic environment, long-term (chronic)	: Very toxic to aquatic life with long lasting effects.

# NAPHTHALENE AR

## Safety Data Sheet

according to the REACH Regulation (EC) 1907/2006 amended by Regulation (EU) 2020/878

### 12.2. Persistence and degradability

#### NAPHTHALENE AR (91-20-3)

Persistence and degradability	Rapidly degradable
-------------------------------	--------------------

### 12.3. Bioaccumulative potential

No additional information available

### 12.4. Mobility in soil

No additional information available

### 12.5. Results of PBT and vPvB assessment

No additional information available

### 12.6. Endocrine disrupting properties

No additional information available

### 12.7. Other adverse effects

No additional information available

## SECTION 13: Disposal considerations

### 13.1. Waste treatment methods

Regional waste regulation	: Disposal must be done according to official regulations.
Waste treatment methods	: Dispose of contents/container in accordance with licensed collector's sorting instructions.
Sewage disposal recommendations	: Disposal must be done according to official regulations.
Product/Packaging disposal recommendations	: Dispose of contents/container to hazardous or special waste collection point, in accordance with local, regional, national and/or international regulation. Disposal must be done according to official regulations.
Additional information	: Do not re-use empty containers.

## SECTION 14: Transport information

In accordance with ADR / IMDG / IATA / ADN / RID

### 14.1. UN number or ID number

UN-No. (ADR)	: UN 1334
UN-No. (IMDG)	: UN 1334
UN-No. (IATA)	: UN 1334
UN-No. (ADN)	: UN 1334
UN-No. (RID)	: UN 1334

### 14.2. UN proper shipping name

Proper Shipping Name (ADR)	: NAPHTHALENE, REFINED
Proper Shipping Name (IMDG)	: NAPHTHALENE, REFINED
Proper Shipping Name (IATA)	: Naphthalene, refined
Proper Shipping Name (ADN)	: NAPHTHALENE, REFINED
Proper Shipping Name (RID)	: NAPHTHALENE, REFINED
Transport document description (ADR)	: UN 1334 NAPHTHALENE, REFINED, 4.1, III, (E)
Transport document description (IMDG)	: UN 1334 NAPHTHALENE, REFINED, 4.1, III, MARINE POLLUTANT/ENVIRONMENTALLY HAZARDOUS
Transport document description (IATA)	: UN 1334 Naphthalene, refined, 4.1, III, ENVIRONMENTALLY HAZARDOUS
Transport document description (ADN)	: UN 1334 NAPHTHALENE, REFINED, 4.1, III, ENVIRONMENTALLY HAZARDOUS
Transport document description (RID)	: UN 1334 NAPHTHALENE, REFINED, 4.1, III, ENVIRONMENTALLY HAZARDOUS

# NAPHTHALENE AR

## Safety Data Sheet

according to the REACH Regulation (EC) 1907/2006 amended by Regulation (EU) 2020/878

### 14.3. Transport hazard class(es)

#### ADR

Transport hazard class(es) (ADR) : 4.1  
Danger labels (ADR) : 4.1



#### IMDG

Transport hazard class(es) (IMDG) : 4.1  
Danger labels (IMDG) : 4.1



#### IATA

Transport hazard class(es) (IATA) : 4.1  
Danger labels (IATA) : 4.1



#### ADN

Transport hazard class(es) (ADN) : 4.1  
Danger labels (ADN) : 4.1



#### RID

Transport hazard class(es) (RID) : 4.1  
Danger labels (RID) : 4.1



### 14.4. Packing group

Packing group (ADR) : III  
Packing group (IMDG) : III  
Packing group (IATA) : III  
Packing group (ADN) : III  
Packing group (RID) : III

### 14.5. Environmental hazards

Dangerous for the environment : Yes  
Marine pollutant : Yes  
Other information : No supplementary information available

### 14.6. Special precautions for user

#### Overland transport

Classification code (ADR) : F1  
Special provisions (ADR) : 501

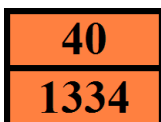


# NAPHTHALENE AR

## Safety Data Sheet

according to the REACH Regulation (EC) 1907/2006 amended by Regulation (EU) 2020/878

Limited quantities (ADR)	: 5kg
Excepted quantities (ADR)	: E1
Packing instructions (ADR)	: P002, IBC08, LP02, R001
Special packing provisions (ADR)	: B3
Mixed packing provisions (ADR)	: MP10
Portable tank and bulk container instructions (ADR)	: T1, BK1, BK2, BK3
Portable tank and bulk container special provisions (ADR)	: TP33
Tank code (ADR)	: SGAV
Vehicle for tank carriage	: AT
Transport category (ADR)	: 3
Special provisions for carriage - Bulk (ADR)	: VC1, VC2, AP1
Hazard identification number (Kemler No.)	: 40
Orange plates	:



Tunnel restriction code (ADR)	: E
EAC code	: 1Z

### Transport by sea

Special provisions (IMDG)	: 948, 967
Limited quantities (IMDG)	: 5 kg
Excepted quantities (IMDG)	: E1
Packing instructions (IMDG)	: P002, LP02
IBC packing instructions (IMDG)	: IBC08
IBC special provisions (IMDG)	: B3
Tank instructions (IMDG)	: T1, BK2, BK3
Tank special provisions (IMDG)	: TP33
EmS-No. (Fire)	: F-A
EmS-No. (Spillage)	: S-G
Stowage category (IMDG)	: A
Stowage and handling (IMDG)	: SW23
Properties and observations (IMDG)	: Crystalline flakes or powder with a persistent odour. Evolves flammable vapours at, or below, its melting point.
MFAG-No	: 133

### Air transport

PCA Excepted quantities (IATA)	: E1
PCA Limited quantities (IATA)	: Y443
PCA limited quantity max net quantity (IATA)	: 10kg
PCA packing instructions (IATA)	: 446
PCA max net quantity (IATA)	: 25kg
CAO packing instructions (IATA)	: 449
CAO max net quantity (IATA)	: 100kg
Special provisions (IATA)	: A803
ERG code (IATA)	: 3L

### Inland waterway transport

Classification code (ADN)	: F1
Special provisions (ADN)	: 501
Limited quantities (ADN)	: 5 kg
Excepted quantities (ADN)	: E1
Carriage permitted (ADN)	: B
Equipment required (ADN)	: PP
Provisions for carriage in bulk (ADN)	: CO01
Number of blue cones/lights (ADN)	: 0

### Rail transport

Classification code (RID)	: F1
Special provisions (RID)	: 501
Limited quantities (RID)	: 5kg

# NAPHTHALENE AR

## Safety Data Sheet

according to the REACH Regulation (EC) 1907/2006 amended by Regulation (EU) 2020/878

Excepted quantities (RID)	: E1
Packing instructions (RID)	: P002, IBC08, LP02, R001
Special packing provisions (RID)	: B3
Mixed packing provisions (RID)	: MP10
Portable tank and bulk container instructions (RID)	: T1, BK1, BK2, BK3
Portable tank and bulk container special provisions (RID)	: TP33
Tank codes for RID tanks (RID)	: SGAV
Transport category (RID)	: 3
Special provisions for carriage – Packages (RID)	: W1
Special provisions for carriage – Bulk (RID)	: VC1, VC2, AP1
Colis express (express parcels) (RID)	: CE11
Hazard identification number (RID)	: 40

### 14.7. Maritime transport in bulk according to IMO instruments

Not applicable

## SECTION 15: Regulatory information

### 15.1. Safety, health and environmental regulations/legislation specific for the substance or mixture

#### 15.1.1. EU-Regulations

##### REACH Annex XVII (Restriction List)

Not listed on REACH Annex XVII

##### REACH Annex XIV (Authorisation List)

Not listed on REACH Annex XIV (Authorisation List)

##### REACH Candidate List (SVHC)

Not listed on the REACH Candidate List

##### PIC Regulation (Prior Informed Consent)

Not listed on the PIC list (Regulation EU 649/2012)

##### POP Regulation (Persistent Organic Pollutants)

Not listed on the POP list (Regulation EU 2019/1021)

##### Ozone Regulation (1005/2009)

Not listed on the Ozone Depletion list (Regulation EU 1005/2009)

##### Dual-Use Regulation (428/2009)

Contains no substance subject to the COUNCIL REGULATION (EC) No 428/2009 of 5 May 2009 setting up a Community regime for the control of exports, transfer, brokering and transit of dual-use items.

##### Explosives Precursors Regulation (2019/1148)

Contains no substance(s) listed on the Explosives Precursors list (Regulation EU 2019/1148 on the marketing and use of explosives precursors)

##### Drug Precursors Regulation (273/2004)

Contains no substance(s) listed on the Drug Precursors list (Regulation EC 273/2004 on the manufacture and the placing on market of certain substances used in the illicit manufacture of narcotic drugs and psychotropic substances)

#### 15.1.2. National regulations

##### Germany

Water hazard class (WGK)	: WGK 3, Highly hazardous to water (Classification according to AwSV; ID No. 269).
Hazardous Incident Ordinance (12. BImSchV)	: Is not subject of the Hazardous Incident Ordinance (12. BImSchV)

##### Netherlands

SZW-lijst van kankerverwekkende stoffen	: The substance is not listed
SZW-lijst van mutagene stoffen	: The substance is not listed
SZW-lijst van reprotoxische stoffen – Borstvoeding	: The substance is not listed
SZW-lijst van reprotoxische stoffen – Vruchtbaarheid	: The substance is not listed

# NAPHTHALENE AR

## Safety Data Sheet

according to the REACH Regulation (EC) 1907/2006 amended by Regulation (EU) 2020/878

SZW-lijst van reprotoxische stoffen – Ontwikkeling : The substance is not listed

### Denmark

Class for fire hazard : Class III-1  
Store unit : 50 liter  
Classification remarks : Flammable according to the Danish Ministry of Justice; Emergency management guidelines for the storage of flammable liquids must be followed  
Danish National Regulations : Young people below the age of 18 years are not allowed to use the product  
Pregnant/breastfeeding women working with the product must not be in direct contact with the product

## 15.2. Chemical safety assessment

No chemical safety assessment has been carried out

## SECTION 16: Other information

### Abbreviations and acronyms:

ADN	European Agreement concerning the International Carriage of Dangerous Goods by Inland Waterways
ADR	European Agreement concerning the International Carriage of Dangerous Goods by Road
ATE	Acute Toxicity Estimate
BCF	Bioconcentration factor
BLV	Biological limit value
BOD	Biochemical oxygen demand (BOD)
COD	Chemical oxygen demand (COD)
DMEL	Derived Minimal Effect level
DNEL	Derived-No Effect Level
EC-No.	European Community number
EC50	Median effective concentration
EN	European Standard
IARC	International Agency for Research on Cancer
IATA	International Air Transport Association
IMDG	International Maritime Dangerous Goods
LC50	Median lethal concentration
LD50	Median lethal dose
LOAEL	Lowest Observed Adverse Effect Level
NOAEC	No-Observed Adverse Effect Concentration
NOAEL	No-Observed Adverse Effect Level
NOEC	No-Observed Effect Concentration
OECD	Organisation for Economic Co-operation and Development
OEL	Occupational Exposure Limit
PBT	Persistent Bioaccumulative Toxic
PNEC	Predicted No-Effect Concentration
RID	Regulations concerning the International Carriage of Dangerous Goods by Rail
SDS	Safety Data Sheet
STP	Sewage treatment plant

# NAPHTHALENE AR

## Safety Data Sheet

according to the REACH Regulation (EC) 1907/2006 amended by Regulation (EU) 2020/878

### Abbreviations and acronyms:

ThOD	Theoretical oxygen demand (ThOD)
TLM	Median Tolerance Limit
VOC	Volatile Organic Compounds
CAS-No.	Chemical Abstract Service number
N.O.S.	Not Otherwise Specified
vPvB	Very Persistent and Very Bioaccumulative
ED	Endocrine disrupting properties

### Full text of H- and EUH-statements:

Acute Tox. 4 (Oral)	Acute toxicity (oral), Category 4
Aquatic Acute 1	Hazardous to the aquatic environment – Acute Hazard, Category 1
Aquatic Chronic 1	Hazardous to the aquatic environment – Chronic Hazard, Category 1
Carc. 2	Carcinogenicity, Category 2
Flam. Sol. 2	Flammable solids, Category 2
H228	Flammable solid.
H302	Harmful if swallowed.
H351	Suspected of causing cancer.
H400	Very toxic to aquatic life.
H410	Very toxic to aquatic life with long lasting effects.

Safety Data Sheet (SDS), EU

This information is based on our current knowledge and is intended to describe the product for the purposes of health, safety and environmental requirements only. It should not therefore be construed as guaranteeing any specific property of the product.