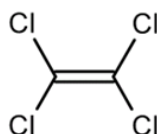


SECTION 1: Identification of the substance/mixture and of the company/undertaking

1.1. Product identifier

Product form : Substance
Trade name : TETRACHLOROETHYLENE GC-HS
EC Index-No. : 602-028-00-4
EC-No. : 204-825-9
CAS-No. : 127-18-4
Product code : 0301F
Type of product : Organic compound
Formula : C₂Cl₄
Chemical structure :



Synonyms : Carbon bichloride; Carbon dichloride, Ethylene tetrachloride, Perchlor, Perchloroethene, / Perchloroethylene

1.2. Relevant identified uses of the substance or mixture and uses advised against

Relevant identified uses

Use of the substance/mixture : Solvents
Laboratory chemicals
Manufacture of substances

1.3. Details of the supplier of the safety data sheet

LOBA CHEMIE PVT.LTD.
107 Wode House Road, Jehangir Villa, Colaba
400005 Mumbai
INDIA
T +91 22 6663 6663, F +91 22 6663 6699
info@lobachemie.com, www.lobachemie.com

1.4. Emergency telephone number

Emergency number : + 91 22 6663 6663 (9:00am - 6:00 pm)

SECTION 2: Hazards identification

2.1. Classification of the substance or mixture

Classification according to Regulation (EC) No. 1272/2008 [CLP]

Skin corrosion/irritation, Category 2 H315
Carcinogenicity, Category 2 H351
Hazardous to the aquatic environment – Chronic Hazard, Category 2 H411

Full text of H- and EUH-statements: see section 16

Adverse physicochemical, human health and environmental effects

Suspected of causing cancer. Causes skin irritation. Toxic to aquatic life with long lasting effects.

TETRACHLOROETHYLENE GC-HS

Safety Data Sheet

according to the REACH Regulation (EC) 1907/2006 amended by Regulation (EU) 2020/878

2.2. Label elements

Labelling according to Regulation (EC) No. 1272/2008 [CLP]

Hazard pictograms (CLP)



Signal word (CLP)

Hazard statements (CLP)

Precautionary statements (CLP)

- : Warning
- : H315 - Causes skin irritation.
- : H351 - Suspected of causing cancer.
- : H411 - Toxic to aquatic life with long lasting effects.
- : P202 - Do not handle until all safety precautions have been read and understood.
- : P273 - Avoid release to the environment.
- : P280 - Wear protective gloves, protective clothing, eye protection, face protection.
- : P302+P352 - IF ON SKIN: Wash with plenty of water.
- : P308+P313 - IF exposed or concerned: Get medical advice/attention.

2.3. Other hazards

No additional information available

SECTION 3: Composition/information on ingredients

3.1. Substances

Substance type : Mono-constituent

Name	Product identifier	%
TETRACHLOROETHYLENE	CAS-No.: 127-18-4 EC-No.: 204-825-9 EC Index-No.: 602-028-00-4	100

SECTION 4: First aid measures

4.1. Description of first aid measures

- First-aid measures general : IF exposed or concerned: Get medical advice/attention.
- First-aid measures after inhalation : Remove person to fresh air and keep comfortable for breathing.
- First-aid measures after skin contact : Wash skin with plenty of water. Take off contaminated clothing. If skin irritation occurs: Get medical advice/attention.
- First-aid measures after eye contact : Rinse eyes with water as a precaution.
- First-aid measures after ingestion : Call a poison center or a doctor if you feel unwell.
- First-aid measures for first aider : First aid workers will be equipped with suitable personal protective equipment.

4.2. Most important symptoms and effects, both acute and delayed

- Symptoms/effects after inhalation : None under normal conditions.
- Symptoms/effects after skin contact : Irritation.
- Symptoms/effects after eye contact : None under normal conditions.
- Symptoms/effects after ingestion : None under normal conditions.

4.3. Indication of any immediate medical attention and special treatment needed

Treat symptomatically.

TETRACHLOROETHYLENE GC-HS

Safety Data Sheet

according to the REACH Regulation (EC) 1907/2006 amended by Regulation (EU) 2020/878

SECTION 5: Firefighting measures

5.1. Extinguishing media

Suitable extinguishing media : Water spray. Dry powder. Foam. Carbon dioxide.
Unsuitable extinguishing media : Do not use a heavy water stream.

5.2. Special hazards arising from the substance or mixture

Fire hazard : No fire hazard.
Explosion hazard : No direct explosion hazard.
Hazardous decomposition products in case of fire : Toxic fumes may be released.

5.3. Advice for firefighters

Firefighting instructions : Fight fire from safe distance and protected location. Do not enter fire area without proper protective equipment, including respiratory protection.
Protection during firefighting : Do not attempt to take action without suitable protective equipment. Self-contained breathing apparatus. Complete protective clothing.

SECTION 6: Accidental release measures

6.1. Personal precautions, protective equipment and emergency procedures

General measures : Stop leak if safe to do so. Notify authorities if product enters sewers or public waters.
Absorb spillage to prevent material damage.

For non-emergency personnel

Protective equipment : Wear recommended personal protective equipment.
Emergency procedures : Ventilate spillage area. Avoid contact with skin and eyes.

For emergency responders

Protective equipment : Do not attempt to take action without suitable protective equipment. For further information refer to section 8: "Exposure controls/personal protection".
Emergency procedures : Evacuate unnecessary personnel. Stop leak if safe to do so.

6.2. Environmental precautions

Avoid release to the environment.

6.3. Methods and material for containment and cleaning up

For containment : Collect spillage. Contain any spills with dikes or absorbents to prevent migration and entry into sewers or streams. Stop leak without risks if possible.
Methods for cleaning up : Take up liquid spill into absorbent material. Notify authorities if product enters sewers or public waters.
Other information : Dispose of materials or solid residues at an authorized site.

6.4. Reference to other sections

For further information refer to section 13.

SECTION 7: Handling and storage

7.1. Precautions for safe handling

Additional hazards when processed : Not expected to present a significant hazard under anticipated conditions of normal use.
Precautions for safe handling : Ensure good ventilation of the work station. Obtain special instructions before use. Do not handle until all safety precautions have been read and understood. Wear personal protective equipment. Avoid contact with skin and eyes.
Hygiene measures : Wash contaminated clothing before reuse. Do not eat, drink or smoke when using this product. Always wash hands after handling the product.

TETRACHLOROETHYLENE GC-HS

Safety Data Sheet

according to the REACH Regulation (EC) 1907/2006 amended by Regulation (EU) 2020/878

7.2. Conditions for safe storage, including any incompatibilities

Technical measures	: Keep in a cool, well-ventilated place away from heat.
Storage conditions	: Store locked up.
Packaging materials	: Store always product in container of same material as original container.

Switzerland

Storage class (LK)	: LK 6.1 - Toxic materials
--------------------	----------------------------

7.3. Specific end use(s)

No additional information available

SECTION 8: Exposure controls/personal protection

8.1. Control parameters

No additional information available

8.2. Exposure controls

Appropriate engineering controls

Appropriate engineering controls:

Ensure good ventilation of the work station.

Personal protective equipment

Personal protective equipment:

Wear recommended personal protective equipment.

Personal protective equipment symbol(s):



Eye and face protection

Eye protection:

Chemical goggles or safety glasses

Skin protection

Skin and body protection:

Wear a mask

Hand protection:

Protective gloves

Respiratory protection

Respiratory protection:

Wear appropriate mask

Environmental exposure controls

Environmental exposure controls:

Avoid release to the environment.

SECTION 9: Physical and chemical properties

9.1. Information on basic physical and chemical properties

Physical state	: Liquid
Colour	: Colourless.
Appearance	: Clear liquid.
Molecular mass	: 165.85 g/mol
Odour	: mild, ethereal odor.
Odour threshold	: Not available

TETRACHLOROETHYLENE GC-HS

Safety Data Sheet

according to the REACH Regulation (EC) 1907/2006 amended by Regulation (EU) 2020/878

Melting point	: Not applicable
Freezing point	: -22 °C
Boiling point	: 121 °C
Flammability	: Non flammable.
Lower explosion limit	: Not available
Upper explosion limit	: Not available
Flash point	: Not available
Auto-ignition temperature	: Not available
Decomposition temperature	: > 150 °C
pH	: Not available
Viscosity, kinematic	: 0.548 mm ² /s
Viscosity, dynamic	: 0.89 cP at 25 °C
Solubility	: Water: 0.015 g/100ml - Immiscible with water Ethanol: Miscible with ethanol Ether: Miscible with ether
Partition coefficient n-octanol/water (Log Kow)	: Not available
Partition coefficient n-octanol/water (Log Pow)	: 3.4
Vapour pressure	: 14 mm Hg at 20 °C
Vapour pressure at 50°C	: Not available
Density	: 1.623 g/cm ³ at 20 °C
Relative density	: Not available
Relative vapour density at 20°C	: 5.83 (Air = 1)
Particle characteristics	: Not applicable

9.2. Other information

Other safety characteristics

Relative evaporation rate (butylacetate=1)	: 0.33
Refractive index	: 1.5053 at 20 °C/D

SECTION 10: Stability and reactivity

10.1. Reactivity

The product is non-reactive under normal conditions of use, storage and transport.

10.2. Chemical stability

Stable under normal conditions.

10.3. Possibility of hazardous reactions

No dangerous reactions known under normal conditions of use.

10.4. Conditions to avoid

None under recommended storage and handling conditions (see section 7).

10.5. Incompatible materials

No additional information available

10.6. Hazardous decomposition products

Under normal conditions of storage and use, hazardous decomposition products should not be produced.

SECTION 11: Toxicological information

11.1. Information on hazard classes as defined in Regulation (EC) No 1272/2008

Acute toxicity (oral)	: Not classified
Acute toxicity (dermal)	: Not classified
Acute toxicity (inhalation)	: Not classified
Skin corrosion/irritation	: Causes skin irritation.

TETRACHLOROETHYLENE GC-HS

Safety Data Sheet

according to the REACH Regulation (EC) 1907/2006 amended by Regulation (EU) 2020/878

Serious eye damage/irritation	: Not classified
Respiratory or skin sensitisation	: Not classified
Germ cell mutagenicity	: Not classified
Carcinogenicity	: Suspected of causing cancer.
Reproductive toxicity	: Not classified
STOT-single exposure	: Not classified
STOT-repeated exposure	: Not classified
Aspiration hazard	: Not classified

TETRACHLOROETHYLENE GC-HS (127-18-4)

Viscosity, kinematic	0.548 mm ² /s
----------------------	--------------------------

11.2. Information on other hazards

No additional information available

SECTION 12: Ecological information

12.1. Toxicity

Ecology - general	: Toxic to aquatic life with long lasting effects.
Hazardous to the aquatic environment, short-term (acute)	: Not classified
Hazardous to the aquatic environment, long-term (chronic)	: Toxic to aquatic life with long lasting effects.

12.2. Persistence and degradability

TETRACHLOROETHYLENE GC-HS (127-18-4)

Persistence and degradability	Rapidly degradable
-------------------------------	--------------------

12.3. Bioaccumulative potential

TETRACHLOROETHYLENE GC-HS (127-18-4)

Partition coefficient n-octanol/water (Log Pow)	3.4
---	-----

12.4. Mobility in soil

No additional information available

12.5. Results of PBT and vPvB assessment

No additional information available

12.6. Endocrine disrupting properties

No additional information available

12.7. Other adverse effects

No additional information available

SECTION 13: Disposal considerations

13.1. Waste treatment methods

Regional waste regulation	: Disposal must be done according to official regulations.
Waste treatment methods	: Dispose of contents/container in accordance with licensed collector's sorting instructions.
Sewage disposal recommendations	: Disposal must be done according to official regulations.
Product/Packaging disposal recommendations	: Disposal must be done according to official regulations.
Additional information	: Do not re-use empty containers.

TETRACHLOROETHYLENE GC-HS

Safety Data Sheet

according to the REACH Regulation (EC) 1907/2006 amended by Regulation (EU) 2020/878

SECTION 14: Transport information

In accordance with ADR / IMDG / IATA / ADN / RID

14.1. UN number or ID number

UN-No. (ADR) : UN 1897
UN-No. (IMDG) : UN 1897
UN-No. (IATA) : UN 1897
UN-No. (ADN) : UN 1897
UN-No. (RID) : UN 1897

14.2. UN proper shipping name

Proper Shipping Name (ADR) : TETRACHLOROETHYLENE
Proper Shipping Name (IMDG) : TETRACHLOROETHYLENE
Proper Shipping Name (IATA) : Tetrachloroethylene
Proper Shipping Name (ADN) : TETRACHLOROETHYLENE
Proper Shipping Name (RID) : TETRACHLOROETHYLENE
Transport document description (ADR) (ADR) : UN 1897 TETRACHLOROETHYLENE, 6.1, III, (E), ENVIRONMENTALLY HAZARDOUS
Transport document description (IMDG) : UN 1897 TETRACHLOROETHYLENE, 6.1, III, MARINE POLLUTANT/ENVIRONMENTALLY HAZARDOUS
Transport document description (IATA) : UN 1897 Tetrachloroethylene, 6.1, III, ENVIRONMENTALLY HAZARDOUS
Transport document description (ADN) : UN 1897 TETRACHLOROETHYLENE, 6.1, III, ENVIRONMENTALLY HAZARDOUS
Transport document description (RID) : UN 1897 TETRACHLOROETHYLENE, 6.1, III, ENVIRONMENTALLY HAZARDOUS

14.3. Transport hazard class(es)

ADR

Transport hazard class(es) (ADR) : 6.1
Danger labels (ADR) : 6.1



IMDG

Transport hazard class(es) (IMDG) : 6.1
Danger labels (IMDG) : 6.1



IATA

Transport hazard class(es) (IATA) : 6.1
Danger labels (IATA) : 6.1



ADN

Transport hazard class(es) (ADN) : 6.1
Danger labels (ADN) : 6.1



TETRACHLOROETHYLENE GC-HS

Safety Data Sheet

according to the REACH Regulation (EC) 1907/2006 amended by Regulation (EU) 2020/878

RID

Transport hazard class(es) (RID) : 6.1
Danger labels (RID) : 6.1



14.4. Packing group

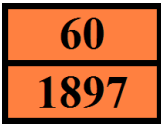
Packing group (ADR) : III
Packing group (IMDG) : III
Packing group (IATA) : III
Packing group (ADN) : III
Packing group (RID) : III

14.5. Environmental hazards

Dangerous for the environment : Yes
Marine pollutant : Yes
EmS-No. (Fire) : F-A
EmS-No. (Spillage) : S-A
Other information : No supplementary information available

14.6. Special precautions for user

Overland transport

Classification code (ADR) : T1
Limited quantities (ADR) : 5I
Excepted quantities (ADR) : E1
Packing instructions (ADR) : P001, IBC03, LP01, R001
Mixed packing provisions (ADR) : MP19
Portable tank and bulk container instructions (ADR) : T4
Portable tank and bulk container special provisions (ADR) : TP1
Tank code (ADR) : L4BH
Tank special provisions (ADR) : TU15, TE19
Vehicle for tank carriage : AT
Transport category (ADR) : 2
Special provisions for carriage - Packages (ADR) : V12
Special provisions for carriage - Loading, unloading and handling (ADR) : CV13, CV28
Special provisions for carriage - Operation (ADR) : S9
Hazard identification number (Kemler No.) : 60
Orange plates : 
Tunnel restriction code (ADR) : E
EAC code : 2Z

Transport by sea

Limited quantities (IMDG) : 5 L
Excepted quantities (IMDG) : E1
Packing instructions (IMDG) : P001, LP01
IBC packing instructions (IMDG) : IBC03
Tank instructions (IMDG) : T4
Tank special provisions (IMDG) : TP1
Stowage category (IMDG) : A
Stowage and handling (IMDG) : SW2
Segregation (IMDG) : SGG10
Properties and observations (IMDG) : Colourless liquid with an ethereal odour. When involved in a fire, evolves extremely toxic fumes (phosgene). Toxic if swallowed, by skin contact or by inhalation.

TETRACHLOROETHYLENE GC-HS

Safety Data Sheet

according to the REACH Regulation (EC) 1907/2006 amended by Regulation (EU) 2020/878

Air transport

PCA Excepted quantities (IATA)	: E1
PCA Limited quantities (IATA)	: Y642
PCA limited quantity max net quantity (IATA)	: 2L
PCA packing instructions (IATA)	: 655
PCA max net quantity (IATA)	: 60L
CAO packing instructions (IATA)	: 663
CAO max net quantity (IATA)	: 220L
ERG code (IATA)	: 6L

Inland waterway transport

Classification code (ADN)	: T1
Special provisions (ADN)	: 802
Limited quantities (ADN)	: 5 L
Excepted quantities (ADN)	: E1
Carriage permitted (ADN)	: T
Equipment required (ADN)	: PP, EP, TOX, A
Ventilation (ADN)	: VE02
Number of blue cones/lights (ADN)	: 0

Rail transport

Classification code (RID)	: T1
Limited quantities (RID)	: 5L
Excepted quantities (RID)	: E1
Packing instructions (RID)	: P001, IBC03, LP01, R001
Mixed packing provisions (RID)	: MP19
Portable tank and bulk container instructions (RID)	: T4
Portable tank and bulk container special provisions (RID)	: TP1
Tank codes for RID tanks (RID)	: L4BH
Special provisions for RID tanks (RID)	: TU15
Transport category (RID)	: 2
Special provisions for carriage – Packages (RID)	: W12
Special provisions for carriage - Loading, unloading and handling (RID)	: CW13, CW28, CW31
Colis express (express parcels) (RID)	: CE8
Hazard identification number (RID)	: 60

14.7. Maritime transport in bulk according to IMO instruments

Not applicable

SECTION 15: Regulatory information

15.1. Safety, health and environmental regulations/legislation specific for the substance or mixture

EU-Regulations

REACH Annex XVII (Restriction List)

EU restriction list (REACH Annex XVII)	
Reference code	Applicable on
3(b)	TETRACHLOROETHYLENE GC-HS
3(c)	TETRACHLOROETHYLENE GC-HS

REACH Annex XIV (Authorisation List)

Not listed on REACH Annex XIV (Authorisation List)

REACH Candidate List (SVHC)

Not listed on the REACH Candidate List

TETRACHLOROETHYLENE GC-HS

Safety Data Sheet

according to the REACH Regulation (EC) 1907/2006 amended by Regulation (EU) 2020/878

PIC Regulation (Prior Informed Consent)

Not listed on the PIC list (Regulation EU 649/2012)

POP Regulation (Persistent Organic Pollutants)

Not listed on the POP list (Regulation EU 2019/1021)

Ozone Regulation (2024/590)

Not listed on the Ozone Depletion list (Regulation EU 2024/590)

Council Regulation (EC) for the control of dual-use items

Not listed on the COUNCIL REGULATION (EC) of dual-use items.

Explosives Precursors Regulation (2019/1148)

Contains no substance(s) listed on the Explosives Precursors list (Regulation EU 2019/1148 on the marketing and use of explosives precursors)

Drug Precursors Regulation (273/2004)

Contains no substance(s) listed on the Drug Precursors list (Regulation EC 273/2004 on the manufacture and the placing on market of certain substances used in the illicit manufacture of narcotic drugs and psychotropic substances)

National regulations

France

Occupational diseases	
Code	Description
RG 12	Occupational diseases caused by the halogenated aliphatic hydrocarbons listed below: dichloromethane; trichloromethane; tribromomethane; triiodomethane; tetrabromomethane; chloroethane; 1,1-dichloroethane; 1,2-dichloroethane; 1,2-dibromoethane; 1,1,1-trichloroethane; 2-bromopropane; 1,2-dichloropropane; trichlorethylene; tetrachlorethylene; dichloroacetylene; trichlorofluoromethane; 1,1,2,2-tetrachloro-1,2-difluoroethane; 1,1,1-trichloro-2,2,2-trifluoroethane; 1,1-dichloro-2,2,2-trifluoroethane; 1,2-dichloro-1,1-difluoroethane; 1,1-dichloro-1-fluoroethane
RG 84	Conditions caused by liquid organic solvents for professional use: saturated or unsaturated aliphatic or cyclic liquid hydrocarbons and mixtures thereof; liquid halogenated hydrocarbons; nitrated derivatives of aliphatic hydrocarbons; alcohols; glycols, glycol ethers; ketones; aldehydes; aliphatic and cyclic ethers, including tetrahydrofuran; esters; dimethylformamide and dimethylacetamine; acetonitrile and propionitrile; pyridine; dimethylsulfone and dimethylsulfoxide

Germany

VOC ordinance (ChemVOCFarbV) :

Employment restrictions : Observe restrictions according Act on the Protection of Working Mothers (MuSchG).
Observe restrictions according Act on the Protection of Young People in Employment (JArbSchG).

Water hazard class (WGK) : WGK 3, Highly hazardous to water (Classification according to AwSV).

Hazardous Incident Ordinance (12. BImSchV) : Is not subject to the Hazardous Incident Ordinance (12. BImSchV)

Netherlands

SZW-lijst van kankerverwekkende stoffen : The substance is not listed

SZW-lijst van mutagene stoffen : The substance is not listed

SZW-lijst van reprotoxische stoffen – Borstvoeding : The substance is not listed

SZW-lijst van reprotoxische stoffen – Vruchtbaarheid : The substance is not listed

SZW-lijst van reprotoxische stoffen – Ontwikkeling : TETRACHLOROETHYLENE is listed

Denmark

Danish National Regulations : Young people below the age of 18 years are not allowed to use the product
Pregnant/breastfeeding women working with the product must not be in direct contact with the product

15.2. Chemical safety assessment

No chemical safety assessment has been carried out

TETRACHLOROETHYLENE GC-HS

Safety Data Sheet

according to the REACH Regulation (EC) 1907/2006 amended by Regulation (EU) 2020/878

SECTION 16: Other information

Abbreviations and acronyms:	
ACGIH	American Conference of Government Industrial Hygienists
ADN	European Agreement concerning the International Carriage of Dangerous Goods by Inland Waterways
ADR	European Agreement concerning the International Carriage of Dangerous Goods by Road
ATE	Acute Toxicity Estimate
BCF	Bioconcentration factor
BLV	Biological limit value
BOD	Biochemical oxygen demand (BOD)
CAS-No.	Chemical Abstract Service number
CLP	Classification Labelling Packaging Regulation; Regulation (EC) No 1272/2008
COD	Chemical oxygen demand (COD)
CSA	Chemical safety assessment
DMEL	Derived Minimal Effect level
DNEL	Derived-No Effect Level
EC-No.	European Community number
EC50	Median effective concentration
ED	Endocrine disruptor
EN	European Standard
EWC	European waste catalogue
IARC	International Agency for Research on Cancer
IATA	International Air Transport Association
IMDG	International Maritime Dangerous Goods
LC50	Median lethal concentration
LD50	Median lethal dose
LOAEL	Lowest Observed Adverse Effect Level
Log Kow	Partition coefficient n-octanol/water (Log Kow)
Log Pow	Partition coefficient n-octanol/water (Log Pow)
MAK	maximum workplace concentration
NOAEC	No-Observed Adverse Effect Concentration
NOAEL	No-Observed Adverse Effect Level
NOEC	No-Observed Effect Concentration
N.O.S.	Not Otherwise Specified
OECD	Organisation for Economic Co-operation and Development
OEL	Occupational Exposure Limit
OSHA	Occupational Safety & Health Administration
PBT	Persistent Bioaccumulative Toxic
PNEC	Predicted No-Effect Concentration
PPE	Personal protection equipment

TETRACHLOROETHYLENE GC-HS

Safety Data Sheet

according to the REACH Regulation (EC) 1907/2006 amended by Regulation (EU) 2020/878

Abbreviations and acronyms:

RID	Regulations concerning the International Carriage of Dangerous Goods by Rail
SDS	Safety Data Sheet
STP	Sewage treatment plant
TF	Technical function
ThOD	Theoretical oxygen demand (ThOD)
TLM	Median Tolerance Limit
TWA	Time Weighted Average
VOC	Volatile Organic Compounds
vPvB	Very Persistent and Very Bioaccumulative
UFI	Unique Formula Identifier

Full text of H- and EUH-statements:

Aquatic Chronic 2	Hazardous to the aquatic environment – Chronic Hazard, Category 2
Carc. 2	Carcinogenicity, Category 2
Skin Irrit. 2	Skin corrosion/irritation, Category 2
H315	Causes skin irritation.
H351	Suspected of causing cancer.
H411	Toxic to aquatic life with long lasting effects.

Safety Data Sheet (SDS), EU

This information is based on our current knowledge and is intended to describe the product for the purposes of health, safety and environmental requirements only. It should not therefore be construed as guaranteeing any specific property of the product.