

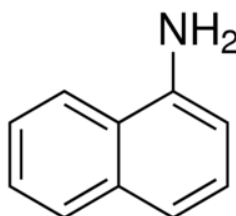
CAS No: 134-32-7 MSDS

MATERIAL SAFETY DATA SHEET (MSDS)

SECTION 1: Identification of the substance/mixture and of the company/undertaking

1.1. Product identifier

Product form : Substance
:
EC index no : 612-020-00-2
EC no : 205-138-7
CAS No : 134-32-7
Product code : 04795
Chemical structure :



1.2. Relevant identified uses of the substance or mixture and uses advised against

1.2.1. Relevant identified uses

Use of the substance/mixture : Laboratory chemicals, Manufacture of substances

1.2.2. Uses advised against

No additional information available

1.3. Details of the supplier of the safety data sheet

LOBA CHEMIE PVT.LTD.
107 Wode House Road, Jehangir Villa, Colaba
400005 Mumbai - INDIA
T +91 22 6663 6663 - F +91 22 6663 6699
info@lobachemie.com - www.lobachemie.com

1.4. Emergency telephone number

Emergency number : + 91 22 6663 6663 (9:00am - 6:00 pm)

SECTION 2: Hazards identification

2.1. Classification of the substance or mixture

Classification according to Regulation (EC) No. 1272/2008 [CLP]

Acute toxicity (oral), Category 4 H302
Carcinogenicity, Category 1A H350
Hazardous to the aquatic environment — Chronic Hazard, Category 2 H411

1-NAPHTHYLAMINE Extra Pure

Safety Data Sheet

Full text of classification categories and H statements : see section 16

Classification according to Directive 67/548/EEC or 1999/45/EC

Carc.Cat.1; R45

Xn; R22

N; R51/53

Full text of R-phrases: see section 16

Adverse physicochemical, human health and environmental effects

No additional information available

2.2. Label elements

Labelling according to Regulation (EC) No. 1272/2008 [CLP]

Hazard pictograms (CLP) :



GHS07



GHS08



GHS09

Signal word (CLP) : Danger

Hazard statements (CLP) : H302 - Harmful if swallowed
H350 - May cause cancer
H411 - Toxic to aquatic life with long lasting effects

Precautionary statements (CLP) : P201 - Obtain special instructions before use
P273 - Avoid release to the environment
P280 - Wear protective gloves/protective clothing/eye protection/face protection
P308+P313 - IF exposed or concerned: Get medical advice/attention

2.3. Other hazards

No additional information available

SECTION 3: Composition/information on ingredients

3.1. Substance

Name : 1-NAPHTHYLAMINE Extra Pure

CAS No : 134-32-7

EC no : 205-138-7

EC index no : 612-020-00-2

Full text of R- and H-phrases: see section 16

3.2. Mixture

Not applicable

1-NAPHTHYLAMINE Extra Pure

Safety Data Sheet

SECTION 4: First aid measures

4.1. Description of first aid measures

- First-aid measures after inhalation : Remove person to fresh air and keep comfortable for breathing. Give oxygen or artificial respiration if necessary. If you feel unwell, seek medical advice.
- First-aid measures after skin contact : Wash skin with plenty of water. If skin irritation occurs: Get medical advice/attention.
- First-aid measures after eye contact : Remove contact lenses, if present and easy to do. Continue rinsing. Rinse cautiously with water for several minutes. If eye irritation persists: Get medical advice/attention.
- First-aid measures after ingestion : Rinse mouth. Call a POISON CENTER or doctor/physician if you feel unwell.

4.2. Most important symptoms and effects, both acute and delayed

- Symptoms/injuries after ingestion : Harmful if swallowed.
- Chronic symptoms : May cause cancer.

4.3. Indication of any immediate medical attention and special treatment needed

Treat symptomatically.

SECTION 5: Firefighting measures

5.1. Extinguishing media

- Suitable extinguishing media : dry chemical powder, alcohol-resistant foam, carbon dioxide (CO₂).
- Unsuitable extinguishing media : Do not use a heavy water stream.

5.2. Special hazards arising from the substance or mixture

No additional information available

5.3. Advice for firefighters

- Protection during firefighting : Do not attempt to take action without suitable protective equipment.

SECTION 6: Accidental release measures

6.1. Personal precautions, protective equipment and emergency procedures

6.1.1. For non-emergency personnel

- Emergency procedures : Evacuate unnecessary personnel.

6.1.2. For emergency responders

- Protective equipment : Use personal protective equipment as required.
- Emergency procedures : Ventilate area.

6.2. Environmental precautions

Toxic to aquatic life with long lasting effects.

6.3. Methods and material for containment and cleaning up

- Methods for cleaning up : Clean up immediately by sweeping or vacuum.

6.4. Reference to other sections

No additional information available

SECTION 7: Handling and storage

7.1. Precautions for safe handling

- Precautions for safe handling : Do not get in eyes, on skin, or on clothing.
- Hygiene measures : Do not eat, drink or smoke when using this product. Wash ... thoroughly after handling.

7.2. Conditions for safe storage, including any incompatibilities

- Storage conditions : Store in original container. Keep container tightly closed. Store in a dry place.

1-NAPHTHYLAMINE Extra Pure

Safety Data Sheet

7.3. Specific end use(s)

No additional information available

SECTION 8: Exposure controls/personal protection

8.1. Control parameters

No additional information available

8.2. Exposure controls

Hand protection	: protective gloves
Eye protection	: Chemical goggles or safety glasses
Skin and body protection	: Wear suitable protective clothing
Respiratory protection	: Wear respiratory protection

SECTION 9: Physical and chemical properties

9.1. Information on basic physical and chemical properties

Physical state	: Solid
Colour	: Reddish Crystalline.
Odour	: ammonia odor.
Odour threshold	: No data available
pH	: 7.1 at 1 g/l at 20 °C
Relative evaporation rate (butylacetate=1)	: No data available
Melting point	: 47 - 50
Freezing point	: No data available
Boiling point	: 301 °C
Flash point	: 157 °C
Auto-ignition temperature	: No data available
Decomposition temperature	: No data available
Flammability (solid, gas)	: No data available
Vapour pressure	: 0.004 hPa at 20 °C
Relative vapour density at 20 °C	: No data available
Relative density	: No data available
Density	: 1.114 g/cm ³
Solubility	: Water: Very slightly soluble in cold water
Log Pow	: 2.1
Viscosity, kinematic	: No data available

1-NAPHTHYLAMINE Extra Pure

Safety Data Sheet

Viscosity, dynamic	: No data available
Explosive properties	: No data available
Oxidising properties	: No data available
Explosive limits	: No data available

9.2. Other information

No additional information available

SECTION 10: Stability and reactivity

10.1. Reactivity

No additional information available

10.2. Chemical stability

Stable under normal conditions.

10.3. Possibility of hazardous reactions

No additional information available

10.4. Conditions to avoid

Direct sunlight. Air contact. Moisture.

10.5. Incompatible materials

No additional information available

10.6. Hazardous decomposition products

No additional information available

SECTION 11: Toxicological information

11.1. Information on toxicological effects

Acute toxicity : Oral: Harmful if swallowed.

Skin corrosion/irritation : Not classified
pH: 7.1 at 1 g/l at 20 °C

Serious eye damage/irritation : Not classified
pH: 7.1 at 1 g/l at 20 °C

Respiratory or skin sensitisation : Not classified

Germ cell mutagenicity : Not classified

Carcinogenicity : May cause cancer.

Reproductive toxicity : Not classified

Specific target organ toxicity (single exposure) : Not classified

Specific target organ toxicity (repeated exposure) : Not classified

Aspiration hazard : Not classified

1-NAPHTHYLAMINE Extra Pure

Safety Data Sheet

Potential adverse human health effects and symptoms : Harmful if swallowed.

SECTION 12: Ecological information

12.1. Toxicity

Ecology - water : Toxic to aquatic life with long lasting effects.

12.2. Persistence and degradability

1-NAPHTHYLAMINE Extra Pure (134-32-7)

Persistence and degradability	May cause long-term adverse effects in the environment.
-------------------------------	---

12.3. Bioaccumulative potential

1-NAPHTHYLAMINE Extra Pure (134-32-7)

Log Pow	2.1
---------	-----

12.4. Mobility in soil

No additional information available

12.5. Results of PBT and vPvB assessment

No additional information available

12.6. Other adverse effects

No additional information available

SECTION 13: Disposal considerations

13.1. Waste treatment methods

Product/Packaging disposal recommendations : Dispose of contents/container to ...

SECTION 14: Transport information

In accordance with ADR / RID / IMDG / IATA / ADN

14.1. UN number

UN-No. (ADR)	: 2077
UN-No. (IMDG)	: 2077
UN-No.(IATA)	: 2077
UN-No.(ADN)	: 2077
UN-No. (RID)	: 2077

14.2. UN proper shipping name

Proper Shipping Name (ADR)	: ALPHA-NAPHTHYLAMINE
Proper Shipping Name (IMDG)	: alpha-NAPHTHYLAMINE
Proper Shipping Name (IATA)	: ALPHA-NAPHTHYLAMINE
Proper Shipping Name (ADN)	: alpha-NAPHTHYLAMINE
Proper Shipping Name (RID)	: alpha-NAPHTHYLAMINE

1-NAPHTHYLAMINE Extra Pure

Safety Data Sheet

Transport document description (ADR)	: UN 2077 ALPHA-NAPHTHYLAMINE, 6.1, III, (E), ENVIRONMENTALLY HAZARDOUS
Transport document description (IMDG)	: UN 2077 alpha-NAPHTHYLAMINE, 6.1, III, MARINE POLLUTANT/ENVIRONMENTALLY HAZARDOUS
Transport document description (IATA)	: UN 2077 ALPHA-NAPHTHYLAMINE, 6.1, III, ENVIRONMENTALLY HAZARDOUS
Transport document description (ADN)	: UN 2077 alpha-NAPHTHYLAMINE, 6.1, III, ENVIRONMENTALLY HAZARDOUS
Transport document description (RID)	: UN 2077 alpha-NAPHTHYLAMINE, 6.1, III, ENVIRONMENTALLY HAZARDOUS

14.3. Transport hazard class(es)

ADR

Transport hazard class(es) (ADR)	: 6.1
Danger labels (ADR)	: 6.1



IMDG

Transport hazard class(es) (IMDG)	: 6.1
Danger labels (IMDG)	: 6.1



IATA

Transport hazard class(es) (IATA)	: 6.1
Hazard labels (IATA)	: 6.1



ADN

Transport hazard class(es) (ADN)	: 6.1
Danger labels (ADN)	: 6.1



RID

Transport hazard class(es) (RID)	: 6.1
Danger labels (RID)	: 6.1



1-NAPHTHYLAMINE Extra Pure

Safety Data Sheet

14.4. Packing group

Packing group (ADR)	: III
Packing group (IMDG)	: III
Packing group (IATA)	: III
Packing group (ADN)	: III
Packing group (RID)	: III

14.5. Environmental hazards

Dangerous for the environment	: Yes
Marine pollutant	: Yes
Other information	: No supplementary information available

14.6. Special precautions for user

- Overland transport

Classification code (ADR)	: T2
Limited quantities (ADR)	: 5kg
Excepted quantities (ADR)	: E1
Packing instructions (ADR)	: P002, IBC08, LP02, R001
Special packing provisions (ADR)	: B3
Mixed packing provisions (ADR)	: MP10
Portable tank and bulk container instructions (ADR)	: T1
Portable tank and bulk container special provisions (ADR)	: TP33
Tank code (ADR)	: SGAH, L4BH
Tank special provisions (ADR)	: TU15, TE19
Vehicle for tank carriage	: AT
Transport category (ADR)	: 2
Special provisions for carriage - Bulk (ADR)	: VC1, VC2, AP7
Special provisions for carriage - Loading, unloading and handling (ADR)	: CV13, CV28
Special provisions for carriage - Operation (ADR)	: S9
Hazard identification number (Kemler No.)	: 60
Orange plates	:



Tunnel restriction code (ADR)	: E
EAC code	: 2Z

- Transport by sea

Limited quantities (IMDG)	: 5 kg
Excepted quantities (IMDG)	: E1
Packing instructions (IMDG)	: P002, LP02
IBC packing instructions (IMDG)	: IBC08
IBC special provisions (IMDG)	: B3
Tank instructions (IMDG)	: T1
Tank special provisions (IMDG)	: TP33
EmS-No. (Fire)	: F-A
EmS-No. (Spillage)	: S-A
Stowage category (IMDG)	: A
MFAG-No	: 153

1-NAPHTHYLAMINE Extra Pure

Safety Data Sheet

- Air transport

PCA Excepted quantities (IATA)	: E1
PCA Limited quantities (IATA)	: Y645
PCA limited quantity max net quantity (IATA)	: 10kg
PCA packing instructions (IATA)	: 670
PCA max net quantity (IATA)	: 100kg
CAO packing instructions (IATA)	: 677
CAO max net quantity (IATA)	: 200kg
ERG code (IATA)	: 6L

- Inland waterway transport

Classification code (ADN)	: T2
Special provisions (ADN)	: 802
Limited quantities (ADN)	: 5 kg
Excepted quantities (ADN)	: E1
Equipment required (ADN)	: PP, EP
Number of blue cones/lights (ADN)	: 0

- Rail transport

Classification code (RID)	: T2
Limited quantities (RID)	: 5kg
Excepted quantities (RID)	: E1
Packing instructions (RID)	: P002, IBC08, LP02, R001
Special packing provisions (RID)	: B3
Mixed packing provisions (RID)	: MP10
Portable tank and bulk container instructions (RID)	: T1
Portable tank and bulk container special provisions (RID)	: TP33
Tank codes for RID tanks (RID)	: SGAH, L4BH
Special provisions for RID tanks (RID)	: TU15
Transport category (RID)	: 2
Special provisions for carriage – Bulk (RID)	: VC1, VC2, AP7
Special provisions for carriage – Loading and unloading (RID)	: CW13, CW28, CW31
Colis express (express parcels) (RID)	: CE11
Hazard identification number (RID)	: 60

14.7. Transport in bulk according to Annex II of MARPOL 73/78 and the IBC Code

Not applicable

SECTION 15: Regulatory information

15.1. Safety, health and environmental regulations/legislation specific for the substance or mixture

15.1.1. EU-Regulations

No REACH Annex XVII restrictions

1-NAPHTHYLAMINE Extra Pure is not on the REACH Candidate List

1-NAPHTHYLAMINE Extra Pure is not on the REACH Annex XIV List

1-NAPHTHYLAMINE Extra Pure

Safety Data Sheet

15.1.2. National regulations

Germany

AwSV/VwVwS Annex reference : Water hazard class (WGK) 2, hazardous to water (Classification according to VwVwS, Annex 2; WGK No 822)

12th Ordinance Implementing the Federal Immission Control Act - 12.BImSchV : Is not subject of the 12. BImSchV (Hazardous Incident Ordinance)

Denmark

Recommendations Danish Regulation : Young people below the age of 18 years are not allowed to use the product
Pregnant/breastfeeding women working with the product must not be in direct contact with the product
The requirements from the Danish Working Environment Authorities regarding work with carcinogens must be followed during use and disposal

15.2. Chemical safety assessment

No additional information available

SECTION 16: Other information

Full text of R-, H- and EUH-phrases:

Acute Tox. 4 (Oral)	Acute toxicity (oral), Category 4
Aquatic Chronic 2	Hazardous to the aquatic environment — Chronic Hazard, Category 2
Carc. 1A	Carcinogenicity, Category 1A
H302	Harmful if swallowed
H350	May cause cancer
H411	Toxic to aquatic life with long lasting effects
R22	Harmful if swallowed
R45	May cause cancer
R51/53	Toxic to aquatic organisms, may cause long-term adverse effects in the aquatic environment
N	Dangerous for the environment
Xn	Harmful

This information is based on our current knowledge and is intended to describe the product for the purposes of health, safety and environmental requirements only. It should not therefore be construed as guaranteeing any specific property of the product