

6-BENZYL ADENINE EXTRA PURE

□□□□□□□□

□□ (EU) 2020/878 □□ □□ □□ REACH □□ (EC) 1907/2006 □□ □□

SDS Reference Number: 01924

□□ □□□□: 4/9/2014 □□ □□□□: 1/31/2025 □□ □□: 4/29/2016 □□: 1.0

□□ 1: □□□□ □□ □□ □□ □□

1.1. □□□□

□□ □□

: □□

□□ □□

: 6-BENZYL ADENINE EXTRA PURE

IUPAC □□

: N-Benzyl-7H-purin-6-amine

EC □□

: 214-927-5

CAS □□

: 1214-39-7

□□ □□

: 01924

□□ □□

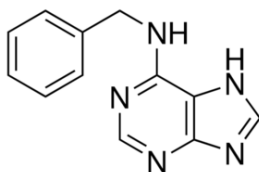
: Heterocyclic organic compound

□□ □□

: C12H11N5

□□ □□

:



□□ □□

: 6-Benzylaminopurine, N6-Benzyladenine

1.2. □□□□ □□ □□□□ □□ □□ □□ □□

□□ □□ □□

□□□□/□□□□ □□

: Laboratory chemicals, Manufacture of substances

1.3. □□□□□□□□ □□ □□ □□

LOBA CHEMIE PVT.LTD.

107 Wode House Road, Jehangir Villa, Colaba

400005 Mumbai

INDIA

T +91 22 6663 6663, F +91 22 6663 6699

info@lobachemie.com, www.lobachemie.com

1.4. □□□□□□

□□ □□ □□

: + 91 22 6663 6663 (9:00am - 6:00 pm)

□□ 2: □□□·□□□

2.1. □□□·□□□ □□

Regulation (EC) No.1272/2008 [CLP] □□ □□ □□

□□ □□□/□□ □□□, □□ 2

H315

□□ □ □□□/□ □□□, □□ 2

H319

□□□□□□ □□ - 1□ □□, □□ 3, □□□□ □□

H335

□□(H) □□ □ EUH □□ □□: 16□ □□.

□□□□□, □□ □□ □ □□□□□□□

□□□ □□□ □□□ □ □□. □□□ □□□ □□□. □□ □□ □□□ □□□.

2.2. □□□□□□□□ □□□ □□□□ □□

□□ (EC) No. 1272/2008 □□ □□ □□ □□[CLP]

□□ □□ □□□□(CLP)

:



GHS07

□□□ (CLP)

: □□

6-BENZYL ADENINE EXTRA PURE

□□□□□□□□

□□ (EU) 2020/878 □□ □□ REACH □□ (EC) 1907/2006 □□ □□

□□·□□ □□ (CLP) : H315 - □□□ □□□ □□□.
H319 - □□ □□ □□□ □□□.
H335 - □□□ □□□ □□□ □□□.
□□ □□ □□(CLP) : P261 - □□, □□, □, □□ □ □□□ □□□□.
P264 - □□ □□□ hands and forearms □(□) □□□ □□□□.
P302+P352 - □□□ □□□ □□□ □ □□□□.
P305+P351+P338 - □□ □□□□: □ □□ □□ □□□□ □□□□. □□□□ □□□ □□□ □□□□. □□ □□□.

2.3. □□ □□

Contains no PBT and/or vPvB substances ≥ 0.1% assessed in accordance with REACH Annex XIII

□□ 3: □□□□□ □□ □ □□□

3.1. □□□□

□□ □□ : □□□□□□

□□	□□□□	%
6-BENZYL ADENINE	CAS □□: 1214-39-7 EC □□: 214-927-5	100

□□ 4: □□□□□□

4.1. □□□□ □□

□□ □□ □□ : □□□□ □□□ □□□□(□□)□ □□□ □□□□.
□□□□ □□ : □□□ □□□ □□ □□□ □□□ □□□□ □□ □□□ □□□ □□□ □□□ □□□ □□□ □□□□ □□□□(□□)□ □□□ □□□□.
□□□□ □□□□ □□□□(□□)□ □□□ □□□□.
□□□ □□□□ □□ : □□□ □□□ □□ □□□□. □□ □□ □ □□□ □□□□□□□□. □□□□ □□/□□□ □□□□. Wash skin with plenty of water. □□□ □□□ □□□□. □□ □□□ □□□□: □□□□ □□/□□□ □□□□.
□□ □□□□ □□ : □ □□ □□ □□□□ □□□□. □□□□ □□□□□□ □□□□□□. □□ □□□□. □□□□ □□/□□□ □□□□ □□□□ □□□□: □□□□ □□/□□□ □□□□.
□□□ □□ : □□ □□□□□□. Do not induce vomiting. □□□□ □□□ □□□□(□□)□ □□□ □□□□.
First-aid measures for first aider : □□□□ □□□□ □□□ □□ □□ □□□ □□□□ □□□□.

4.2. □□ □ □□□ □□ □□□ □□ □ □□

□□ □ □□/□□ : □□□ □□□ □□□ □ □□.
□□ □□ □ □□/□□ : □□□ □□□ □□□. □□.
□ □□ □ □□/□□ : □□ □□ □□□ □□□. Eye irritation.
□□ □ □□/□□ : None under normal conditions.

4.3. □□□□ □□ □ □□ □□ □□ □□ □□

Treat symptomatically.

□□ 5: □□·□□□ □□□□

5.1. □□□ □□□

□□□ □□□ : Carbon dioxide. Dry powder. Foam. Water spray.
□□□□ □□□ : Do not use a heavy water stream.

5.2. □□□□□□□ □□□ □□ □□□

□□ □□ : No fire hazard.

6-BENZYL ADENINE EXTRA PURE

□□□□□□□□

□□ (EU) 2020/878 □□ □□□ REACH □□ (EC) 1907/2006 □□

- □□ : No direct explosion hazard.
- □□ □□ □□ □□ : Toxic fumes may be released.

5.3. □□□□ □□□□ □□□□

- □□ : Fight fire from safe distance and protected location. Do not enter fire area without proper protective equipment, including respiratory protection.
- □□ □□ □□ : Do not enter fire area without proper protective equipment, including respiratory protection. Do not attempt to take action without suitable protective equipment. □□□ □□□□□. Complete protective clothing.

□□ 6: □□□□□ □□□□

6.1. □□□ □□□□ □□ □□□ □□□□ □□□□

- □□ : □□□ □□□ □□ □□□□□ □□□ □□ □□□ □□. □□□□□ □□□□ □□ □□□□ □□□□□□.
- □□ □□
- □□ : Wear recommended personal protective equipment.
- □□ : Ventilate spillage area. Evacuate unnecessary personnel. □□/□□/□□□/□□/□□□□ □□ □□□ □□. □□ □□□ □□□ □□□□.
- □□ □□
- □□ : Do not attempt to take action without suitable protective equipment. □□□ □□ □□□□ □□□□□. □□ □□□ □□□ □□ 8: "□□□□ □□□□□□" □□□□□□.
- □□ : Ventilate area. Evacuate unnecessary personnel.

6.2. □□□ □□□□ □□ □□□ □□□□

□□□□ □□□□ □□□.

6.3. □□ □□ □□ □□

- : Using a clean shovel, put the material in a dry container and cover without compressing it.
- □□ : Mechanically recover the product. Soak up spills with inert solids, such as clay or diatomaceous earth as soon as possible. On land, sweep or shovel into suitable containers.
- □□ □□□□ : Dispose of materials or solid residues at an authorized site.

6.4. □□ □□ □□

For further information refer to section 13.

□□ 7: □□ □□ □□□□

7.1. □□□□□□

- □□ □□□□□ □□ □□ : □□□□ □□ □□□□□ □□□ □□□ □□□ □□.
- : □□ □□ □□□ □□□ □□□□. □□ □□ □□□ □□ □□□□ □□□□□. Do not breathe vapours. □□/□□/□□□/□□/□□□□ □□ □□□□ □□□□□.
- □□ : Wash hands and other exposed areas with mild soap and water before eating, drinking or smoking and when leaving work. □□ □□ □□ □□□ □□□□□□. □□□□ □□□ □□□ □□□, □□□□ □□ □□ □□□. Always wash hands after handling the product.

7.2. □□□□ □□□ □□□ □□□ □□ □□

- □□ : Keep in a cool, well-ventilated place away from heat.
- □□ : □□□ □□□ □□□□□. □□□ □□ □□ □□□□□. Store in original container. □□□□□ □□ □□□ □□.
- : Store always product in container of same material as original container.

7.3. □□ □□ □□

□□ □□

6-BENZYL ADENINE EXTRA PURE

□□□□□□□□

□□ (EU) 2020/878 □□ □□□ REACH □□ (EC) 1907/2006 □□ □□

□□ 8: □□□□ □□□□□□

8.1. □□ □□ □□

□□ □□

8.2. □□□□

□□□ □□□ □□

□□□ □□□ □□:

Ensure good ventilation of the work station.

□□ □□□

□□ □□□:

Wear recommended personal protective equipment.

□□ □□ □□ □□:



□□ □□ □□□□

□□ □□:

Chemical goggles or safety glasses

Skin protection

□□ □□:

Wear a mask

□□ □□:

Protective gloves

□□□ □□□

□□□ □□□:

Wear appropriate mask

□□ □□ □□

□□ □□ □□:

□□□□ □□□□ □□□.

□□ 9: □□□□□ □□

9.1. □□□□ □□□□□ □□□ □□ □□

□□□ □□

: □□

□□

: White to light yellow.

□□

: Powder.

□□□

: 225.26 g/mol

□□

: Odourless.

□□ □□

: □□□□

□□□

: 230 – 234 °C

□□□

: □□□□

□□ □□□□ □□□ □□

: □□□□

□□□

: □□□

□□ □□□

: □□□□

□□ □□□

: □□□□

□□□

: □□□□

□□□□ □□

: □□□□

□□ □□

: □□□□

pH

: □□□□

pH □□

: □□□□

□□(□□□)

: □□□□

6-BENZYL ADENINE EXTRA PURE

□□□□□□□□

□□ (EU) 2020/878 □□ □□□ REACH □□ (EC) 1907/2006 □□ □□

□□□□ : □: 60 mg/l at 20 °C - Insoluble in water
Partition coefficient n-octanol/water (Log Kow) : □□□□
□□□□ : < 0.1 hPa at 25 °C
50°C□□□□ □□□□ : □□□□
□□ : □□□□
□□ : □□□□
20°C□□□□ □□ □□ □□ : □□□□
Particle size : □□□□

9.2. □□□□□□□□

□□ □□

□□ 10: □□□□ □□□□

10.1. □□□□

The product is non-reactive under normal conditions of use, storage and transport.

10.2. □□□□ □□□□

Stable under normal conditions.

10.3. □□ □□□□ □□□□

No dangerous reactions known under normal conditions of use.

10.4. □□□□ □□□□

□□□□. Air contact. Moisture.

10.5. □□□□ □□□□

□□ □□

10.6. □□□□ □□□□ □□□□

Under normal conditions of storage and use, hazardous decomposition products should not be produced.

□□ 11: □□□□ □□□□

11.1. □□ (EC) No 1272/2008 □□□□, □□□□ □□□□ □□□□

□□ □□ (□□) : □□□□ □□
□□ □□ (□□) : □□□□ □□
□□ □□ (□□) : □□□□ □□
□□ □□□□ □□ □□□□ : □□□□ □□□□ □□□□.
□□ □□ □□ □□ □□□□ : □□ □□ □□□□ □□□□.
□□□□ □□ □□ □□□□ : □□□□ □□
□□□□ □□□□□□ : □□□□ □□
□□□□ : □□□□ □□
□□□□ : □□□□ □□
□□ □□□□ □□ (1□□ □□) : □□□□ □□□□ □□□□ □□□□.
□□ □□□□ □□ (□□ □□) : □□□□ □□
□□ □□□□ : □□□□ □□

6-BENZYL ADENINE EXTRA PURE (1214-39-7)

□□(□□□□) □□□□

11.2. □□ □□ □□

□□ □□

6-BENZYL ADENINE EXTRA PURE

□□□□□□□□

□□ (EU) 2020/878 □□ □□ □□ REACH □□ (EC) 1907/2006 □□ □□

□□ 12: □□□ □□□ □□

12.1. □□

□□□ - □□ : The product is not considered harmful to aquatic organisms nor to cause long-term adverse effects in the environment.
□□ □□□□ □□□ : □□□□ □□
□□ □□□□ □□□ : □□□□ □□

12.2. □□□ □ □□□

6-BENZYL ADENINE EXTRA PURE (1214-39-7)	
□□□ □ □□□	□□ □□ □□

12.3. □□ □□□

□□ □□

12.4. □□ □□□

□□ □□

12.5. PBT □ vPvB □□ □□

□□ □□

12.6. □□□ □□ □□

□□ □□

12.7. □□ □□ □□

□□ □□

□□ 13: □□□ □□□□

13.1. □□□ □□□

□□ □□(□□□) : Disposal must be done according to official regulations.
□□□ □□□ : Dispose of contents/container in accordance with licensed collector's sorting instructions.
□□ □□ □□ □□ : Disposal must be done according to official regulations.
□□/□□ □□ □□□□ : Comply with applicable regulations for solid waste disposal. Disposal must be done according to official regulations.
□□ □□ : Do not re-use empty containers.

□□ 14: □□□ □□□ □□

ADR / IMDG / IATA / ADN / RID □□ □□

14.1. UN □□ □□ ID □□

□□ □□□□ □□□□

14.2. UN □□ □□□

□□ □□□ (ADR) : Not regulated
□□ □□□ (IMDG) : Not regulated
□□ □□□ (IATA) : Not regulated
□□ □□□ (ADN) : Not regulated
□□ □□□ (RID) : Not regulated

14.3. □□□□□ □□□ □□

ADR
□□□□□ □□□ □□ (ADR) : Not regulated

6-BENZYL ADENINE EXTRA PURE

□□□□□□□□

□□ (EU) 2020/878 □□ □□□ REACH □□ (EC) 1907/2006 □□ □□

IMDG

□□□□□ □□□ □□ (IMDG) : Not regulated

IATA

□□□□□ □□□ □□ (IATA) : Not regulated

ADN

□□□□□ □□□ □□ (ADN) : Not regulated

RID

□□□□□ □□□ □□ (RID) : Not regulated

14.4. □□□□

□□ □□ (ADR) : Not regulated

□□ □□ (IMDG) : Not regulated

□□ □□ (IATA) : Not regulated

□□ □□ (ADN) : Not regulated

□□ □□ (RID) : Not regulated

14.5. □□ □□□

□□ □□ □□□□ : □□ □□ □□ □□

14.6. □□□□ □□ □□ □□□□

□□ □□

Not regulated

□□ □□

Not regulated

□□ □□

Not regulated

□□ □□ □□

Not regulated

□□ □□

Not regulated

14.7. □□□□□□ (IMO) □□ □□ □□ □□

□□□□

□□ 15: □□ □□□□

15.1. □□, □□ □□□□ □□□□ □□ □□□□ □□ □□ □□/□□

EU □□

REACH □□□ XVII (□□ □□)

REACH □□□ XVII □□□□ □□

REACH □□□ XIV (□□ □□)

REACH □□□ XIV (□□ □□) □□□□ □□

REACH □□ □□ □□ (SVHC)

REACH □□ □□ □□ □□ □□ □□□□ □□

PIC □□ (□□□□□□)

PIC □□□ □□□□ □□ (□□ EU 649/2012)

6-BENZYL ADENINE EXTRA PURE

□□□□□□□□

□□ (EU) 2020/878 □□ □□ □□ REACH □□ (EC) 1907/2006 □□ □□

POP □□ (□□□ □□ □□□□)

POP □□□ □□□□ □□ (□□ EU 2019/1021)

Ozone Regulation (2024/590)

Not listed on the Ozone Depletion list (Regulation EU 2024/590)

□□□□ □□(428/2009)

Contains no substance subject to the COUNCIL REGULATION (EC) for the control of dual-use items

□□ □□□□ □□ (2019/1148)

□□□ □□□□ □□(□□ □□□□□ □□ □ □□□ □□ □□ EU 2019/1148) □□□ □□ □□□□ □□

□□ □□□□ □□ (273/2004)

□□ □□□□ □□□ □□□ □□□□ □□(□□ □ □□□□ □□□ □□□ □□□□ □□ □□□ □□ □□ EC 273/2004)

□□ □□

□□

VOC ordinance (ChemVOCFarbV)

:

WGK

: WGK 3, □□ □□ □□□ (Classification according to AwSV).

□□ □□ □□(12. BImSchV)

: □□ □□ □□(12. BImSchV) □□ □□ □□

□□□□

SZW-lijst van kankerverwekkende stoffen

: □□□ □□□□ □□□□□.

SZW-lijst van mutagene stoffen

: □□□ □□□□ □□□□□.

SZW-lijst van reprotoxische stoffen – Borstvoeding

: □□□ □□□□ □□□□□.

SZW-lijst van reprotoxische stoffen – Vruchtbaarheid

: □□□ □□□□ □□□□□.

SZW-lijst van reprotoxische stoffen – Ontwikkeling

: □□□ □□□□ □□□□□.

□□□

□□□ □□ □□

: 18□ □□ □□□ □□ □□□ □□□□□

15.2. □□ □□ □□□ □□

No chemical safety assessment has been carried out

□□ 16: □ □□ □□□□

□□ □ □□□□:	
ACGIH	American Conference of Government Industrial Hygienists
ADN	European Agreement concerning the International Carriage of Dangerous Goods by Inland Waterways
ADR	European Agreement concerning the International Carriage of Dangerous Goods by Road
ATE	Acute Toxicity Estimate
BCF	Bioconcentration factor
BLV	□□ □□ □
BOD	Biochemical oxygen demand (BOD)
CAS □□	□□□□ □□ □□ □□(CAS)
CLP	Classification Labelling Packaging Regulation; Regulation (EC) No 1272/2008
COD	□□□ □□ □□□
CSA	□□ □□ □□□ □□
DMEL	Derived Minimal Effect level
DNEL	□□ □□□ □□
EC □□	□□ □□□ □□

6-BENZYL ADENINE EXTRA PURE

□□□□□□□□

□□ (EU) 2020/878 □□ □□□ REACH □□ (EC) 1907/2006 □□ □□

□□ □ □□□□□:	
EC50	Median effective concentration
ED	□□□ □□□□
EN	□□ □□
EWC	European waste catalogue
IARC	International Agency for Research on Cancer
IATA	International Air Transport Association
IMDG	International Maritime Dangerous Goods
LC50	Median lethal concentration
LD50	Median lethal dose
LOAEL	Lowest Observed Adverse Effect Level
Log Kow	Partition coefficient n-octanol/water (Log Kow)
Log Pow	Partition coefficient n-octanol/water (Log Pow)
MAK	maximum workplace concentration
NOAEC	No-Observed Adverse Effect Concentration
NOAEL	No-Observed Adverse Effect Level
NOEC	No-Observed Effect Concentration
N.O.S.	Not Otherwise Specified
OECD	Organisation for Economic Co-operation and Development
OEL	□□□ □□ □□
OSHA	Occupational Safety & Health Administration
PBT	Persistent Bioaccumulative Toxic
PNEC	□□ □□□ □□
PPE	□□ □□□
RID	Regulations concerning the International Carriage of Dangerous Goods by Rail
SDS	□□□□□□□□
STP	Sewage treatment plant
TF	□□□ □□
ThOD	Theoretical oxygen demand (ThOD)
TLM	Median Tolerance Limit
TWA	Time Weighted Average
COV	Volatile Organic Compounds
vPvB	Very Persistent and Very Bioaccumulative
UFI	□□ □□ □□□

□H□ □ EUH□ □□:	
□ □□□ 2	□□ □ □□□/□ □□□, □□ 2
□□ □□□□ □□ (1□ □□) 3	□□□□□□ □□ - 1□ □□, □□ 3, □□□□ □□
□□ □□□ 2	□□ □□□/□□ □□□, □□ 2
H315	□□□ □□□ □□□.

6-BENZYL ADENINE EXTRA PURE

□□□□□□□□

□□ (EU) 2020/878 □□ □□□ REACH □□ (EC) 1907/2006 □□ □□

□H□ □ EUH□ □□:	
H319	□□ □□ □□ □□□.
H335	□□□ □□□ □□□ □ □□.

□□□□□□□(SDS), EU

□ □□□ □□ □□□ □□ □□□ □□ □ □□ □□, □□ □ □□ □□□ □□□ □□ □□□□ □□ □□□□. □□□□ □□□ □□□ □□□ □□□ □□ □□ □□□ □ □□□.