

## Safety Data Sheet

according to the REACH Regulation (EC) 1907/2006 amended by Regulation (EU) 2020/878

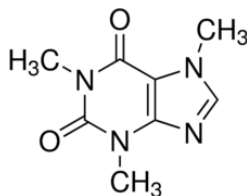
Reference number: 02429

Issue date: 25.09.2023 Revision date: 25.09.2023 Supersedes version of: 16.05.2016 Version: 1.0

## SECTION 1: Identification of the substance/mixture and of the company/undertaking

### 1.1. Product identifier

Product form	: Substance
Trade name	: CAFFEINE ANHYDROUS EXTRA PURE
EC Index-No.	: 613-086-00-5
EC-No.	: 200-362-1
CAS-No.	: 58-08-2
Product code	: 02429
Formula	: C <sub>8</sub> H <sub>10</sub> N <sub>4</sub> O <sub>2</sub>
Chemical structure	:



Synonyms	: 3,7-Dihydro-1,3,7-Trimethyl-1H-Purine-2,6-Dione; 1,3,7-Trimethyl xanthine; Methyl theobromide
----------	---

### 1.2. Relevant identified uses of the substance or mixture and uses advised against

#### 1.2.1. Relevant identified uses

Use of the substance/mixture	: Laboratory chemicals, Manufacture of substances
------------------------------	---

#### 1.2.2. Uses advised against

No additional information available

### 1.3. Details of the supplier of the safety data sheet

LOBA CHEMIE PVT.LTD.  
107 Wode House Road, Jehangir Villa, Colaba  
400005 Mumbai  
INDIA  
T +91 22 6663 6663 - F +91 22 6663 6699  
[info@lobachemie.com](mailto:info@lobachemie.com) - [www.lobachemie.com](http://www.lobachemie.com)

### 1.4. Emergency telephone number

Emergency number	: + 91 22 6663 6663 (9:00am - 6:00 pm)
------------------	--

## SECTION 2: Hazards identification

### 2.1. Classification of the substance or mixture

#### Classification according to Regulation (EC) No. 1272/2008 [CLP]

Acute toxicity (oral), Category 4 H302

Full text of H- and EUH-statements: see section 16

#### Adverse physicochemical, human health and environmental effects

Harmful if swallowed.

# CAFFEINE ANHYDROUS EXTRA PURE

## Safety Data Sheet

according to the REACH Regulation (EC) 1907/2006 amended by Regulation (EU) 2020/878

### 2.2. Label elements

#### Labelling according to Regulation (EC) No. 1272/2008 [CLP]

Hazard pictograms (CLP) :



GHS07

Signal word (CLP) :

Warning

Hazard statements (CLP) :

H302 - Harmful if swallowed.

Precautionary statements (CLP) :

P301+P312 - IF SWALLOWED: Call a POISON CENTRE or doctor if you feel unwell.  
P330 - Rinse mouth.

#### Nordic countries regulation

##### Denmark

MAL code

: 00-3 (Executive Order No. 301 (1993))

### 2.3. Other hazards

Contains no PBT/vPvB substances  $\geq 0.1\%$  assessed in accordance with REACH Annex XIII

## SECTION 3: Composition/information on ingredients

### 3.1. Substances

Substance type

: Mono-constituent

Name

: CAFFEINE ANHYDROUS

CAS-No.

: 58-08-2

EC-No.

: 200-362-1

EC Index-No.

: 613-086-00-5

Name	Product identifier	%
CAFFEINE ANHYDROUS	CAS-No.: 58-08-2 EC-No.: 200-362-1 EC Index-No.: 613-086-00-5	100

### 3.2. Mixtures

Not applicable

## SECTION 4: First aid measures

### 4.1. Description of first aid measures

First-aid measures general

: Call a poison center or a doctor if you feel unwell.

First-aid measures after inhalation

: Remove person to fresh air and keep comfortable for breathing.

First-aid measures after skin contact

: Wash with plenty of water/.... Get medical advice/attention. Wash skin with plenty of water.

First-aid measures after eye contact

: Rinse cautiously with water for several minutes. Remove contact lenses, if present and easy to do. Continue rinsing. Get medical advice/attention.

First-aid measures after ingestion

: Rinse mouth. Call a POISON CENTER/doctor if you feel unwell. Call a poison center or a doctor if you feel unwell.

### 4.2. Most important symptoms and effects, both acute and delayed

Symptoms/effects after ingestion

: Harmful if swallowed.

### 4.3. Indication of any immediate medical attention and special treatment needed

Treat symptomatically.

# CAFFEINE ANHYDROUS EXTRA PURE

## Safety Data Sheet

according to the REACH Regulation (EC) 1907/2006 amended by Regulation (EU) 2020/878

### SECTION 5: Firefighting measures

#### 5.1. Extinguishing media

Suitable extinguishing media : Carbon dioxide. Dry powder. Foam. Water spray.  
Unsuitable extinguishing media : Do not use a heavy water stream.

#### 5.2. Special hazards arising from the substance or mixture

Hazardous decomposition products in case of fire : Toxic fumes may be released.

#### 5.3. Advice for firefighters

Protection during firefighting : Do not enter fire area without proper protective equipment, including respiratory protection. Do not attempt to take action without suitable protective equipment. Self-contained breathing apparatus. Complete protective clothing.

### SECTION 6: Accidental release measures

#### 6.1. Personal precautions, protective equipment and emergency procedures

##### 6.1.1. For non-emergency personnel

Emergency procedures : Ventilate spillage area. Evacuate unnecessary personnel.

##### 6.1.2. For emergency responders

Protective equipment : Do not attempt to take action without suitable protective equipment. Use personal protective equipment as required. For further information refer to section 8: "Exposure controls/personal protection".

#### 6.2. Environmental precautions

Avoid release to the environment.

#### 6.3. Methods and material for containment and cleaning up

Methods for cleaning up : Mechanically recover the product. On land, sweep or shovel into suitable containers. Soak up spills with inert solids, such as clay or diatomaceous earth as soon as possible.  
Other information : Dispose of materials or solid residues at an authorized site.

#### 6.4. Reference to other sections

For further information refer to section 13.

### SECTION 7: Handling and storage

#### 7.1. Precautions for safe handling

Precautions for safe handling : Ensure good ventilation of the work station. Wear personal protective equipment. Avoid contact with skin and eyes. Do not breathe vapours. Provide good ventilation in process area to prevent formation of vapour.  
Hygiene measures : Do not eat, drink or smoke when using this product. Wash hands and other exposed areas with mild soap and water before eating, drinking or smoking and when leaving work. Always wash hands after handling the product.

#### 7.2. Conditions for safe storage, including any incompatibilities

Storage conditions : Store in a well-ventilated place. Keep container tightly closed. Store in a well-ventilated place. Keep cool.

#### 7.3. Specific end use(s)

No additional information available

# CAFFEINE ANHYDROUS EXTRA PURE

## Safety Data Sheet

according to the REACH Regulation (EC) 1907/2006 amended by Regulation (EU) 2020/878

### SECTION 8: Exposure controls/personal protection

#### 8.1. Control parameters

##### 8.1.1 National occupational exposure and biological limit values

No additional information available

##### 8.1.2. Recommended monitoring procedures

No additional information available

##### 8.1.3. Air contaminants formed

No additional information available

##### 8.1.4. DNEL and PNEC

No additional information available

##### 8.1.5. Control banding

No additional information available

#### 8.2. Exposure controls

##### 8.2.1. Appropriate engineering controls

###### Appropriate engineering controls:

Ensure good ventilation of the work station.

##### 8.2.2. Personal protection equipment

###### Personal protective equipment symbol(s):



###### 8.2.2.1. Eye and face protection

###### Eye protection:

Chemical goggles or safety glasses

###### 8.2.2.2. Skin protection

###### Skin and body protection:

Wear suitable protective clothing

###### Hand protection:

Protective gloves

###### 8.2.2.3. Respiratory protection

###### Respiratory protection:

[In case of inadequate ventilation] wear respiratory protection.

###### 8.2.2.4. Thermal hazards

No additional information available

##### 8.2.3. Environmental exposure controls

###### Environmental exposure controls:

Avoid release to the environment.

### SECTION 9: Physical and chemical properties

#### 9.1. Information on basic physical and chemical properties

Physical state	: Solid
Colour	: White.
Appearance	: Crystalline powder or crystals.
Molecular mass	: 194,19 g/mol

# CAFFEINE ANHYDROUS EXTRA PURE

## Safety Data Sheet

according to the REACH Regulation (EC) 1907/2006 amended by Regulation (EU) 2020/878

Odour	: Odourless.
Odour threshold	: 29 – 300 ppm
Melting point	: 235 – 237 °C
Freezing point	: Not applicable
Boiling point	: Not available
Flammability	: Non flammable.
Lower explosion limit	: Not applicable
Upper explosion limit	: Not applicable
Flash point	: Not applicable
Auto-ignition temperature	: Not applicable
Decomposition temperature	: Not available
pH	: 5,5 – 6,5
pH solution concentration	: 1 %
Viscosity, kinematic	: Not applicable
Solubility	: Water: 20 g/l at 20°C - Slightly soluble in water.
Partition coefficient n-octanol/water (Log Kow)	: Not available
Partition coefficient n-octanol/water (Log Pow)	: 0,07
Vapour pressure	: 15 mm Hg (89°C)
Vapour pressure at 50 °C	: Not available
Density	: 1,23 g/cm <sup>3</sup> at 18°C
Relative density	: Not available
Relative vapour density at 20 °C	: Not applicable
Particle size	: Not available

## 9.2. Other information

### 9.2.1. Information with regard to physical hazard classes

No additional information available

### 9.2.2. Other safety characteristics

No additional information available

## SECTION 10: Stability and reactivity

### 10.1. Reactivity

The product is non-reactive under normal conditions of use, storage and transport.

### 10.2. Chemical stability

Stable under normal conditions.

### 10.3. Possibility of hazardous reactions

No dangerous reactions known under normal conditions of use.

### 10.4. Conditions to avoid

Air contact. Direct sunlight. Moisture.

### 10.5. Incompatible materials

Oxidizing agent.

### 10.6. Hazardous decomposition products

Under normal conditions of storage and use, hazardous decomposition products should not be produced.

## SECTION 11: Toxicological information

### 11.1. Information on hazard classes as defined in Regulation (EC) No 1272/2008

Acute toxicity (oral)	: Harmful if swallowed.
Acute toxicity (dermal)	: Not classified
Acute toxicity (inhalation)	: Not classified

# CAFFEINE ANHYDROUS EXTRA PURE

## Safety Data Sheet

according to the REACH Regulation (EC) 1907/2006 amended by Regulation (EU) 2020/878

Skin corrosion/irritation	: Not classified pH: 5,5 – 6,5
Serious eye damage/irritation	: Not classified pH: 5,5 – 6,5
Respiratory or skin sensitisation	: Not classified
Germ cell mutagenicity	: Not classified
Carcinogenicity	: Not classified
Reproductive toxicity	: Not classified
STOT-single exposure	: Not classified
STOT-repeated exposure	: Not classified
Aspiration hazard	: Not classified

### CAFFEINE ANHYDROUS EXTRA PURE (58-08-2)

Viscosity, kinematic	Not applicable
----------------------	----------------

## 11.2. Information on other hazards

### 11.2.1. Endocrine disrupting properties

No additional information available

### 11.2.2. Other information

Potential adverse human health effects and symptoms : Harmful if swallowed.

## SECTION 12: Ecological information

### 12.1. Toxicity

Ecology - general	: The product is not considered harmful to aquatic organisms nor to cause long-term adverse effects in the environment.
Hazardous to the aquatic environment, short-term (acute)	: Not classified
Hazardous to the aquatic environment, long-term (chronic)	: Not classified

### 12.2. Persistence and degradability

No additional information available

### 12.3. Bioaccumulative potential

### CAFFEINE ANHYDROUS EXTRA PURE (58-08-2)

Partition coefficient n-octanol/water (Log Pow)	0,07
---	------

### 12.4. Mobility in soil

No additional information available

### 12.5. Results of PBT and vPvB assessment

No additional information available

### 12.6. Endocrine disrupting properties

No additional information available

### 12.7. Other adverse effects

No additional information available

# CAFFEINE ANHYDROUS EXTRA PURE

## Safety Data Sheet

according to the REACH Regulation (EC) 1907/2006 amended by Regulation (EU) 2020/878

### SECTION 13: Disposal considerations

#### 13.1. Waste treatment methods

Waste treatment methods : Dispose of contents/container in accordance with licensed collector's sorting instructions.  
Product/Packaging disposal recommendations : Dispose of contents/container to hazardous or special waste collection point, in accordance with local, regional, national and/or international regulation.

### SECTION 14: Transport information

In accordance with ADR / IMDG / IATA / ADN / RID

#### 14.1. UN number or ID number

UN-No. (ADR) : UN 1544  
UN-No. (IMDG) : UN 1544  
UN-No. (IATA) : UN 1544  
UN-No. (ADN) : UN 1544  
UN-No. (RID) : UN 1544

#### 14.2. UN proper shipping name

Proper Shipping Name (ADR) : ALKALOIDS, SOLID, N.O.S.  
Proper Shipping Name (IMDG) : ALKALOIDS, SOLID, N.O.S.  
Proper Shipping Name (IATA) : Alkaloids, solid, n.o.s.  
Proper Shipping Name (ADN) : ALKALOIDS, SOLID, N.O.S.  
Proper Shipping Name (RID) : ALKALOIDS, SOLID, N.O.S.  
Transport document description (ADR) : UN 1544 ALKALOIDS, SOLID, N.O.S. (CAFFEINE ), 6.1, III, (E)  
Transport document description (IMDG) : UN 1544 ALKALOIDS, SOLID, N.O.S. (CAFFEINE ), 6.1, III  
Transport document description (IATA) : UN 1544 Alkaloids, solid, n.o.s. (CAFFEINE ), 6.1, III  
Transport document description (ADN) : UN 1544 ALKALOIDS, SOLID, N.O.S., 6.1, III  
Transport document description (RID) : UN 1544 ALKALOIDS, SOLID, N.O.S., 6.1, III

#### 14.3. Transport hazard class(es)

##### ADR

Transport hazard class(es) (ADR) : 6.1  
Danger labels (ADR) : 6.1



##### IMDG

Transport hazard class(es) (IMDG) : 6.1  
Danger labels (IMDG) : 6.1



##### IATA

Transport hazard class(es) (IATA) : 6.1  
Danger labels (IATA) : 6.1



##### ADN

Transport hazard class(es) (ADN) : 6.1

# CAFFEINE ANHYDROUS EXTRA PURE

## Safety Data Sheet

according to the REACH Regulation (EC) 1907/2006 amended by Regulation (EU) 2020/878

Danger labels (ADN) : 6.1

:



### RID

Transport hazard class(es) (RID) : 6.1

Danger labels (RID) : 6.1

:



### 14.4. Packing group

Packing group (ADR) : III

Packing group (IMDG) : III

Packing group (IATA) : III

Packing group (ADN) : III

Packing group (RID) : III

### 14.5. Environmental hazards

Dangerous for the environment : No

Marine pollutant : No

Other information : No supplementary information available

### 14.6. Special precautions for user

#### Overland transport

Classification code (ADR) : T2

Special provisions (ADR) : 43, 274

Limited quantities (ADR) : 5kg

Excepted quantities (ADR) : E1

Packing instructions (ADR) : P002, IBC08, LP02, R001

Special packing provisions (ADR) : B3

Mixed packing provisions (ADR) : MP10

Portable tank and bulk container instructions (ADR) : T1

Portable tank and bulk container special provisions (ADR) : TP33

Tank code (ADR) : SGAH, L4BH

Tank special provisions (ADR) : TU15, TE19

Vehicle for tank carriage : AT

Transport category (ADR) : 2

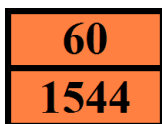
Special provisions for carriage - Bulk (ADR) : VC1, VC2, AP7

Special provisions for carriage - Loading, unloading and handling (ADR) : CV13, CV28

Special provisions for carriage - Operation (ADR) : S9

Hazard identification number (Kemler No.) : 60

Orange plates :



Tunnel restriction code (ADR) : E

EAC code : 2X

#### Transport by sea

Special provisions (IMDG) : 43, 223, 274

Limited quantities (IMDG) : 5 kg

Excepted quantities (IMDG) : E1

Packing instructions (IMDG) : P002, LP02

IBC packing instructions (IMDG) : IBC08



# CAFFEINE ANHYDROUS EXTRA PURE

## Safety Data Sheet

according to the REACH Regulation (EC) 1907/2006 amended by Regulation (EU) 2020/878

IBC special provisions (IMDG)	: B3
Tank instructions (IMDG)	: T1
Tank special provisions (IMDG)	: TP33
EmS-No. (Fire)	: F-A
EmS-No. (Spillage)	: S-A
Stowage category (IMDG)	: A
Properties and observations (IMDG)	: A wide range of toxic solids, generally of vegetable origin. Toxic if swallowed, by skin contact or by inhalation.
MFAG-No	: 151

### Air transport

PCA Excepted quantities (IATA)	: E1
PCA Limited quantities (IATA)	: Y645
PCA limited quantity max net quantity (IATA)	: 10kg
PCA packing instructions (IATA)	: 670
PCA max net quantity (IATA)	: 100kg
CAO packing instructions (IATA)	: 677
CAO max net quantity (IATA)	: 200kg
Special provisions (IATA)	: A3, A5, A6, A801
ERG code (IATA)	: 6L

### Inland waterway transport

Classification code (ADN)	: T2
Special provisions (ADN)	: 43, 274, 802
Limited quantities (ADN)	: 5 kg
Excepted quantities (ADN)	: E1
Equipment required (ADN)	: PP, EP
Number of blue cones/lights (ADN)	: 0

### Rail transport

Classification code (RID)	: T2
Special provisions (RID)	: 43, 274
Limited quantities (RID)	: 5kg
Excepted quantities (RID)	: E1
Packing instructions (RID)	: P002, IBC08, LP02, R001
Special packing provisions (RID)	: B3
Mixed packing provisions (RID)	: MP10
Portable tank and bulk container instructions (RID)	: T1
Portable tank and bulk container special provisions (RID)	: TP33
Tank codes for RID tanks (RID)	: SGAH, L4BH
Special provisions for RID tanks (RID)	: TU15
Transport category (RID)	: 2
Special provisions for carriage – Bulk (RID)	: VC1, VC2, AP7
Special provisions for carriage - Loading, unloading and handling (RID)	: CW13, CW28, CW31
Colis express (express parcels) (RID)	: CE11
Hazard identification number (RID)	: 60

### 14.7. Maritime transport in bulk according to IMO instruments

Not applicable

## SECTION 15: Regulatory information

### 15.1. Safety, health and environmental regulations/legislation specific for the substance or mixture

#### 15.1.1. EU-Regulations

##### REACH Annex XVII (Restriction List)

No REACH Annex XVII restrictions

# CAFFEINE ANHYDROUS EXTRA PURE

## Safety Data Sheet

according to the REACH Regulation (EC) 1907/2006 amended by Regulation (EU) 2020/878

### REACH Annex XIV (Authorisation List)

CAFFEINE ANHYDROUS EXTRA PURE is not on the REACH Annex XIV List

### REACH Candidate List (SVHC)

CAFFEINE ANHYDROUS EXTRA PURE is not on the REACH Candidate List

### PIC Regulation (Prior Informed Consent)

CAFFEINE ANHYDROUS EXTRA PURE is not subject to Regulation (EU) No 649/2012 of the European Parliament and of the Council of 4 July 2012 concerning the export and import of hazardous chemicals.

### POP Regulation (Persistent Organic Pollutants)

CAFFEINE ANHYDROUS EXTRA PURE is not subject to Regulation (EU) No 2019/1021 of the European Parliament and of the Council of 20 June 2019 on persistent organic pollutants

### Ozone Regulation (1005/2009)

CAFFEINE ANHYDROUS is not subject to REGULATION (EU) No 1005/2009 OF THE EUROPEAN PARLIAMENT AND OF THE COUNCIL of 16 September 2009 on substances that deplete the ozone layer.

### Explosives Precursors Regulation (2019/1148)

Contains no substance subject to Regulation (EU) 2019/1148 of the European Parliament and of the Council of 20 June 2019 on the marketing and use of explosives precursors.

### Drug Precursors Regulation (273/2004)

Contains no substance(s) listed on the Drug Precursors list (Regulation EC 273/2004 on drug precursors)

### 15.1.2. National regulations

#### Germany

Water hazard class (WGK) : WGK 1, Slightly hazardous to water (Classification according to AwSV; ID No. 3214).  
Hazardous Incident Ordinance (12. BImSchV) : Is not subject of the Hazardous Incident Ordinance (12. BImSchV)

#### Netherlands

SZW-lijst van kankerverwekkende stoffen : The substance is not listed  
SZW-lijst van mutagene stoffen : The substance is not listed  
SZW-lijst van reprotoxische stoffen – Borstvoeding : The substance is not listed  
SZW-lijst van reprotoxische stoffen – Vruchtbaarheid : The substance is not listed  
SZW-lijst van reprotoxische stoffen – Ontwikkeling : The substance is not listed

#### Denmark

MAL code : 00-3 (Executive Order No. 301 (1993))  
Danish National Regulations : Young people below the age of 18 years are not allowed to use the product

### 15.2. Chemical safety assessment

No chemical safety assessment has been carried out

## SECTION 16: Other information

### Abbreviations and acronyms:

ADN	European Agreement concerning the International Carriage of Dangerous Goods by Inland Waterways
ADR	European Agreement concerning the International Carriage of Dangerous Goods by Road
ATE	Acute Toxicity Estimate
BCF	Bioconcentration factor
BLV	Biological limit value
BOD	Biochemical oxygen demand (BOD)
COD	Chemical oxygen demand (COD)
DMEL	Derived Minimal Effect level

# CAFFEINE ANHYDROUS EXTRA PURE

## Safety Data Sheet

according to the REACH Regulation (EC) 1907/2006 amended by Regulation (EU) 2020/878

Abbreviations and acronyms:	
DNEL	Derived-No Effect Level
EC-No.	European Community number
EC50	Median effective concentration
EN	European Standard
IARC	International Agency for Research on Cancer
IATA	International Air Transport Association
IMDG	International Maritime Dangerous Goods
LC50	Median lethal concentration
LD50	Median lethal dose
LOAEL	Lowest Observed Adverse Effect Level
NOAEC	No-Observed Adverse Effect Concentration
NOAEL	No-Observed Adverse Effect Level
NOEC	No-Observed Effect Concentration
OECD	Organisation for Economic Co-operation and Development
OEL	Occupational Exposure Limit
PBT	Persistent Bioaccumulative Toxic
PNEC	Predicted No-Effect Concentration
RID	Regulations concerning the International Carriage of Dangerous Goods by Rail
SDS	Safety Data Sheet
STP	Sewage treatment plant
ThOD	Theoretical oxygen demand (ThOD)
TLM	Median Tolerance Limit
VOC	Volatile Organic Compounds
CAS-No.	Chemical Abstract Service number
N.O.S.	Not Otherwise Specified
vPvB	Very Persistent and Very Bioaccumulative
ED	Endocrine disrupting properties

Full text of H- and EUH-statements:	
Acute Tox. 4 (Oral)	Acute toxicity (oral), Category 4
H302	Harmful if swallowed.

Safety Data Sheet (SDS), EU

This information is based on our current knowledge and is intended to describe the product for the purposes of health, safety and environmental requirements only. It should not therefore be construed as guaranteeing any specific property of the product.