

CUPRIC SULPHATE PENTAHYDRATE EXTRA PURE

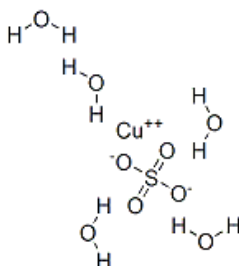
Safety Data Sheet

according to the REACH Regulation (EC) 1907/2006 amended by Regulation (EU) 2020/878
SDS Reference Number: 03079
Issue date: 7/8/2024 Revision date: 7/8/2024 Supersedes version of: 5/24/2016 Version: 1.0

SECTION 1: Identification of the substance/mixture and of the company/undertaking

1.1. Product identifier

Product form : Substance
Trade name : CUPRIC SULPHATE PENTAHYDRATE EXTRA PURE
EC Index-No. : 029-023-00-4
EC-No. : 231-847-6
CAS-No. : 7758-99-8
Product code : 03079
Type of product : Inorganic compound
Formula : $\text{CuSO}_4 \cdot 5\text{H}_2\text{O}$
Chemical structure :



Synonyms : Copper (II) sulphate Pentahydrate, Blue vitriol, Bluestone

1.2. Relevant identified uses of the substance or mixture and uses advised against

Relevant identified uses

Industrial/Professional use spec : Industrial
For professional use only
Use of the substance/mixture : Laboratory chemicals
Manufacture of substances

1.3. Details of the supplier of the safety data sheet

LOBA CHEMIE PVT.LTD.
107 Wode House Road, Jehangir Villa, Colaba
400005 Mumbai
INDIA
T +91 22 6663 6663, F +91 22 6663 6699
info@lobachemie.com, www.lobachemie.com

1.4. Emergency telephone number

Emergency number : + 91 22 6663 6663 (9:00am - 6:00 pm)

SECTION 2: Hazards identification

2.1. Classification of the substance or mixture

Classification according to Regulation (EC) No. 1272/2008 [CLP]

Acute toxicity (oral), Category 4 H302
Serious eye damage/eye irritation, Category 1 H318
Hazardous to the aquatic environment – Acute Hazard, Category 1 H400
Hazardous to the aquatic environment – Chronic Hazard, Category 1 H410

Full text of H- and EUH-statements: see section 16

CUPRIC SULPHATE PENTAHYDRATE EXTRA PURE

Safety Data Sheet

according to the REACH Regulation (EC) 1907/2006 amended by Regulation (EU) 2020/878

Adverse physicochemical, human health and environmental effects

Harmful if swallowed. Causes serious eye damage. Very toxic to aquatic life with long lasting effects.

2.2. Label elements

Labelling according to Regulation (EC) No. 1272/2008 [CLP]

Hazard pictograms (CLP)



GHS05

GHS07

GHS09

Signal word (CLP)

: Danger

Hazard statements (CLP)

: H302 - Harmful if swallowed.
H318 - Causes serious eye damage.
H410 - Very toxic to aquatic life with long lasting effects.

Precautionary statements (CLP)

: P273 - Avoid release to the environment.
P301+P312 - IF SWALLOWED: Call a POISON CENTRE or doctor if you feel unwell.
P305+P351+P338 - IF IN EYES: Rinse cautiously with water for several minutes. Remove contact lenses, if present and easy to do. Continue rinsing.
P391 - Collect spillage.

2.3. Other hazards

Contains no PBT and/or vPvB substances $\geq 0.1\%$ assessed in accordance with REACH Annex XIII

SECTION 3: Composition/information on ingredients

3.1. Substances

Substance type

: Mono-constituent

Name	Product identifier	%
CUPRIC SULPHATE PENTAHYDRATE	CAS-No.: 7758-99-8 EC-No.: 231-847-6 EC Index-No.: 029-023-00-4	100

SECTION 4: First aid measures

4.1. Description of first aid measures

First-aid measures general

: Call a poison center or a doctor if you feel unwell.

First-aid measures after inhalation

: Remove person to fresh air and keep comfortable for breathing. Allow affected person to breathe fresh air. If breathing is difficult, remove victim to fresh air and keep at rest in a position comfortable for breathing.

First-aid measures after skin contact

: Wash with plenty of water/... Wash contaminated clothing before reuse. Get medical advice/attention. Wash skin with plenty of water.

First-aid measures after eye contact

: Rinse cautiously with water for several minutes. Remove contact lenses, if present and easy to do. Continue rinsing. Get medical advice/attention. Call a physician immediately.

First-aid measures after ingestion

: Rinse mouth. Call a POISON CENTER/doctor if you feel unwell. Call a poison center or a doctor if you feel unwell.

First-aid measures for first aider

: First aid workers will be equipped with suitable personal protective equipment.

4.2. Most important symptoms and effects, both acute and delayed

Symptoms/effects after inhalation

: Dust of the product, if present, may cause respiratory irritation after an excessive inhalation exposure. Although no appropriate human or animal health effects data are known to exist, this material is expected to be an inhalation hazard.

Symptoms/effects after skin contact

: Causes skin irritation.

Symptoms/effects after eye contact

: Causes serious eye irritation. Serious damage to eyes.

Symptoms/effects after ingestion

: Harmful if swallowed.

CUPRIC SULPHATE PENTAHYDRATE EXTRA PURE

Safety Data Sheet

according to the REACH Regulation (EC) 1907/2006 amended by Regulation (EU) 2020/878

4.3. Indication of any immediate medical attention and special treatment needed

Treat symptomatically.

SECTION 5: Firefighting measures

5.1. Extinguishing media

Suitable extinguishing media : Carbon dioxide. Dry powder. Foam. Water spray.
Unsuitable extinguishing media : Do not use a heavy water stream.

5.2. Special hazards arising from the substance or mixture

Fire hazard : No fire hazard.
Explosion hazard : No direct explosion hazard.
Hazardous decomposition products in case of fire : Toxic fumes may be released.

5.3. Advice for firefighters

Firefighting instructions : Fight fire from safe distance and protected location. Do not enter fire area without proper protective equipment, including respiratory protection.
Protection during firefighting : Do not enter fire area without proper protective equipment, including respiratory protection. Do not attempt to take action without suitable protective equipment. Self-contained breathing apparatus. Complete protective clothing.

SECTION 6: Accidental release measures

6.1. Personal precautions, protective equipment and emergency procedures

General measures : Notify authorities if product enters sewers or public waters. Absorb spillage to prevent material damage.

For non-emergency personnel

Protective equipment : Wear recommended personal protective equipment.
Emergency procedures : Ventilate spillage area. Evacuate unnecessary personnel. Avoid contact with skin and eyes.

For emergency responders

Protective equipment : Do not attempt to take action without suitable protective equipment. Use personal protective equipment as required. For further information refer to section 8: "Exposure controls/personal protection".
Emergency procedures : Ventilate area. Evacuate unnecessary personnel.

6.2. Environmental precautions

Avoid release to the environment.

6.3. Methods and material for containment and cleaning up

For containment : Collect spillage.
Methods for cleaning up : Mechanically recover the product. Soak up spills with inert solids, such as clay or diatomaceous earth as soon as possible. On land, sweep or shovel into suitable containers.
Other information : Dispose of materials or solid residues at an authorized site.

6.4. Reference to other sections

For further information refer to section 13.

SECTION 7: Handling and storage

7.1. Precautions for safe handling

Additional hazards when processed : Not expected to present a significant hazard under anticipated conditions of normal use.

CUPRIC SULPHATE PENTAHYDRATE EXTRA PURE

Safety Data Sheet

according to the REACH Regulation (EC) 1907/2006 amended by Regulation (EU) 2020/878

Precautions for safe handling	: Ensure good ventilation of the work station. Avoid contact with skin and eyes. Do not breathe vapours. Provide good ventilation in process area to prevent formation of vapour. Wear personal protective equipment.
Hygiene measures	: Do not eat, drink or smoke when using this product. Wash hands and other exposed areas with mild soap and water before eating, drinking or smoking and when leaving work. Always wash hands after handling the product.

7.2. Conditions for safe storage, including any incompatibilities

Technical measures	: Keep in a cool, well-ventilated place away from heat.
Storage conditions	: Store in a well-ventilated place. Keep container tightly closed.
Packaging materials	: Store always product in container of same material as original container.

7.3. Specific end use(s)

No additional information available

SECTION 8: Exposure controls/personal protection

8.1. Control parameters

No additional information available

8.2. Exposure controls

Appropriate engineering controls

Appropriate engineering controls:

Ensure good ventilation of the work station.

Personal protection equipment

Personal protective equipment:

Wear recommended personal protective equipment.

Personal protective equipment symbol(s):



Eye and face protection

Eye protection:

Chemical goggles or safety glasses

Skin protection

Skin and body protection:

Wear a mask

Hand protection:

Protective gloves

Respiratory protection

Respiratory protection:

Wear appropriate mask

Environmental exposure controls

Environmental exposure controls:

Avoid release to the environment.

SECTION 9: Physical and chemical properties

9.1. Information on basic physical and chemical properties

Physical state	: Solid
Colour	: Blue.

CUPRIC SULPHATE PENTAHYDRATE EXTRA PURE

Safety Data Sheet

according to the REACH Regulation (EC) 1907/2006 amended by Regulation (EU) 2020/878

Appearance	: Crystalline powder.
Molecular mass	: 249.68 g/mol
Odour	: Odourless.
Odour threshold	: Not available
Melting point	: 110 °C
Freezing point	: Not applicable
Boiling point	: Not available
Flammability	: Not available
Lower explosion limit	: Not applicable
Upper explosion limit	: Not applicable
Flash point	: Not applicable
Auto-ignition temperature	: Not applicable
Decomposition temperature	: > 110 °C
pH	: 3.7 – 4.5 at 25 °C
pH solution concentration	: 5 %
Viscosity, kinematic	: Not applicable
Solubility	: Water: 31.6 g/100cm ³ at 0 °C
Partition coefficient n-octanol/water (Log Kow)	: Not available
Vapour pressure	: 7.3 mm Hg at 25 °C
Vapour pressure at 50 °C	: Not available
Density	: 2.286 g/cm ³
Relative density	: Not available
Relative vapour density at 20 °C	: Not applicable
Particle size	: Not available

9.2. Other information

No additional information available

SECTION 10: Stability and reactivity

10.1. Reactivity

The product is non-reactive under normal conditions of use, storage and transport.

10.2. Chemical stability

Stable under normal conditions.

10.3. Possibility of hazardous reactions

No dangerous reactions known under normal conditions of use.

10.4. Conditions to avoid

Air contact. Direct sunlight. Moisture.

10.5. Incompatible materials

No additional information available

10.6. Hazardous decomposition products

Under normal conditions of storage and use, hazardous decomposition products should not be produced.

SECTION 11: Toxicological information

11.1. Information on hazard classes as defined in Regulation (EC) No 1272/2008

Acute toxicity (oral)	: Harmful if swallowed.
Acute toxicity (dermal)	: Not classified
Acute toxicity (inhalation)	: Not classified
Skin corrosion/irritation	: Not classified
	pH: 3.7 – 4.5 at 25 °C

CUPRIC SULPHATE PENTAHYDRATE EXTRA PURE

Safety Data Sheet

according to the REACH Regulation (EC) 1907/2006 amended by Regulation (EU) 2020/878

Serious eye damage/irritation	: Causes serious eye damage. pH: 3.7 – 4.5 at 25 °C
Respiratory or skin sensitisation	: Not classified
Germ cell mutagenicity	: Not classified
Carcinogenicity	: Not classified
Reproductive toxicity	: Not classified
STOT-single exposure	: Not classified
STOT-repeated exposure	: Not classified
Aspiration hazard	: Not classified

CUPRIC SULPHATE PENTAHYDRATE EXTRA PURE (7758-99-8)

Viscosity, kinematic	Not applicable
----------------------	----------------

11.2. Information on other hazards

Other information

Potential adverse human health effects and symptoms	: Harmful if swallowed.
---	-------------------------

SECTION 12: Ecological information

12.1. Toxicity

Ecology - general	: Very toxic to aquatic life with long lasting effects.
Ecology - water	: Very toxic to aquatic life with long lasting effects.
Hazardous to the aquatic environment, short-term (acute)	: Very toxic to aquatic life.
Hazardous to the aquatic environment, long-term (chronic)	: Very toxic to aquatic life with long lasting effects.

12.2. Persistence and degradability

CUPRIC SULPHATE PENTAHYDRATE EXTRA PURE (7758-99-8)

Persistence and degradability	Rapidly degradable
-------------------------------	--------------------

12.3. Bioaccumulative potential

No additional information available

12.4. Mobility in soil

No additional information available

12.5. Results of PBT and vPvB assessment

No additional information available

12.6. Endocrine disrupting properties

No additional information available

12.7. Other adverse effects

No additional information available

SECTION 13: Disposal considerations

13.1. Waste treatment methods

Regional waste regulation	: Disposal must be done according to official regulations.
Waste treatment methods	: Dispose of contents/container in accordance with licensed collector's sorting instructions.
Sewage disposal recommendations	: Disposal must be done according to official regulations.

CUPRIC SULPHATE PENTAHYDRATE EXTRA PURE

Safety Data Sheet

according to the REACH Regulation (EC) 1907/2006 amended by Regulation (EU) 2020/878

Product/Packaging disposal recommendations	: Dispose of contents/container to hazardous or special waste collection point, in accordance with local, regional, national and/or international regulation. Disposal must be done according to official regulations.
Additional information	: Do not re-use empty containers.

SECTION 14: Transport information

In accordance with ADR / IMDG / IATA / ADN / RID

14.1. UN number or ID number

UN-No. (ADR)	: UN 3077
UN-No. (IMDG)	: UN 3077
UN-No. (IATA)	: UN 3077
UN-No. (ADN)	: UN 3077
UN-No. (RID)	: UN 3077

14.2. UN proper shipping name

Proper Shipping Name (ADR)	: ENVIRONMENTALLY HAZARDOUS SUBSTANCE, SOLID, N.O.S.
Proper Shipping Name (IMDG)	: ENVIRONMENTALLY HAZARDOUS SUBSTANCE, SOLID, N.O.S.
Proper Shipping Name (IATA)	: Environmentally hazardous substance, solid, n.o.s.
Proper Shipping Name (ADN)	: ENVIRONMENTALLY HAZARDOUS SUBSTANCE, SOLID, N.O.S.
Proper Shipping Name (RID)	: ENVIRONMENTALLY HAZARDOUS SUBSTANCE, SOLID, N.O.S.
Transport document description (ADR)	: UN 3077 ENVIRONMENTALLY HAZARDOUS SUBSTANCE, SOLID, N.O.S. (CUPRIC SULPHATE PENTAHYDRATE), 9, III, (-)
Transport document description (IMDG)	: UN 3077 ENVIRONMENTALLY HAZARDOUS SUBSTANCE, SOLID, N.O.S., 9, III, MARINE POLLUTANT
Transport document description (IATA)	: UN 3077 Environmentally hazardous substance, solid, n.o.s. (CUPRIC SULPHATE PENTAHYDRATE), 9, III
Transport document description (ADN)	: UN 3077 ENVIRONMENTALLY HAZARDOUS SUBSTANCE, SOLID, N.O.S., 9, III
Transport document description (RID)	: UN 3077 ENVIRONMENTALLY HAZARDOUS SUBSTANCE, SOLID, N.O.S., 9, III

14.3. Transport hazard class(es)

ADR

Transport hazard class(es) (ADR)	: 9
Danger labels (ADR)	: 9



IMDG

Transport hazard class(es) (IMDG)	: 9
Danger labels (IMDG)	: 9



IATA

Transport hazard class(es) (IATA)	: 9
Danger labels (IATA)	: 9



ADN

Transport hazard class(es) (ADN)	: 9
----------------------------------	-----

CUPRIC SULPHATE PENTAHYDRATE EXTRA PURE

Safety Data Sheet

according to the REACH Regulation (EC) 1907/2006 amended by Regulation (EU) 2020/878

Danger labels (ADN) : 9



RID

Transport hazard class(es) (RID) : 9

Danger labels (RID) : 9



14.4. Packing group

Packing group (ADR) : III

Packing group (IMDG) : III

Packing group (IATA) : III

Packing group (ADN) : III

Packing group (RID) : III

14.5. Environmental hazards

Dangerous for the environment : Yes

Marine pollutant : Yes

EmS-No. (Fire) : F-A

EmS-No. (Spillage) : S-F

Other information : No supplementary information available

14.6. Special precautions for user

Overland transport

Classification code (ADR) : M7

Special provisions (ADR) : 274, 335, 375, 601

Limited quantities (ADR) : 5kg

Excepted quantities (ADR) : E1

Packing instructions (ADR) : P002, IBC08, LP02, R001

Special packing provisions (ADR) : PP12, B3

Mixed packing provisions (ADR) : MP10

Portable tank and bulk container instructions (ADR) : T1, BK1, BK2, BK3

Portable tank and bulk container special provisions (ADR) : TP33

Tank code (ADR) : SGAV, LGBV

Vehicle for tank carriage : AT

Transport category (ADR) : 3

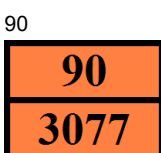
Special provisions for carriage - Packages (ADR) : V13

Special provisions for carriage - Bulk (ADR) : VC1, VC2

Special provisions for carriage - Loading, unloading and handling (ADR) : CV13

Hazard identification number (Kemler No.) : 90

Orange plates :



Tunnel restriction code (ADR) : -

EAC code : 2Z

Transport by sea

Special provisions (IMDG) : 274, 335, 966, 967, 969

Limited quantities (IMDG) : 5 kg

Excepted quantities (IMDG) : E1

Packing instructions (IMDG) : LP02, P002

CUPRIC SULPHATE PENTAHYDRATE EXTRA PURE

Safety Data Sheet

according to the REACH Regulation (EC) 1907/2006 amended by Regulation (EU) 2020/878

Special packing provisions (IMDG)	: PP12
IBC packing instructions (IMDG)	: IBC08
IBC special provisions (IMDG)	: B3
Tank instructions (IMDG)	: BK1, BK2, BK3, T1
Tank special provisions (IMDG)	: TP33
Stowage category (IMDG)	: A
Stowage and handling (IMDG)	: SW23
MFAG-No	: 171

Air transport

PCA Excepted quantities (IATA)	: E1
PCA Limited quantities (IATA)	: Y956
PCA limited quantity max net quantity (IATA)	: 30kgG
PCA packing instructions (IATA)	: 956
PCA max net quantity (IATA)	: 400kg
CAO packing instructions (IATA)	: 956
CAO max net quantity (IATA)	: 400kg
Special provisions (IATA)	: A97, A158, A179, A197, A215
ERG code (IATA)	: 9L

Inland waterway transport

Classification code (ADN)	: M7
Special provisions (ADN)	: 274, 335, 375, 601
Limited quantities (ADN)	: 5 kg
Excepted quantities (ADN)	: E1
Carriage permitted (ADN)	: T* B**
Equipment required (ADN)	: PP, A
Number of blue cones/lights (ADN)	: 0
Additional requirements/Remarks (ADN)	: * Only in the molten state. ** For carriage in bulk see also 7.1.4.1. *** Only in the case of transport in bulk.

Rail transport

Classification code (RID)	: M7
Special provisions (RID)	: 274, 335, 375, 601
Limited quantities (RID)	: 5kg
Excepted quantities (RID)	: E1
Packing instructions (RID)	: P002, IBC08, LP02, R001
Special packing provisions (RID)	: PP12, B3
Mixed packing provisions (RID)	: MP10
Portable tank and bulk container instructions (RID)	: T1, BK1, BK2, BK3
Portable tank and bulk container special provisions (RID)	: TP33
Tank codes for RID tanks (RID)	: SGAV, LGBV
Transport category (RID)	: 3
Special provisions for carriage – Packages (RID)	: W13
Special provisions for carriage – Bulk (RID)	: VC1, VC2
Special provisions for carriage - Loading, unloading and handling (RID)	: CW13, CW31
Colis express (express parcels) (RID)	: CE11
Hazard identification number (RID)	: 90

14.7. Maritime transport in bulk according to IMO instruments

Not applicable

SECTION 15: Regulatory information

15.1. Safety, health and environmental regulations/legislation specific for the substance or mixture

EU-Regulations

REACH Annex XVII (Restriction List)

Not listed on REACH Annex XVII

CUPRIC SULPHATE PENTAHYDRATE EXTRA PURE

Safety Data Sheet

according to the REACH Regulation (EC) 1907/2006 amended by Regulation (EU) 2020/878

REACH Annex XIV (Authorisation List)

Not listed on REACH Annex XIV (Authorisation List)

REACH Candidate List (SVHC)

Not listed on the REACH Candidate List

PIC Regulation (Prior Informed Consent)

Not listed on the PIC list (Regulation EU 649/2012)

POP Regulation (Persistent Organic Pollutants)

Not listed on the POP list (Regulation EU 2019/1021)

Ozone Regulation (1005/2009)

Not listed on the Ozone Depletion list (Regulation EU 1005/2009)

Dual-Use Regulation (428/2009)

Contains no substance subject to the COUNCIL REGULATION (EC) No 428/2009 of 5 May 2009 setting up a Community regime for the control of exports, transfer, brokering and transit of dual-use items.

Explosives Precursors Regulation (2019/1148)

Contains no substance(s) listed on the Explosives Precursors list (Regulation EU 2019/1148 on the marketing and use of explosives precursors)

Drug Precursors Regulation (273/2004)

Contains no substance(s) listed on the Drug Precursors list (Regulation EC 273/2004 on the manufacture and the placing on market of certain substances used in the illicit manufacture of narcotic drugs and psychotropic substances)

National regulations

Germany

Water hazard class (WGK) : WGK 3, Highly hazardous to water (Classification according to AwSV).

Hazardous Incident Ordinance (12. BImSchV) : Is not subject to the Hazardous Incident Ordinance (12. BImSchV)

Netherlands

SZW-lijst van kankerverwekkende stoffen : The substance is not listed

SZW-lijst van mutagene stoffen : The substance is not listed

SZW-lijst van reprotoxische stoffen – Borstvoeding : The substance is not listed

SZW-lijst van reprotoxische stoffen –

Vruchtbaarheid

SZW-lijst van reprotoxische stoffen – Ontwikkeling : The substance is not listed

Denmark

Danish National Regulations : Young people below the age of 18 years are not allowed to use the product

15.2. Chemical safety assessment

No chemical safety assessment has been carried out

SECTION 16: Other information

Abbreviations and acronyms:

ADN	European Agreement concerning the International Carriage of Dangerous Goods by Inland Waterways
ADR	European Agreement concerning the International Carriage of Dangerous Goods by Road
ATE	Acute Toxicity Estimate
BCF	Bioconcentration factor
BLV	Biological limit value
BOD	Biochemical oxygen demand (BOD)
COD	Chemical oxygen demand (COD)
DMEL	Derived Minimal Effect level

CUPRIC SULPHATE PENTAHYDRATE EXTRA PURE

Safety Data Sheet

according to the REACH Regulation (EC) 1907/2006 amended by Regulation (EU) 2020/878

Abbreviations and acronyms:	
DNEL	Derived-No Effect Level
EC-No.	European Community number
EC50	Median effective concentration
EN	European Standard
IARC	International Agency for Research on Cancer
IATA	International Air Transport Association
IMDG	International Maritime Dangerous Goods
LC50	Median lethal concentration
LD50	Median lethal dose
LOAEL	Lowest Observed Adverse Effect Level
NOAEC	No-Observed Adverse Effect Concentration
NOAEL	No-Observed Adverse Effect Level
NOEC	No-Observed Effect Concentration
OECD	Organisation for Economic Co-operation and Development
OEL	Occupational Exposure Limit
PBT	Persistent Bioaccumulative Toxic
PNEC	Predicted No-Effect Concentration
RID	Regulations concerning the International Carriage of Dangerous Goods by Rail
SDS	Safety Data Sheet
STP	Sewage treatment plant
ThOD	Theoretical oxygen demand (ThOD)
TLM	Median Tolerance Limit
VOC	Volatile Organic Compounds
CAS-No.	Chemical Abstract Service number
N.O.S.	Not Otherwise Specified
vPvB	Very Persistent and Very Bioaccumulative
ED	Endocrine disruptor

Full text of H- and EUH-statements:	
Acute Tox. 4 (Oral)	Acute toxicity (oral), Category 4
Aquatic Acute 1	Hazardous to the aquatic environment – Acute Hazard, Category 1
Aquatic Chronic 1	Hazardous to the aquatic environment – Chronic Hazard, Category 1
Eye Dam. 1	Serious eye damage/eye irritation, Category 1
H302	Harmful if swallowed.
H318	Causes serious eye damage.
H400	Very toxic to aquatic life.
H410	Very toxic to aquatic life with long lasting effects.

Safety Data Sheet (SDS), EU

This information is based on our current knowledge and is intended to describe the product for the purposes of health, safety and environmental requirements only. It should not therefore be construed as guaranteeing any specific property of the product.