

ETHYLENE DIAMINE TETRA ACETIC ACID (EDTA) EXTRA PURE MSDS

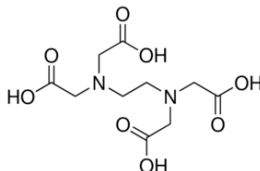
CAS-No.: 60-00-4 MSDS

MATERIAL SAFETY DATA SHEET (MSDS)

SECTION 1: Identification of the substance/mixture and of the company/undertaking

1.1. Product identifier

Product form : Substance
:
EC Index-No. : 607-429-00-8
EC-No. : 200-449-4
CAS-No. : 60-00-4
Product code : 03727
Formula : C₁₀H₁₆N₂O₈
Chemical structure :



Synonyms : EDTA

1.2. Relevant identified uses of the substance or mixture and uses advised against

1.2.1. Relevant identified uses

Industrial/Professional use spec : Industrial
For professional use only

1.2.2. Uses advised against

No additional information available

1.3. Details of the supplier of the safety data sheet

LOBA CHEMIE PVT.LTD.
107 Wode House Road, Jehangir Villa, Colaba
400005 Mumbai - INDIA
T +91 22 6663 6663 - F +91 22 6663 6699
info@lobachemie.com - www.lobachemie.com

1.4. Emergency telephone number

Emergency number : + 91 22 6663 6663 (9:00am - 6:00 pm)

SECTION 2: Hazards identification

2.1. Classification of the substance or mixture

Classification according to Regulation (EC) No. 1272/2008 [CLP]

Serious eye damage/eye irritation, Category 2 H319

Full text of H statements : see section 16

ETHYLENE DIAMINE TETRA ACETIC ACID (EDTA) Extra Pure

Safety Data Sheet

Classification according to Directive 67/548/EEC [DSD] or 1999/45/EC [DPD]

Xn; R36-52-53

Full text of R-phrases: see section 16

Adverse physicochemical, human health and environmental effects

No additional information available

2.2. Label elements

Labelling according to Regulation (EC) No. 1272/2008 [CLP]

Hazard pictograms (CLP) :



GHS07

Signal word (CLP) : Warning

Hazard statements (CLP) : H319 - Causes serious eye irritation.

Precautionary statements (CLP) : P305+P351+P338 - IF IN EYES: Rinse cautiously with water for several minutes. Remove contact lenses, if present and easy to do. Continue rinsing.

2.3. Other hazards

No additional information available

SECTION 3: Composition/information on ingredients

3.1. Substances

Name : ETHYLENE DIAMINE TETRA ACETIC ACID (EDTA) Extra Pure
CAS-No. : 60-00-4
EC-No. : 200-449-4
EC Index-No. : 607-429-00-8

Full text of R- and H-statements: see section 16

3.2. Mixtures

Not applicable

SECTION 4: First aid measures

4.1. Description of first aid measures

First-aid measures after inhalation : Assure fresh air breathing. Allow the victim to rest.
First-aid measures after skin contact : Wash with plenty of water/.... Wash contaminated clothing before reuse.
First-aid measures after eye contact : Rinse cautiously with water for several minutes. Remove contact lenses, if present and easy to do. Continue rinsing. Get medical advice/attention.

ETHYLENE DIAMINE TETRA ACETIC ACID (EDTA) Extra Pure

Safety Data Sheet

First-aid measures after ingestion : Rinse mouth. Do not induce vomiting. Get medical advice/attention.

4.2. Most important symptoms and effects, both acute and delayed

Symptoms/effects after eye contact : Causes serious eye irritation.

4.3. Indication of any immediate medical attention and special treatment needed

Treat symptomatically.

SECTION 5: Firefighting measures

5.1. Extinguishing media

Suitable extinguishing media : Dry powder. Water spray. Carbon dioxide. Foam.

Unsuitable extinguishing media : Do not use a heavy water stream.

5.2. Special hazards arising from the substance or mixture

No additional information available

5.3. Advice for firefighters

Protection during firefighting : Do not enter fire area without proper protective equipment, including respiratory protection.

SECTION 6: Accidental release measures

6.1. Personal precautions, protective equipment and emergency procedures

6.1.1. For non-emergency personnel

Emergency procedures : Evacuate unnecessary personnel.

6.1.2. For emergency responders

Protective equipment : Use personal protective equipment as required.

Emergency procedures : Ventilate area.

6.2. Environmental precautions

Avoid release to the environment.

6.3. Methods and material for containment and cleaning up

Methods for cleaning up : Collect spillage. On land, sweep or shovel into suitable containers. Soak up spills with inert solids, such as clay or diatomaceous earth as soon as possible.

6.4. Reference to other sections

No additional information available

SECTION 7: Handling and storage

7.1. Precautions for safe handling

Precautions for safe handling : Avoid contact with skin and eyes. Do not breathe vapours.

Hygiene measures : Do not eat, drink or smoke when using this product. Wash hands and other exposed areas with mild soap and water before eating, drinking or smoking and when leaving work.

7.2. Conditions for safe storage, including any incompatibilities

Storage conditions : Keep container tightly closed. Keep container closed when not in use.

7.3. Specific end use(s)

No additional information available

SECTION 8: Exposure controls/personal protection

8.1. Control parameters

No additional information available

ETHYLENE DIAMINE TETRA ACETIC ACID (EDTA) Extra Pure

Safety Data Sheet

8.2. Exposure controls

Hand protection	: Protective gloves
Eye protection	: Chemical goggles or safety glasses
Skin and body protection	: Wear suitable protective clothing
Respiratory protection	: [In case of inadequate ventilation] wear respiratory protection.

SECTION 9: Physical and chemical properties

9.1. Information on basic physical and chemical properties

Physical state	: Solid
Molecular mass	: 292.25 g/mol
Colour	: White crystalline.
Odour	: odourless.
Odour threshold	: No data available
pH	: 2.5 at 10 g/l at 23 °C
Relative evaporation rate (butylacetate=1)	: No data available
Melting point	: 250 °C
Freezing point	: No data available
Boiling point	: No data available
Flash point	: No data available
Auto-ignition temperature	: No data available
Decomposition temperature	: No data available
Flammability (solid, gas)	: No data available
Vapour pressure	: No data available
Relative vapour density at 20 °C	: No data available
Relative density	: No data available
Density	: 0.86 g/cm ³ at 20 °C
Solubility	: Water: Slightly soluble in water
Log Pow	: -3.34
Viscosity, kinematic	: No data available
Viscosity, dynamic	: No data available
Explosive properties	: No data available
Oxidising properties	: No data available
Explosive limits	: No data available

ETHYLENE DIAMINE TETRA ACETIC ACID (EDTA) Extra Pure

Safety Data Sheet

9.2. Other information

No additional information available

SECTION 10: Stability and reactivity

10.1. Reactivity

No additional information available

10.2. Chemical stability

Stable under normal conditions.

10.3. Possibility of hazardous reactions

No additional information available

10.4. Conditions to avoid

Air contact. Direct sunlight. Moisture. Keep away from heat, hot surfaces, sparks, open flames and other ignition sources. No smoking.

10.5. Incompatible materials

No additional information available

10.6. Hazardous decomposition products

No additional information available

SECTION 11: Toxicological information

11.1. Information on toxicological effects

Acute toxicity : Not classified

Skin corrosion/irritation : Not classified

pH: 2.5 at 10 g/l at 23 °C

Serious eye damage/irritation : Causes serious eye irritation.

pH: 2.5 at 10 g/l at 23 °C

Respiratory or skin sensitisation : Not classified

Germ cell mutagenicity : Not classified

Carcinogenicity : Not classified

Reproductive toxicity : Not classified

STOT-single exposure : Not classified

STOT-repeated exposure : Not classified

Aspiration hazard : Not classified

SECTION 12: Ecological information

12.1. Toxicity

Ecology - water : May cause long lasting harmful effects to aquatic life.

ETHYLENE DIAMINE TETRA ACETIC ACID (EDTA) Extra Pure

Safety Data Sheet

12.2. Persistence and degradability

ETHYLENE DIAMINE TETRA ACETIC ACID (EDTA) Extra Pure (60-00-4)

Persistence and degradability	May cause long-term adverse effects in the environment.
-------------------------------	---

12.3. Bioaccumulative potential

ETHYLENE DIAMINE TETRA ACETIC ACID (EDTA) Extra Pure (60-00-4)

Log Pow	-3.34
---------	-------

12.4. Mobility in soil

No additional information available

12.5. Results of PBT and vPvB assessment

No additional information available

12.6. Other adverse effects

No additional information available

SECTION 13: Disposal considerations

13.1. Waste treatment methods

Product/Packaging disposal recommendations : Dispose of contents/container to hazardous or special waste collection point, in accordance with local, regional, national and/or international regulation.

SECTION 14: Transport information

In accordance with ADR / RID / IMDG / IATA / ADN

14.1. UN number

UN-No. (ADR)	: Not applicable
UN-No. (IMDG)	: Not applicable
UN-No. (IATA)	: Not applicable
UN-No. (ADN)	: Not applicable
UN-No. (RID)	: Not applicable

14.2. UN proper shipping name

Proper Shipping Name (ADR)	: Not applicable
Proper Shipping Name (IMDG)	: Not applicable
Proper Shipping Name (IATA)	: Not applicable
Proper Shipping Name (ADN)	: Not applicable
Proper Shipping Name (RID)	: Not applicable

14.3. Transport hazard class(es)

ADR

Transport hazard class(es) (ADR) : Not applicable

IMDG

Transport hazard class(es) (IMDG) : Not applicable

IATA

ETHYLENE DIAMINE TETRA ACETIC ACID (EDTA) Extra Pure

Safety Data Sheet

Transport hazard class(es) (IATA) : Not applicable

ADN

Transport hazard class(es) (ADN) : Not applicable

RID

Transport hazard class(es) (RID) : Not applicable

14.4. Packing group

Packing group (ADR) : Not applicable

Packing group (IMDG) : Not applicable

Packing group (IATA) : Not applicable

Packing group (ADN) : Not applicable

Packing group (RID) : Not applicable

14.5. Environmental hazards

Dangerous for the environment : No

Marine pollutant : No

Other information : No supplementary information available

14.6. Special precautions for user

- Overland transport

No data available

- Transport by sea

No data available

- Air transport

No data available

- Inland waterway transport

No data available

- Rail transport

No data available

14.7. Transport in bulk according to Annex II of MARPOL 73/78 and the IBC Code

Not applicable

SECTION 15: Regulatory information

15.1. Safety, health and environmental regulations/legislation specific for the substance or mixture

15.1.1. EU-Regulations

No REACH Annex XVII restrictions

ETHYLENE DIAMINE TETRA ACETIC ACID (EDTA) Extra Pure is not on the REACH Candidate List

ETHYLENE DIAMINE TETRA ACETIC ACID (EDTA) Extra Pure is not on the REACH Annex XIV List

15.1.2. National regulations

ETHYLENE DIAMINE TETRA ACETIC ACID (EDTA) Extra Pure

Safety Data Sheet

Germany

Reference to AwSV : Water hazard class (WGK) 2, significant hazard to water (Classification according to AwSV; ID No. 104)

12th Ordinance Implementing the Federal Immission Control Act - 12.BImSchV : Is not subject of the 12. BImSchV (Hazardous Incident Ordinance)

Netherlands

SZW-lijst van kankerverwekkende stoffen : The substance is not listed

SZW-lijst van mutagene stoffen : The substance is not listed

NIET-limitatieve lijst van voor de voortplanting giftige stoffen – Borstvoeding : The substance is not listed

NIET-limitatieve lijst van voor de voortplanting giftige stoffen – Vruchtbaarheid : The substance is not listed

NIET-limitatieve lijst van voor de voortplanting giftige stoffen – Ontwikkeling : The substance is not listed

Denmark

Recommendations Danish Regulation : Young people below the age of 18 years are not allowed to use the product

15.2. Chemical safety assessment

No additional information available

SECTION 16: Other information

Full text of R-, H- and EUH-statements:

Eye Irrit. 2	Serious eye damage/eye irritation, Category 2
H319	Causes serious eye irritation.
R36	Irritating to eyes
R52	Harmful to aquatic organisms
R53	May cause long-term adverse effects in the aquatic environment
Xn	Harmful

This information is based on our current knowledge and is intended to describe the product for the purposes of health, safety and environmental requirements only. It should not therefore be construed as guaranteeing any specific property of the product