

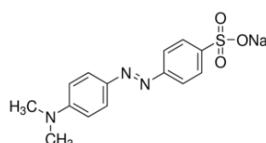
CAS-No.: 547-58-0 MSDS

MATERIAL SAFETY DATA SHEET (MSDS)

SECTION 1: Identification of the substance/mixture and of the company/undertaking

1.1. Product identifier

Product form : Substance
:
CAS-No. : 547-58-0
Product code : 04670
Chemical structure :



1.2. Relevant identified uses of the substance or mixture and uses advised against

1.2.1. Relevant identified uses

Industrial/Professional use spec : Industrial
For professional use only

1.2.2. Uses advised against

No additional information available

1.3. Details of the supplier of the safety data sheet

LOBA CHEMIE PVT.LTD.
107 Wode House Road, Jehangir Villa, Colaba
400005 Mumbai - INDIA
T +91 22 6663 6663 - F +91 22 6663 6699
info@lobachemie.com - www.lobachemie.com

1.4. Emergency telephone number

Emergency number : + 91 22 6663 6663 (9:00am - 6:00 pm)

SECTION 2: Hazards identification

2.1. Classification of the substance or mixture

Classification according to Regulation (EC) No. 1272/2008 [CLP]

Acute toxicity (oral), H301
Category 3

Full text of H statements : see section 16

Classification according to Directive 67/548/EEC [DSD] or 1999/45/EC [DPD]

T; R25

Full text of R-phrases: see section 16

METHYL ORANGE INDICATOR ACS

Safety Data Sheet

Adverse physicochemical, human health and environmental effects

No additional information available

2.2. Label elements

Labelling according to Regulation (EC) No. 1272/2008 [CLP]

Hazard pictograms (CLP) :



GHS06

Signal word (CLP) : Danger

Hazard statements (CLP) : H301 - Toxic if swallowed.

Precautionary statements (CLP) : P301+P310 - IF SWALLOWED: Immediately call a POISON CENTER/doctor

2.3. Other hazards

No additional information available

SECTION 3: Composition/information on ingredients

3.1. Substances

Name : METHYL ORANGE INDICATOR ACS

CAS-No. : 547-58-0

Full text of R- and H-statements: see section 16

3.2. Mixtures

Not applicable

SECTION 4: First aid measures

4.1. Description of first aid measures

First-aid measures after inhalation : Remove person to fresh air and keep comfortable for breathing. Give oxygen or artificial respiration if necessary. If you feel unwell, seek medical advice.

First-aid measures after skin contact : Gently wash with plenty of soap and water. If skin irritation occurs: Get medical advice/attention.

First-aid measures after eye contact : Remove contact lenses, if present and easy to do. Continue rinsing. Rinse cautiously with water for several minutes. If eye irritation persists: Get medical advice/attention.

First-aid measures after ingestion : Rinse mouth out with water. If you feel unwell, seek medical advice.

4.2. Most important symptoms and effects, both acute and delayed

Symptoms/effects after ingestion : Toxic if swallowed.

4.3. Indication of any immediate medical attention and special treatment needed

Treat symptomatically.

METHYL ORANGE INDICATOR ACS

Safety Data Sheet

SECTION 5: Firefighting measures

5.1. Extinguishing media

Suitable extinguishing media : dry chemical powder, alcohol-resistant foam, carbon dioxide (CO₂).
Unsuitable extinguishing media : Do not use a heavy water stream.

5.2. Special hazards arising from the substance or mixture

No additional information available

5.3. Advice for firefighters

Protection during firefighting : Do not attempt to take action without suitable protective equipment.

SECTION 6: Accidental release measures

6.1. Personal precautions, protective equipment and emergency procedures

6.1.1. For non-emergency personnel

Emergency procedures : Evacuate unnecessary personnel.

6.1.2. For emergency responders

Protective equipment : Use personal protective equipment as required.
Emergency procedures : Stop release.

6.2. Environmental precautions

Avoid release to the environment.

6.3. Methods and material for containment and cleaning up

Methods for cleaning up : Clear up rapidly by scoop or vacuum.

6.4. Reference to other sections

No additional information available

SECTION 7: Handling and storage

7.1. Precautions for safe handling

Precautions for safe handling : Do not get in eyes, on skin, or on clothing.
Hygiene measures : Do not eat, drink or smoke when using this product. Wash hands, forearms and face thoroughly after handling.

7.2. Conditions for safe storage, including any incompatibilities

Storage conditions : Store in original container. Keep container tightly closed. Store in a dry place. Protect from moisture.

7.3. Specific end use(s)

No additional information available

SECTION 8: Exposure controls/personal protection

8.1. Control parameters

No additional information available

METHYL ORANGE INDICATOR ACS

Safety Data Sheet

8.2. Exposure controls

| | |
|--------------------------|---|
| Hand protection | : protective gloves |
| Eye protection | : Chemical goggles or safety glasses |
| Skin and body protection | : Wear fire/flammable resistant/retardant clothing. |
| Respiratory protection | : Wear appropriate mask |

SECTION 9: Physical and chemical properties

9.1. Information on basic physical and chemical properties

| | |
|--|-------------------------------------|
| Physical state | : Solid |
| Molecular mass | : 327.33 g/mol |
| Colour | : Yellow to orange. |
| Odour | : odourless. |
| Odour threshold | : No data available |
| pH | : No data available |
| Relative evaporation rate (butylacetate=1) | : No data available |
| Melting point | : No data available |
| Freezing point | : No data available |
| Boiling point | : No data available |
| Flash point | : No data available |
| Auto-ignition temperature | : No data available |
| Decomposition temperature | : No data available |
| Flammability (solid, gas) | : No data available |
| Vapour pressure | : No data available |
| Relative vapour density at 20 °C | : No data available |
| Relative density | : No data available |
| Density | : 1 g/cm ³ |
| Solubility | : Water: Soluble in 500 parts water |
| Log Pow | : No data available |
| Viscosity, kinematic | : No data available |
| Viscosity, dynamic | : No data available |
| Explosive properties | : No data available |
| Oxidising properties | : No data available |
| Explosive limits | : No data available |

9.2. Other information

No additional information available

METHYL ORANGE INDICATOR ACS

Safety Data Sheet

SECTION 10: Stability and reactivity

10.1. Reactivity

No additional information available

10.2. Chemical stability

Stable under normal conditions.

10.3. Possibility of hazardous reactions

No additional information available

10.4. Conditions to avoid

Direct sunlight. Air contact. Moisture.

10.5. Incompatible materials

No additional information available

10.6. Hazardous decomposition products

No additional information available

SECTION 11: Toxicological information

11.1. Information on toxicological effects

Acute toxicity : Toxic if swallowed.

Skin corrosion/irritation : Not classified

Serious eye damage/irritation : Not classified

Respiratory or skin sensitisation : Not classified

Germ cell mutagenicity : Not classified

Carcinogenicity : Not classified

Reproductive toxicity : Not classified

STOT-single exposure : Not classified

STOT-repeated exposure : Not classified

Aspiration hazard : Not classified

Potential adverse human health effects and symptoms : Toxic if swallowed.

SECTION 12: Ecological information

12.1. Toxicity

No additional information available

METHYL ORANGE INDICATOR ACS

Safety Data Sheet

12.2. Persistence and degradability

No additional information available

12.3. Bioaccumulative potential

No additional information available

12.4. Mobility in soil

No additional information available

12.5. Results of PBT and vPvB assessment

No additional information available

12.6. Other adverse effects

No additional information available

SECTION 13: Disposal considerations

13.1. Waste treatment methods

Product/Packaging disposal recommendations : Dispose of contents/container to hazardous or special waste collection point, in accordance with local, regional, national and/or international regulation.
Ecology - waste materials : Hazardous waste due to toxicity.

SECTION 14: Transport information

In accordance with ADR / RID / IMDG / IATA / ADN

14.1. UN number

UN-No. (ADR) : 3143
UN-No. (IMDG) : 3143
UN-No. (IATA) : 3143
UN-No. (ADN) : 3143
UN-No. (RID) : 3143

14.2. UN proper shipping name

Proper Shipping Name (ADR) : DYE, SOLID, TOXIC, N.O.S.
Proper Shipping Name (IMDG) : DYE, SOLID, TOXIC, N.O.S.
Proper Shipping Name (IATA) : Not applicable
Proper Shipping Name (ADN) : DYE, SOLID, TOXIC, N.O.S.
Proper Shipping Name (RID) : DYE, SOLID, TOXIC, N.O.S.
Transport document description (ADR) : UN 3143 DYE, SOLID, TOXIC, N.O.S., 6.1, III, (E)
Transport document description (IMDG) : UN 3143 DYE, SOLID, TOXIC, N.O.S., 6.1, III
Transport document description (IATA) : UN 3143 , 6.1, III
Transport document description (ADN) : UN 3143 DYE, SOLID, TOXIC, N.O.S., 6.1, III
Transport document description (RID) : UN 3143 DYE, SOLID, TOXIC, N.O.S., 6.1, III

14.3. Transport hazard class(es)

ADR

Transport hazard class(es) (ADR) : 6.1
Danger labels (ADR) : 6.1

METHYL ORANGE INDICATOR ACS

Safety Data Sheet



IMDG

Transport hazard class(es) (IMDG) : 6.1

Danger labels (IMDG) : 6.1



IATA

Transport hazard class(es) (IATA) : 6.1

Hazard labels (IATA) : 6.1



ADN

Transport hazard class(es) (ADN) : 6.1

Danger labels (ADN) : 6.1



RID

Transport hazard class(es) (RID) : 6.1

Danger labels (RID) : 6.1



14.4. Packing group

Packing group (ADR) : III

Packing group (IMDG) : III

Packing group (IATA) : III

Packing group (ADN) : III

Packing group (RID) : III

14.5. Environmental hazards

Dangerous for the environment : No

Marine pollutant : No

Other information : No supplementary information available

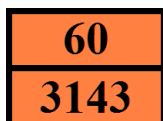
METHYL ORANGE INDICATOR ACS

Safety Data Sheet

14.6. Special precautions for user

- Overland transport

| | |
|---|---------------------------|
| Classification code (ADR) | : T2 |
| Special provisions (ADR) | : 274 |
| Limited quantities (ADR) | : 5kg |
| Excepted quantities (ADR) | : E1 |
| Packing instructions (ADR) | : P002, IBC08, LP02, R001 |
| Special packing provisions (ADR) | : B3 |
| Mixed packing provisions (ADR) | : MP10 |
| Portable tank and bulk container instructions (ADR) | : T1 |
| Portable tank and bulk container special provisions (ADR) | : TP33 |
| Tank code (ADR) | : SGAH, L4BH |
| Tank special provisions (ADR) | : TU15, TE19 |
| Vehicle for tank carriage | : AT |
| Transport category (ADR) | : 2 |
| Special provisions for carriage - Bulk (ADR) | : VC1, VC2, AP7 |
| Special provisions for carriage - Loading, unloading and handling (ADR) | : CV13, CV28 |
| Special provisions for carriage - Operation (ADR) | : S9 |
| Hazard identification number (Kemler No.) | : 60 |
| Orange plates | : |



| | |
|-------------------------------|------|
| Tunnel restriction code (ADR) | : E |
| EAC code | : 2X |

- Transport by sea

| | |
|------------------------------------|---|
| Special provisions (IMDG) | : 223, 274 |
| Packing instructions (IMDG) | : P002, LP02 |
| IBC packing instructions (IMDG) | : IBC08 |
| IBC special provisions (IMDG) | : B3 |
| Tank instructions (IMDG) | : T1 |
| Tank special provisions (IMDG) | : TP33 |
| EmS-No. (Fire) | : F-A |
| EmS-No. (Spillage) | : S-A |
| Stowage category (IMDG) | : A |
| Properties and observations (IMDG) | : A wide range of toxic solids. Toxic if swallowed, by skin contact or by inhalation. |
| MFAG-No | : 151 |

- Air transport

No data available

- Inland waterway transport

| | |
|-----------------------------------|------------|
| Classification code (ADN) | : T2 |
| Special provisions (ADN) | : 274, 802 |
| Limited quantities (ADN) | : 5 kg |
| Excepted quantities (ADN) | : E1 |
| Equipment required (ADN) | : PP, EP |
| Number of blue cones/lights (ADN) | : 0 |

METHYL ORANGE INDICATOR ACS

Safety Data Sheet

- Rail transport

| | |
|---|---------------------------|
| Classification code (RID) | : T2 |
| Special provisions (RID) | : 274 |
| Excepted quantities (RID) | : E1 |
| Packing instructions (RID) | : P002, IBC08, LP02, R001 |
| Special packing provisions (RID) | : B3 |
| Mixed packing provisions (RID) | : MP10 |
| Portable tank and bulk container instructions (RID) | : T1 |
| Portable tank and bulk container special provisions (RID) | : TP33 |
| Tank codes for RID tanks (RID) | : SGAH, L4BH |
| Special provisions for RID tanks (RID) | : TU15 |
| Transport category (RID) | : 2 |
| Special provisions for carriage – Bulk (RID) | : VC1, VC2, AP7 |
| Special provisions for carriage - Loading, unloading and handling (RID) | : CW13, CW28, CW31 |
| Colis express (express parcels) (RID) | : CE11 |
| Hazard identification number (RID) | : 60 |

14.7. Transport in bulk according to Annex II of MARPOL 73/78 and the IBC Code

Not applicable

SECTION 15: Regulatory information

15.1. Safety, health and environmental regulations/legislation specific for the substance or mixture

15.1.1. EU-Regulations

No REACH Annex XVII restrictions

METHYL ORANGE INDICATOR ACS is not on the REACH Candidate List

METHYL ORANGE INDICATOR ACS is not on the REACH Annex XIV List

15.1.2. National regulations

Germany

12th Ordinance Implementing the Federal Immission Control Act - 12.BImSchV : Is not subject of the 12. BImSchV (Hazardous Incident Ordinance)

Netherlands

SZW-lijst van kankerverwekkende stoffen : The substance is not listed

SZW-lijst van mutagene stoffen : The substance is not listed

NIET-limitatieve lijst van voor de voortplanting giftige stoffen – Borstvoeding : The substance is not listed

NIET-limitatieve lijst van voor de voortplanting giftige stoffen – Vruchtbaarheid : The substance is not listed

NIET-limitatieve lijst van voor de voortplanting giftige stoffen – Ontwikkeling : The substance is not listed

METHYL ORANGE INDICATOR ACS

Safety Data Sheet

Denmark

Recommendations Danish Regulation : Young people below the age of 18 years are not allowed to use the product

15.2. Chemical safety assessment

No additional information available

SECTION 16: Other information

Full text of R-, H- and EUH-statements:

| | |
|---------------------|-----------------------------------|
| Acute Tox. 3 (Oral) | Acute toxicity (oral), Category 3 |
| H301 | Toxic if swallowed. |
| R25 | Toxic if swallowed |
| T | Toxic |

This information is based on our current knowledge and is intended to describe the product for the purposes of health, safety and environmental requirements only. It should not therefore be construed as guaranteeing any specific property of the product.