

Safety Data Sheet

according to the REACH Regulation (EC) 1907/2006 amended by Regulation (EU) 2020/878

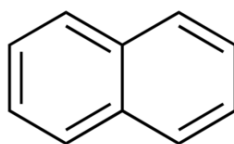
Reference number: 04740

Issue date: 1/15/2024 Revision date: 1/15/2024 Supersedes version of: 4/9/2015 Version: 1.0

SECTION 1: Identification of the substance/mixture and of the company/undertaking

1.1. Product identifier

| | |
|--------------------|-----------------------------------|
| Product form | : Substance |
| Trade name | : NAPHTHALENE SCINTILLATION GRADE |
| EC Index-No. | : 601-052-00-2 |
| EC-No. | : 202-049-5 |
| CAS-No. | : 91-20-3 |
| Product code | : 04740 |
| Type of product | : Hydrocarbons, aromatic |
| Formula | : C ₁₀ H ₈ |
| Chemical structure | : |



| | |
|----------|--|
| Synonyms | : White tar, Camphor tar, Tar camphor, antimitte, Albocarbon, Hexalene, Mothballs, Moth flakes |
|----------|--|

1.2. Relevant identified uses of the substance or mixture and uses advised against

1.2.1. Relevant identified uses

| | |
|------------------------------|---|
| Use of the substance/mixture | : Laboratory chemicals, Manufacture of substances |
|------------------------------|---|

1.2.2. Uses advised against

No additional information available

1.3. Details of the supplier of the safety data sheet

LOBA CHEMIE PVT.LTD.
107 Wode House Road, Jehangir Villa, Colaba
400005 Mumbai
INDIA
T +91 22 6663 6663, F +91 22 6663 6699
info@lobachemie.com, www.lobachemie.com

1.4. Emergency telephone number

| | |
|------------------|--|
| Emergency number | : + 91 22 6663 6663 (9:00am - 6:00 pm) |
|------------------|--|

SECTION 2: Hazards identification

2.1. Classification of the substance or mixture

Classification according to Regulation (EC) No. 1272/2008 [CLP]

| | |
|---|------|
| Flammable solids, Category 1 | H228 |
| Acute toxicity (oral), Category 4 | H302 |
| Carcinogenicity, Category 2 | H351 |
| Hazardous to the aquatic environment – Acute Hazard, Category 1 | H400 |
| Hazardous to the aquatic environment – Chronic Hazard, Category 1 | H410 |

Full text of H- and EUH-statements: see section 16

Adverse physicochemical, human health and environmental effects

Flammable solid. Suspected of causing cancer. Harmful if swallowed. Very toxic to aquatic life with long lasting effects.

NAPHTHALENE SCINTILLATION GRADE

Safety Data Sheet

according to the REACH Regulation (EC) 1907/2006 amended by Regulation (EU) 2020/878

2.2. Label elements

Labelling according to Regulation (EC) No. 1272/2008 [CLP]

Hazard pictograms (CLP) :



GHS02

GHS07

GHS08

GHS09

Signal word (CLP) :

Danger

Hazard statements (CLP) :

H228 - Flammable solid.

H302 - Harmful if swallowed.

H351 - Suspected of causing cancer.

H410 - Very toxic to aquatic life with long lasting effects.

Precautionary statements (CLP) :

P202 - Do not handle until all safety precautions have been read and understood.

P210 - Keep away from heat, hot surfaces, sparks, open flames and other ignition sources.

No smoking.

P240 - Ground and bond container and receiving equipment.

P273 - Avoid release to the environment.

P301+P312 - IF SWALLOWED: Call a POISON CENTRE or doctor if you feel unwell.

P308+P313 - IF exposed or concerned: Get medical advice/attention.

2.3. Other hazards

Contains no PBT and/or vPvB substances $\geq 0.1\%$ assessed in accordance with REACH Annex XIII

SECTION 3: Composition/information on ingredients

3.1. Substances

Substance type : Mono-constituent

| Name | Product identifier | % |
|-------------|---|-----|
| NAPHTHALENE | CAS-No.: 91-20-3 EC-No.: 202-049-5 EC Index-No.: 601-052-00-2 | 100 |

3.2. Mixtures

Not applicable

SECTION 4: First aid measures

4.1. Description of first aid measures

| | |
|---------------------------------------|--|
| First-aid measures general | : Suspected of causing cancer. IF exposed or concerned: Get medical advice/attention. Call a poison center or a doctor if you feel unwell. |
| First-aid measures after inhalation | : Remove person to fresh air and keep comfortable for breathing. Give oxygen or artificial respiration if necessary. If you feel unwell, seek medical advice. |
| First-aid measures after skin contact | : If skin irritation occurs: Get medical advice/attention. Wash skin with plenty of water. |
| First-aid measures after eye contact | : Remove contact lenses, if present and easy to do. Continue rinsing. Rinse cautiously with water for several minutes. If eye irritation persists: Get medical advice/attention. |
| First-aid measures after ingestion | : Call a POISON CENTER/doctor if you feel unwell. Rinse mouth. Call a poison center or a doctor if you feel unwell. |

4.2. Most important symptoms and effects, both acute and delayed

| | |
|-------------------------------------|---|
| Symptoms/effects after inhalation | : Dust of the product, if present, may cause respiratory irritation after an excessive inhalation exposure. Although no appropriate human or animal health effects data are known to exist, this material is expected to be an inhalation hazard. |
| Symptoms/effects after skin contact | : None under normal conditions. Dust may cause irritation in skin folds or by contact in combination with tight clothing. |

NAPHTHALENE SCINTILLATION GRADE

Safety Data Sheet

according to the REACH Regulation (EC) 1907/2006 amended by Regulation (EU) 2020/878

| | |
|------------------------------------|--|
| Symptoms/effects after eye contact | : None under normal conditions. Dust from this product may cause eye irritation. |
| Symptoms/effects after ingestion | : Harmful if swallowed. |
| Chronic symptoms | : Suspected carcinogen. |

4.3. Indication of any immediate medical attention and special treatment needed

Treat symptomatically.

SECTION 5: Firefighting measures

5.1. Extinguishing media

| | |
|--------------------------------|--|
| Suitable extinguishing media | : dry chemical powder, alcohol-resistant foam, carbon dioxide (CO ₂). Water spray. Dry powder. Foam. |
| Unsuitable extinguishing media | : Do not use a heavy water stream. |

5.2. Special hazards arising from the substance or mixture

| | |
|--|--------------------------------|
| Fire hazard | : Flammable solid. |
| Explosion hazard | : No direct explosion hazard. |
| Hazardous decomposition products in case of fire | : Toxic fumes may be released. |

5.3. Advice for firefighters

| | |
|--------------------------------|---|
| Firefighting instructions | : Fight fire from safe distance and protected location. Do not enter fire area without proper protective equipment, including respiratory protection. |
| Protection during firefighting | : Do not attempt to take action without suitable protective equipment. Self-contained breathing apparatus. Complete protective clothing. |

SECTION 6: Accidental release measures

6.1. Personal precautions, protective equipment and emergency procedures

| | |
|------------------|---|
| General measures | : Notify authorities if product enters sewers or public waters. Absorb spillage to prevent material damage. |
|------------------|---|

6.1.1. For non-emergency personnel

| | |
|----------------------|---|
| Protective equipment | : Wear recommended personal protective equipment. |
| Emergency procedures | : Ventilate spillage area. Evacuate unnecessary personnel. No open flames, no sparks, and no smoking. |

6.1.2. For emergency responders

| | |
|----------------------|--|
| Protective equipment | : Do not attempt to take action without suitable protective equipment. Use personal protective equipment as required. For further information refer to section 8: "Exposure controls/personal protection". |
| Emergency procedures | : Stop release. Evacuate unnecessary personnel. |

6.2. Environmental precautions

Avoid release to the environment.

6.3. Methods and material for containment and cleaning up

| | |
|-------------------------|--|
| For containment | : Collect spillage. |
| Methods for cleaning up | : Mechanically recover the product. Clear up rapidly by scoop or vacuum. Notify authorities if product enters sewers or public waters. |
| Other information | : Dispose of materials or solid residues at an authorized site. |

6.4. Reference to other sections

For further information refer to section 13.

NAPHTHALENE SCINTILLATION GRADE

Safety Data Sheet

according to the REACH Regulation (EC) 1907/2006 amended by Regulation (EU) 2020/878

SECTION 7: Handling and storage

7.1. Precautions for safe handling

| | |
|-----------------------------------|--|
| Additional hazards when processed | : Not expected to present a significant hazard under anticipated conditions of normal use. |
| Precautions for safe handling | : Ensure good ventilation of the work station. Obtain special instructions before use. Do not handle until all safety precautions have been read and understood. Keep away from heat, hot surfaces, sparks, open flames and other ignition sources. No smoking. Ground/bond container and receiving equipment. Wear personal protective equipment. |
| Hygiene measures | : Wash hands, forearms and face thoroughly after handling. Do not eat, drink or smoke when using this product. Always wash hands after handling the product. |

7.2. Conditions for safe storage, including any incompatibilities

| | |
|---------------------|---|
| Technical measures | : Ground/bond container and receiving equipment. |
| Storage conditions | : Keep container closed when not in use. Store in original container. Store in a dry place. Keep cool. Protect from sunlight. Keep away from ignition sources. Store locked up. |
| Packaging materials | : Store always product in container of same material as original container. |

7.3. Specific end use(s)

No additional information available

SECTION 8: Exposure controls/personal protection

8.1. Control parameters

8.1.1 National occupational exposure and biological limit values

No additional information available

8.1.2. Recommended monitoring procedures

No additional information available

8.1.3. Air contaminants formed

No additional information available

8.1.4. DNEL and PNEC

No additional information available

8.1.5. Control banding

No additional information available

8.2. Exposure controls

8.2.1. Appropriate engineering controls

Appropriate engineering controls:

Ensure good ventilation of the work station.

8.2.2. Personal protection equipment

Personal protective equipment:

Wear recommended personal protective equipment.

Personal protective equipment symbol(s):



8.2.2.1. Eye and face protection

Eye protection:

Chemical goggles or safety glasses

NAPHTHALENE SCINTILLATION GRADE

Safety Data Sheet

according to the REACH Regulation (EC) 1907/2006 amended by Regulation (EU) 2020/878

8.2.2.2. Skin protection

Skin and body protection:

Wear a mask

Hand protection:

Protective gloves

8.2.2.3. Respiratory protection

Respiratory protection:

Wear appropriate mask

8.2.2.4. Thermal hazards

No additional information available

8.2.3. Environmental exposure controls

Environmental exposure controls:

Avoid release to the environment.

SECTION 9: Physical and chemical properties

9.1. Information on basic physical and chemical properties

| | |
|---|---|
| Physical state | : Solid |
| Colour | : White. |
| Appearance | : Scales. |
| Molecular mass | : 128.17 g/mol |
| Odour | : strong coal-tar odour. |
| Odour threshold | : Not available |
| Melting point | : 79.5 – 81 °C |
| Freezing point | : Not applicable |
| Boiling point | : 218 °C |
| Flammability | : Flammable solid. |
| Lower explosion limit | : 0.9 vol % |
| Upper explosion limit | : 5.9 vol % |
| Flash point | : 80 °C |
| Auto-ignition temperature | : 525 |
| Decomposition temperature | : 540 °C |
| pH | : Not available |
| pH solution | : Not available |
| Viscosity, kinematic | : Not applicable |
| Solubility | : Water: Insoluble in water Ethanol: Soluble |
| Partition coefficient n-octanol/water (Log Kow) | : Not available |
| Partition coefficient n-octanol/water (Log Pow) | : 3.3 |
| Vapour pressure | : 0.05 mm Hg at 20°C |
| Vapour pressure at 50°C | : Not available |
| Density | : 1.16 g/cm ³ at 20 °C |
| Relative density | : 1.162 at 20 °C/4 °C |
| Relative vapour density at 20°C | : 4.4 (Air = 1) |
| Particle size | : Not available |

9.2. Other information

9.2.1. Information with regard to physical hazard classes

No additional information available

9.2.2. Other safety characteristics

No additional information available

NAPHTHALENE SCINTILLATION GRADE

Safety Data Sheet

according to the REACH Regulation (EC) 1907/2006 amended by Regulation (EU) 2020/878

SECTION 10: Stability and reactivity

10.1. Reactivity

Flammable solid.

10.2. Chemical stability

Stable under normal conditions.

10.3. Possibility of hazardous reactions

No dangerous reactions known under normal conditions of use.

10.4. Conditions to avoid

Direct sunlight. Air contact. Moisture. Open flame. Avoid contact with hot surfaces. Heat. No flames, no sparks. Eliminate all sources of ignition.

10.5. Incompatible materials

No additional information available

10.6. Hazardous decomposition products

Under normal conditions of storage and use, hazardous decomposition products should not be produced.

SECTION 11: Toxicological information

11.1. Information on hazard classes as defined in Regulation (EC) No 1272/2008

| | |
|-----------------------------------|--------------------------------|
| Acute toxicity (oral) | : Harmful if swallowed. |
| Acute toxicity (dermal) | : Not classified |
| Acute toxicity (inhalation) | : Not classified |
| Skin corrosion/irritation | : Not classified |
| Serious eye damage/irritation | : Not classified |
| Respiratory or skin sensitisation | : Not classified |
| Germ cell mutagenicity | : Not classified |
| Carcinogenicity | : Suspected of causing cancer. |
| Reproductive toxicity | : Not classified |
| STOT-single exposure | : Not classified |
| STOT-repeated exposure | : Not classified |
| Aspiration hazard | : Not classified |

NAPHTHALENE SCINTILLATION GRADE (91-20-3)

| | |
|----------------------|----------------|
| Viscosity, kinematic | Not applicable |
|----------------------|----------------|

11.2. Information on other hazards

11.2.1. Endocrine disrupting properties

No additional information available

11.2.2. Other information

Potential adverse human health effects and symptoms : Harmful if swallowed.

SECTION 12: Ecological information

12.1. Toxicity

| | |
|--|---|
| Ecology - general | : Very toxic to aquatic life with long lasting effects. |
| Ecology - water | : Very toxic to aquatic life with long lasting effects. |
| Hazardous to the aquatic environment, short-term (acute) | : Very toxic to aquatic life. |

NAPHTHALENE SCINTILLATION GRADE

Safety Data Sheet

according to the REACH Regulation (EC) 1907/2006 amended by Regulation (EU) 2020/878

Hazardous to the aquatic environment, long-term (chronic) : Very toxic to aquatic life with long lasting effects.

12.2. Persistence and degradability

NAPHTHALENE SCINTILLATION GRADE (91-20-3)

| | |
|-------------------------------|--------------------|
| Persistence and degradability | Rapidly degradable |
|-------------------------------|--------------------|

12.3. Bioaccumulative potential

No additional information available

12.4. Mobility in soil

No additional information available

12.5. Results of PBT and vPvB assessment

No additional information available

12.6. Endocrine disrupting properties

No additional information available

12.7. Other adverse effects

No additional information available

SECTION 13: Disposal considerations

13.1. Waste treatment methods

| | |
|--|--|
| Regional waste regulation | : Disposal must be done according to official regulations. |
| Waste treatment methods | : Dispose of contents/container in accordance with licensed collector's sorting instructions. |
| Sewage disposal recommendations | : Disposal must be done according to official regulations. |
| Product/Packaging disposal recommendations | : Dispose of contents/container to hazardous or special waste collection point, in accordance with local, regional, national and/or international regulation. Disposal must be done according to official regulations. |
| Additional information | : Do not re-use empty containers. |

SECTION 14: Transport information

In accordance with ADR / IMDG / IATA / ADN / RID

14.1. UN number or ID number

| | |
|---------------|-----------|
| UN-No. (ADR) | : UN 1334 |
| UN-No. (IMDG) | : UN 1334 |
| UN-No. (IATA) | : UN 1334 |
| UN-No. (ADN) | : UN 1334 |
| UN-No. (RID) | : UN 1334 |

14.2. UN proper shipping name

| | |
|---------------------------------------|--|
| Proper Shipping Name (ADR) | : NAPHTHALENE, REFINED |
| Proper Shipping Name (IMDG) | : NAPHTHALENE, REFINED |
| Proper Shipping Name (IATA) | : Naphthalene, refined |
| Proper Shipping Name (ADN) | : NAPHTHALENE, REFINED |
| Proper Shipping Name (RID) | : NAPHTHALENE, REFINED |
| Transport document description (ADR) | : UN 1334 NAPHTHALENE, REFINED, 4.1, III, (E) |
| Transport document description (IMDG) | : UN 1334 NAPHTHALENE, REFINED, 4.1, III, MARINE POLLUTANT/ENVIRONMENTALLY HAZARDOUS |
| Transport document description (IATA) | : UN 1334 Naphthalene, refined, 4.1, III, ENVIRONMENTALLY HAZARDOUS |
| Transport document description (ADN) | : UN 1334 NAPHTHALENE, REFINED, 4.1, III, ENVIRONMENTALLY HAZARDOUS |

NAPHTHALENE SCINTILLATION GRADE

Safety Data Sheet

according to the REACH Regulation (EC) 1907/2006 amended by Regulation (EU) 2020/878

Transport document description (RID) : UN 1334 NAPHTHALENE, REFINED, 4.1, III, ENVIRONMENTALLY HAZARDOUS

14.3. Transport hazard class(es)

ADR

Transport hazard class(es) (ADR) : 4.1

Danger labels (ADR) : 4.1



IMDG

Transport hazard class(es) (IMDG) : 4.1

Danger labels (IMDG) : 4.1



IATA

Transport hazard class(es) (IATA) : 4.1

Danger labels (IATA) : 4.1



ADN

Transport hazard class(es) (ADN) : 4.1

Danger labels (ADN) : 4.1



RID

Transport hazard class(es) (RID) : 4.1

Danger labels (RID) : 4.1



14.4. Packing group

Packing group (ADR) : III

Packing group (IMDG) : III

Packing group (IATA) : III

Packing group (ADN) : III

Packing group (RID) : III

14.5. Environmental hazards

Dangerous for the environment : Yes

Marine pollutant : Yes

Other information : No supplementary information available


NAPHTHALENE SCINTILLATION GRADE

Safety Data Sheet

according to the REACH Regulation (EC) 1907/2006 amended by Regulation (EU) 2020/878

14.6. Special precautions for user

Overland transport

| | |
|---|---|
| Classification code (ADR) | : F1 |
| Special provisions (ADR) | : 501 |
| Limited quantities (ADR) | : 5kg |
| Excepted quantities (ADR) | : E1 |
| Packing instructions (ADR) | : P002, IBC08, LP02, R001 |
| Special packing provisions (ADR) | : B3 |
| Mixed packing provisions (ADR) | : MP10 |
| Portable tank and bulk container instructions (ADR) | : T1, BK1, BK2, BK3 |
| Portable tank and bulk container special provisions (ADR) | : TP33 |
| Tank code (ADR) | : SGAV |
| Vehicle for tank carriage | : AT |
| Transport category (ADR) | : 3 |
| Special provisions for carriage - Bulk (ADR) | : VC1, VC2, AP1 |
| Hazard identification number (Kemler No.) | : 40 |
| Orange plates | :  |
| Tunnel restriction code (ADR) | : E |
| EAC code | : 1Z |

Transport by sea

| | |
|------------------------------------|--|
| Special provisions (IMDG) | : 948, 967 |
| Limited quantities (IMDG) | : 5 kg |
| Excepted quantities (IMDG) | : E1 |
| Packing instructions (IMDG) | : P002, LP02 |
| IBC packing instructions (IMDG) | : IBC08 |
| IBC special provisions (IMDG) | : B3 |
| Tank instructions (IMDG) | : T1, BK2, BK3 |
| Tank special provisions (IMDG) | : TP33 |
| EmS-No. (Fire) | : F-A |
| EmS-No. (Spillage) | : S-G |
| Stowage category (IMDG) | : A |
| Stowage and handling (IMDG) | : SW23 |
| Properties and observations (IMDG) | : Crystalline flakes or powder with a persistent odour. Evolves flammable vapours at, or below, its melting point. |
| MFAG-No | : 133 |

Air transport

| | |
|--|---------|
| PCA Excepted quantities (IATA) | : E1 |
| PCA Limited quantities (IATA) | : Y443 |
| PCA limited quantity max net quantity (IATA) | : 10kg |
| PCA packing instructions (IATA) | : 446 |
| PCA max net quantity (IATA) | : 25kg |
| CAO packing instructions (IATA) | : 449 |
| CAO max net quantity (IATA) | : 100kg |
| Special provisions (IATA) | : A803 |
| ERG code (IATA) | : 3L |

Inland waterway transport

| | |
|---------------------------------------|--------|
| Classification code (ADN) | : F1 |
| Special provisions (ADN) | : 501 |
| Limited quantities (ADN) | : 5 kg |
| Excepted quantities (ADN) | : E1 |
| Carriage permitted (ADN) | : B |
| Equipment required (ADN) | : PP |
| Provisions for carriage in bulk (ADN) | : CO01 |
| Number of blue cones/lights (ADN) | : 0 |

NAPHTHALENE SCINTILLATION GRADE

Safety Data Sheet

according to the REACH Regulation (EC) 1907/2006 amended by Regulation (EU) 2020/878

Rail transport

| | |
|---|---------------------------|
| Classification code (RID) | : F1 |
| Special provisions (RID) | : 501 |
| Limited quantities (RID) | : 5kg |
| Excepted quantities (RID) | : E1 |
| Packing instructions (RID) | : P002, IBC08, LP02, R001 |
| Special packing provisions (RID) | : B3 |
| Mixed packing provisions (RID) | : MP10 |
| Portable tank and bulk container instructions (RID) | : T1, BK1, BK2, BK3 |
| Portable tank and bulk container special provisions (RID) | : TP33 |
| Tank codes for RID tanks (RID) | : SGAV |
| Transport category (RID) | : 3 |
| Special provisions for carriage – Packages (RID) | : W1 |
| Special provisions for carriage – Bulk (RID) | : VC1, VC2, AP1 |
| Colis express (express parcels) (RID) | : CE11 |
| Hazard identification number (RID) | : 40 |

14.7. Maritime transport in bulk according to IMO instruments

Not applicable

SECTION 15: Regulatory information

15.1. Safety, health and environmental regulations/legislation specific for the substance or mixture

15.1.1. EU-Regulations

REACH Annex XVII (Restriction List)

| EU restriction list (REACH Annex XVII) | |
|--|---------------------------------|
| Reference code | Applicable on |
| 40. | NAPHTHALENE SCINTILLATION GRADE |

REACH Annex XIV (Authorisation List)

Not listed on REACH Annex XIV (Authorisation List)

REACH Candidate List (SVHC)

Not listed on the REACH Candidate List

PIC Regulation (Prior Informed Consent)

Not listed on the PIC list (Regulation EU 649/2012)

POP Regulation (Persistent Organic Pollutants)

Not listed on the POP list (Regulation EU 2019/1021)

Ozone Regulation (1005/2009)

Not listed on the Ozone Depletion list (Regulation EU 1005/2009)

Dual-Use Regulation (428/2009)

Contains no substance subject to the COUNCIL REGULATION (EC) No 428/2009 of 5 May 2009 setting up a Community regime for the control of exports, transfer, brokering and transit of dual-use items.

Explosives Precursors Regulation (2019/1148)

Contains no substance(s) listed on the Explosives Precursors list (Regulation EU 2019/1148 on the marketing and use of explosives precursors)

Drug Precursors Regulation (273/2004)

Contains no substance(s) listed on the Drug Precursors list (Regulation EC 273/2004 on the manufacture and the placing on market of certain substances used in the illicit manufacture of narcotic drugs and psychotropic substances)

15.1.2. National regulations

Germany

Water hazard class (WGK) : WGK 3, Highly hazardous to water (Classification according to AwSV; ID No. 269).

NAPHTHALENE SCINTILLATION GRADE

Safety Data Sheet

according to the REACH Regulation (EC) 1907/2006 amended by Regulation (EU) 2020/878

Hazardous Incident Ordinance (12. BImSchV) : Is not subject of the Hazardous Incident Ordinance (12. BImSchV)

Netherlands

SZW-lijst van kankerverwekkende stoffen : The substance is not listed
SZW-lijst van mutagene stoffen : The substance is not listed
SZW-lijst van reprotoxische stoffen – Borstvoeding : The substance is not listed
SZW-lijst van reprotoxische stoffen – Vruchtbaarheid : The substance is not listed
SZW-lijst van reprotoxische stoffen – Ontwikkeling : The substance is not listed

Denmark

Class for fire hazard : Class III-1
Store unit : 50 liter
Classification remarks : Flammable according to the Danish Ministry of Justice; Emergency management guidelines for the storage of flammable liquids must be followed
Danish National Regulations : Young people below the age of 18 years are not allowed to use the product
Pregnant/breastfeeding women working with the product must not be in direct contact with the product

15.2. Chemical safety assessment

No chemical safety assessment has been carried out

SECTION 16: Other information

Abbreviations and acronyms:

| | |
|--------|---|
| ADN | European Agreement concerning the International Carriage of Dangerous Goods by Inland Waterways |
| ADR | European Agreement concerning the International Carriage of Dangerous Goods by Road |
| ATE | Acute Toxicity Estimate |
| BCF | Bioconcentration factor |
| BLV | Biological limit value |
| BOD | Biochemical oxygen demand (BOD) |
| COD | Chemical oxygen demand (COD) |
| DMEL | Derived Minimal Effect level |
| DNEL | Derived-No Effect Level |
| EC-No. | European Community number |
| EC50 | Median effective concentration |
| EN | European Standard |
| IARC | International Agency for Research on Cancer |
| IATA | International Air Transport Association |
| IMDG | International Maritime Dangerous Goods |
| LC50 | Median lethal concentration |
| LD50 | Median lethal dose |
| LOAEL | Lowest Observed Adverse Effect Level |
| NOAEC | No-Observed Adverse Effect Concentration |
| NOAEL | No-Observed Adverse Effect Level |
| NOEC | No-Observed Effect Concentration |
| OECD | Organisation for Economic Co-operation and Development |
| OEL | Occupational Exposure Limit |

NAPHTHALENE SCINTILLATION GRADE

Safety Data Sheet

according to the REACH Regulation (EC) 1907/2006 amended by Regulation (EU) 2020/878

| Abbreviations and acronyms: | |
|-----------------------------|--|
| PBT | Persistent Bioaccumulative Toxic |
| PNEC | Predicted No-Effect Concentration |
| RID | Regulations concerning the International Carriage of Dangerous Goods by Rail |
| SDS | Safety Data Sheet |
| STP | Sewage treatment plant |
| ThOD | Theoretical oxygen demand (ThOD) |
| TLM | Median Tolerance Limit |
| VOC | Volatile Organic Compounds |
| CAS-No. | Chemical Abstract Service number |
| N.O.S. | Not Otherwise Specified |
| vPvB | Very Persistent and Very Bioaccumulative |
| ED | Endocrine disrupting properties |

| Full text of H- and EUH-statements: | |
|-------------------------------------|---|
| Acute Tox. 4 (Oral) | Acute toxicity (oral), Category 4 |
| Aquatic Acute 1 | Hazardous to the aquatic environment – Acute Hazard, Category 1 |
| Aquatic Chronic 1 | Hazardous to the aquatic environment – Chronic Hazard, Category 1 |
| Carc. 2 | Carcinogenicity, Category 2 |
| Flam. Sol. 1 | Flammable solids, Category 1 |
| H228 | Flammable solid. |
| H302 | Harmful if swallowed. |
| H351 | Suspected of causing cancer. |
| H400 | Very toxic to aquatic life. |
| H410 | Very toxic to aquatic life with long lasting effects. |

Safety Data Sheet (SDS), EU

This information is based on our current knowledge and is intended to describe the product for the purposes of health, safety and environmental requirements only. It should not therefore be construed as guaranteeing any specific property of the product.