

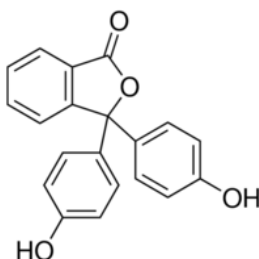
CAS No: 77-09-8 MSDS

MATERIAL SAFETY DATA SHEET (MSDS)

SECTION 1: Identification of the substance/mixture and of the company/undertaking

1.1. Product identifier

Product form : Substance
 :
 EC index no : 604-076-00-1
 EC no : 201-004-7
 CAS No : 77-09-8
 Product code : 05172
 Chemical structure :



1.2. Relevant identified uses of the substance or mixture and uses advised against

1.2.1. Relevant identified uses

Use of the substance/mixture : Laboratory chemicals, Manufacture of substances

1.2.2. Uses advised against

No additional information available

1.3. Details of the supplier of the safety data sheet

LOBA CHEMIE PVT.LTD.
 107 Wode House Road, Jehangir Villa, Colaba
 400005 Mumbai - INDIA
 T +91 22 6663 6663 - F +91 22 6663 6699
info@lobachemie.com - www.lobachemie.com

1.4. Emergency telephone number

Emergency number : + 91 22 6663 6663 (9:00am - 6:00 pm)

SECTION 2: Hazards identification

2.1. Classification of the substance or mixture

Classification according to Regulation (EC) No. 1272/2008 [CLP]

Germ cell mutagenicity, H341
 Category 2
 Carcinogenicity, Category H350
 1A
 Reproductive toxicity, H361
 Category 2

Full text of classification categories and H statements : see section 16

PHENOLPHTHALEIN INDICATOR

Safety Data Sheet

Classification according to Directive 67/548/EEC or 1999/45/EC

Carc.Cat.1; R45

Muta.Cat.3; R68

Repr.Cat.3; R62

Full text of R-phrases: see section 16

Adverse physicochemical, human health and environmental effects

No additional information available

2.2. Label elements

Labelling according to Regulation (EC) No. 1272/2008 [CLP]

Hazard pictograms (CLP) :



GHS08

Signal word (CLP) :

Danger

Hazard statements (CLP) :

H341 - Suspected of causing genetic defects

H350 - May cause cancer

H361 - Suspected of damaging fertility or the unborn child

Precautionary statements (CLP) :

P201 - Obtain special instructions before use

P280 - Wear protective gloves/protective clothing/eye protection/face protection

P308+P313 - IF exposed or concerned: Get medical advice/attention

2.3. Other hazards

This substance/mixture does not meet the PBT criteria of REACH regulation, annex XIII

This substance/mixture does not meet the vPvB criteria of REACH regulation, annex XIII

SECTION 3: Composition/information on ingredients

3.1. Substance

Name : PHENOLPHTHALEIN INDICATOR

CAS No : 77-09-8

EC no : 201-004-7

EC index no : 604-076-00-1

Full text of R- and H-phrases: see section 16

3.2. Mixture

Not applicable

PHENOLPHTHALEIN INDICATOR

Safety Data Sheet

SECTION 4: First aid measures

4.1. Description of first aid measures

- First-aid measures after inhalation : Remove victim to fresh air and keep at rest in a position comfortable for breathing.
- First-aid measures after skin contact : Gently wash with plenty of soap and water.
- First-aid measures after eye contact : Remove contact lenses, if present and easy to do. Continue rinsing. Rinse cautiously with water for several minutes.
- First-aid measures after ingestion : Rinse mouth out with water. If you feel unwell, seek medical advice.

4.2. Most important symptoms and effects, both acute and delayed

- Symptoms/injuries : Suspected of causing genetic defects.
- Chronic symptoms : Suspected of damaging the unborn child. May cause cancer.

4.3. Indication of any immediate medical attention and special treatment needed

Treat symptomatically.

SECTION 5: Firefighting measures

5.1. Extinguishing media

- Suitable extinguishing media : dry chemical powder, alcohol-resistant foam, carbon dioxide (CO₂).
- Unsuitable extinguishing media : Do not use a heavy water stream.

5.2. Special hazards arising from the substance or mixture

No additional information available

5.3. Advice for firefighters

- Protection during firefighting : Do not attempt to take action without suitable protective equipment.

SECTION 6: Accidental release measures

6.1. Personal precautions, protective equipment and emergency procedures

6.1.1. For non-emergency personnel

- Emergency procedures : Evacuate unnecessary personnel.

6.1.2. For emergency responders

- Protective equipment : Avoid breathing dust/fume/gas/mist/vapours/spray.
- Emergency procedures : Stop release.

6.2. Environmental precautions

Avoid release to the environment.

6.3. Methods and material for containment and cleaning up

- Methods for cleaning up : Clean up immediately by sweeping or vacuum.

6.4. Reference to other sections

No additional information available

SECTION 7: Handling and storage

7.1. Precautions for safe handling

- Precautions for safe handling : Do not get in eyes, on skin, or on clothing.
- Hygiene measures : Wash hands and other exposed areas with mild soap and water before eating, drinking or smoking and when leaving work.

7.2. Conditions for safe storage, including any incompatibilities

- Storage conditions : Store in original container. Keep container tightly closed. Store in a dry place. Protect from moisture.

7.3. Specific end use(s)

No additional information available

PHENOLPHTHALEIN INDICATOR

Safety Data Sheet

SECTION 8: Exposure controls/personal protection

8.1. Control parameters

No additional information available

8.2. Exposure controls

Personal protective equipment	: Wash ... thoroughly after handling.
Hand protection	: protective gloves
Eye protection	: Chemical goggles or safety glasses
Skin and body protection	: Wear suitable protective clothing
Respiratory protection	: Wear respiratory protection
Other information	: Do not breathe dust/fume/gas/mist/vapours/spray. Do not eat, drink or smoke when using this product.

SECTION 9: Physical and chemical properties

9.1. Information on basic physical and chemical properties

Physical state	: Solid
Molecular mass	: 318.33 g/mol
Colour	: White powder.
Odour	: odourless.
Odour threshold	: No data available
pH	: No data available
Relative evaporation rate (butylacetate=1)	: No data available
Melting point	: 261 - 263
Freezing point	: No data available
Boiling point	: No data available
Flash point	: No data available
Auto-ignition temperature	: No data available
Decomposition temperature	: No data available
Flammability (solid, gas)	: No data available
Vapour pressure	: No data available
Relative vapour density at 20 °C	: No data available
Relative density	: No data available
Density	: 1.299 g/cm ³
Solubility	: Water: Slightly soluble in water
Log Pow	: No data available

PHENOLPHTHALEIN INDICATOR

Safety Data Sheet

Viscosity, kinematic	: No data available
Viscosity, dynamic	: No data available
Explosive properties	: No data available
Oxidising properties	: No data available
Explosive limits	: No data available

9.2. Other information

No additional information available

SECTION 10: Stability and reactivity

10.1. Reactivity

No additional information available

10.2. Chemical stability

No additional information available

10.3. Possibility of hazardous reactions

No additional information available

10.4. Conditions to avoid

No additional information available

10.5. Incompatible materials

No additional information available

10.6. Hazardous decomposition products

No additional information available

SECTION 11: Toxicological information

11.1. Information on toxicological effects

Acute toxicity	: Not classified
Skin corrosion/irritation	: Not classified
Serious eye damage/irritation	: Not classified
Respiratory or skin sensitisation	: Not classified
Germ cell mutagenicity	: Suspected of causing genetic defects.
Carcinogenicity	: May cause cancer.
Reproductive toxicity	: Suspected of damaging fertility or the unborn child.
Specific target organ toxicity (single exposure)	: Not classified
Specific target organ toxicity (repeated exposure)	: Not classified
Aspiration hazard	: Not classified

PHENOLPHTHALEIN INDICATOR

Safety Data Sheet

SECTION 12: Ecological information

12.1. Toxicity

No additional information available

12.2. Persistence and degradability

No additional information available

12.3. Bioaccumulative potential

No additional information available

12.4. Mobility in soil

No additional information available

12.5. Results of PBT and vPvB assessment

PHENOLPHTHALEIN INDICATOR (77-09-8)

This substance/mixture does not meet the PBT criteria of REACH regulation, annex XIII

This substance/mixture does not meet the vPvB criteria of REACH regulation, annex XIII

12.6. Other adverse effects

No additional information available

SECTION 13: Disposal considerations

13.1. Waste treatment methods

Product/Packaging disposal recommendations : Dispose of contents/container to ...

SECTION 14: Transport information

In accordance with ADR / RID / IMDG / IATA / ADN

14.1. UN number

UN-No. (ADR) : Not applicable
UN-No. (IMDG) : Not applicable
UN-No.(IATA) : Not applicable
UN-No.(ADN) : Not applicable
UN-No. (RID) : Not applicable

14.2. UN proper shipping name

Proper Shipping Name (ADR) : Not applicable
Proper Shipping Name (IMDG) : Not applicable
Proper Shipping Name (IATA) : Not applicable
Proper Shipping Name (ADN) : Not applicable
Proper Shipping Name (RID) : Not applicable

14.3. Transport hazard class(es)

ADR

PHENOLPHTHALEIN INDICATOR

Safety Data Sheet

Transport hazard class(es) (ADR) : Not applicable

IMDG

Transport hazard class(es) (IMDG) : Not applicable

IATA

Transport hazard class(es) (IATA) : Not applicable

ADN

Transport hazard class(es) (ADN) : Not applicable

RID

Transport hazard class(es) (RID) : Not applicable

14.4. Packing group

Packing group (ADR) : Not applicable

Packing group (IMDG) : Not applicable

Packing group (IATA) : Not applicable

Packing group (ADN) : Not applicable

Packing group (RID) : Not applicable

14.5. Environmental hazards

Dangerous for the environment : No

Marine pollutant : No

Other information : No supplementary information available

14.6. Special precautions for user

- Overland transport

No data available

- Transport by sea

No data available

- Air transport

No data available

- Inland waterway transport

No data available

- Rail transport

No data available

14.7. Transport in bulk according to Annex II of MARPOL 73/78 and the IBC Code

Not applicable

SECTION 15: Regulatory information

15.1. Safety, health and environmental regulations/legislation specific for the substance or mixture

15.1.1. EU-Regulations

No REACH Annex XVII restrictions

Phenolphthalein is on the REACH Candidate List

PHENOLPHTHALEIN INDICATOR is not on the REACH Annex XIV List

PHENOLPHTHALEIN INDICATOR

Safety Data Sheet

15.1.2. National regulations

Germany

12th Ordinance Implementing the Federal Immission Control Act - 12.BImSchV : Is not subject of the 12. BImSchV (Hazardous Incident Ordinance)

Denmark

Recommendations Danish Regulation : Young people below the age of 18 years are not allowed to use the product
Pregnant/breastfeeding women working with the product must not be in direct contact with the product
The requirements from the Danish Working Environment Authorities regarding work with carcinogens must be followed during use and disposal

15.2. Chemical safety assessment

No additional information available

SECTION 16: Other information

Full text of R-, H- and EUH-phrases:

Carc. 1A	Carcinogenicity, Category 1A
Muta. 2	Germ cell mutagenicity, Category 2
Repr. 2	Reproductive toxicity, Category 2
H341	Suspected of causing genetic defects
H350	May cause cancer
H361	Suspected of damaging fertility or the unborn child
R45	May cause cancer
R62	Possible risk of impaired fertility
R68	Possible risk of irreversible effects

This information is based on our current knowledge and is intended to describe the product for the purposes of health, safety and environmental requirements only. It should not therefore be construed as guaranteeing any specific property of the product