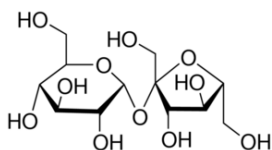


SECTION 1: Identification of the substance/mixture and of the company/undertaking

1.1. Product identifier

Product form	: Substance
Trade name	: SUCROSE EXTRA PURE
EC-No.	: 200-334-9
CAS-No.	: 57-50-1
Product code	: 06155
Type of product	: Carbohydrate
Formula	: C ₁₂ H ₂₂ O ₁₁
Chemical structure	:



Synonyms	: Sugar, β -D-Fructofuranosyl α -D-glucopyranoside, Saccharose, α -D-glucopyranosyl-(1 \rightarrow 2)- β -D-fructofuranoside, β -D-fructofuranosyl-(2 \rightarrow 1)- α -D-glucopyranoside
REACH authorisation exemptions	: Exempted from REACH registration

1.2. Relevant identified uses of the substance or mixture and uses advised against

1.2.1. Relevant identified uses

Use of the substance/mixture	: Laboratory chemicals, Manufacture of substances
------------------------------	---

1.2.2. Uses advised against

No additional information available

1.3. Details of the supplier of the safety data sheet

LOBA CHEMIE PVT.LTD.
107 Wode House Road, Jehangir Villa, Colaba
400005 Mumbai
INDIA
T +91 22 6663 6663 - F +91 22 6663 6699
info@lobachemie.com - www.lobachemie.com

1.4. Emergency telephone number

Emergency number	: + 91 22 6663 6663 (9:00am - 6:00 pm)
------------------	--

SECTION 2: Hazards identification

2.1. Classification of the substance or mixture

Classification according to Regulation (EC) No. 1272/2008 [CLP]

Not classified

Adverse physicochemical, human health and environmental effects

To our knowledge, this product does not present any particular risk, provided it is handled in accordance with good occupational hygiene and safety practice.

2.2. Label elements

Labelling according to Regulation (EC) No. 1272/2008 [CLP]

No labelling applicable

2.3. Other hazards

Contains no PBT/vPvB substances \geq 0.1% assessed in accordance with REACH Annex XIII

SUCROSE EXTRA PURE

Safety Data Sheet

according to Regulation (EC) No. 1907/2006 (REACH) with its amendment Regulation (EU) 2015/830

SECTION 3: Composition/information on ingredients

3.1. Substances

Substance type	: Mono-constituent
Name	: SUCROSE EXTRA PURE
CAS-No.	: 57-50-1
EC-No.	: 200-334-9

3.2. Mixtures

Not applicable

SECTION 4: First aid measures

4.1. Description of first aid measures

First-aid measures after inhalation	: Remove person to fresh air and keep comfortable for breathing.
First-aid measures after skin contact	: Wash skin with plenty of water.
First-aid measures after eye contact	: Rinse eyes with water as a precaution.
First-aid measures after ingestion	: Call a poison center or a doctor if you feel unwell.

4.2. Most important symptoms and effects, both acute and delayed

No additional information available

4.3. Indication of any immediate medical attention and special treatment needed

Treat symptomatically.

SECTION 5: Firefighting measures

5.1. Extinguishing media

Suitable extinguishing media	: Water spray. Dry powder. Foam.
------------------------------	----------------------------------

5.2. Special hazards arising from the substance or mixture

Hazardous decomposition products in case of fire	: Toxic fumes may be released.
--	--------------------------------

5.3. Advice for firefighters

Protection during firefighting	: Do not attempt to take action without suitable protective equipment. Self-contained breathing apparatus. Complete protective clothing.
--------------------------------	--

SECTION 6: Accidental release measures

6.1. Personal precautions, protective equipment and emergency procedures

6.1.1. For non-emergency personnel

Emergency procedures	: Ventilate spillage area. Evacuate unnecessary personnel.
----------------------	--

6.1.2. For emergency responders

Protective equipment	: Do not attempt to take action without suitable protective equipment. Use personal protective equipment as required. For further information refer to section 8: "Exposure controls/personal protection".
Emergency procedures	: Stop release.

6.2. Environmental precautions

Avoid release to the environment.

SUCROSE EXTRA PURE

Safety Data Sheet

according to Regulation (EC) No. 1907/2006 (REACH) with its amendment Regulation (EU) 2015/830

6.3. Methods and material for containment and cleaning up

- Methods for cleaning up : Mechanically recover the product. Clear up rapidly by scoop or vacuum.
Other information : Dispose of materials or solid residues at an authorized site.

6.4. Reference to other sections

For further information refer to section 13.

SECTION 7: Handling and storage

7.1. Precautions for safe handling

- Precautions for safe handling : Ensure good ventilation of the work station. Wear personal protective equipment. Do not get in eyes, on skin, or on clothing.
Hygiene measures : Wash hands and other exposed areas with mild soap and water before eating, drinking or smoking and when leaving work. Do not eat, drink or smoke when using this product. Always wash hands after handling the product.

7.2. Conditions for safe storage, including any incompatibilities

- Storage conditions : Store in original container. Keep container tightly closed. Store in a dry place. Protect from moisture. Store in a well-ventilated place. Keep cool.

7.3. Specific end use(s)

No additional information available

SECTION 8: Exposure controls/personal protection

8.1. Control parameters

8.1.1 National occupational exposure and biological limit values

No additional information available

8.1.2. Recommended monitoring procedures

No additional information available

8.1.3. Air contaminants formed

No additional information available

8.1.4. DNEL and PNEC

No additional information available

8.1.5. Control banding

No additional information available

8.2. Exposure controls

8.2.1. Appropriate engineering controls

Appropriate engineering controls:

Ensure good ventilation of the work station.

8.2.2. Personal protection equipment

Personal protective equipment symbol(s):



8.2.2.1. Eye and face protection

Eye protection:

Chemical goggles or safety glasses

SUCROSE EXTRA PURE

Safety Data Sheet

according to Regulation (EC) No. 1907/2006 (REACH) with its amendment Regulation (EU) 2015/830

8.2.2.2. Skin protection

Hand protection:

Protective gloves

8.2.2.3. Respiratory protection

Respiratory protection:

Wear appropriate mask

8.2.2.4. Thermal hazards

No additional information available

8.2.3. Environmental exposure controls

Environmental exposure controls:

Avoid release to the environment.

SECTION 9: Physical and chemical properties

9.1. Information on basic physical and chemical properties

Physical state	: Solid
Appearance	: Crystalline powder.
Molecular mass	: 342.3 g/mol
Colour	: White.
Odour	: Odourless.
Odour threshold	: No data available
pH	: 5.5 – 7.5 at 25°C
pH solution concentration	: 10 %
Relative evaporation rate (butylacetate=1)	: No data available
Melting point	: 185 – 187
Freezing point	: Not applicable
Boiling point	: No data available
Flash point	: 93.3 °C
Auto-ignition temperature	: Not applicable
Decomposition temperature	: No data available
Flammability (solid, gas)	: Non flammable.
Vapour pressure	: No data available
Relative vapour density at 20 °C	: No data available
Relative density	: No data available
Density	: 1.58 g/cm ³
Solubility	: Water: 342 g/l at 20 °C - completely soluble
Partition coefficient n-octanol/water (Log Pow)	: -3.7
Viscosity, kinematic	: Not applicable
Viscosity, dynamic	: No data available
Explosive properties	: No data available
Oxidising properties	: No data available
Explosive limits	: Not applicable

9.2. Other information

No additional information available

SECTION 10: Stability and reactivity

10.1. Reactivity

The product is non-reactive under normal conditions of use, storage and transport.

10.2. Chemical stability

Stable under normal conditions.

SUCROSE EXTRA PURE

Safety Data Sheet

according to Regulation (EC) No. 1907/2006 (REACH) with its amendment Regulation (EU) 2015/830

10.3. Possibility of hazardous reactions

No dangerous reactions known under normal conditions of use.

10.4. Conditions to avoid

Direct sunlight. Air contact. Moisture.

10.5. Incompatible materials

No additional information available

10.6. Hazardous decomposition products

Under normal conditions of storage and use, hazardous decomposition products should not be produced.

SECTION 11: Toxicological information

11.1 Information on toxicological effects

Acute toxicity (oral)	: Not classified
Acute toxicity (dermal)	: Not classified
Acute toxicity (inhalation)	: Not classified
Skin corrosion/irritation	: Not classified pH: 5.5 – 7.5 at 25°C
Serious eye damage/irritation	: Not classified pH: 5.5 – 7.5 at 25°C
Respiratory or skin sensitisation	: Not classified
Germ cell mutagenicity	: Not classified
Carcinogenicity	: Not classified
Reproductive toxicity	: Not classified
STOT-single exposure	: Not classified
STOT-repeated exposure	: Not classified
Aspiration hazard	: Not classified

SUCROSE EXTRA PURE (57-50-1)

Viscosity, kinematic	Not applicable
----------------------	----------------

SECTION 12: Ecological information

12.1. Toxicity

Ecology - general	: The product is not considered harmful to aquatic organisms nor to cause long-term adverse effects in the environment.
Hazardous to the aquatic environment, short-term (acute)	: Not classified
Hazardous to the aquatic environment, long-term (chronic)	: Not classified

12.2. Persistence and degradability

No additional information available

12.3. Bioaccumulative potential

SUCROSE EXTRA PURE (57-50-1)

Partition coefficient n-octanol/water (Log Pow)	-3.7
---	------

12.4. Mobility in soil

No additional information available

SUCROSE EXTRA PURE

Safety Data Sheet

according to Regulation (EC) No. 1907/2006 (REACH) with its amendment Regulation (EU) 2015/830

12.5. Results of PBT and vPvB assessment

No additional information available

12.6. Other adverse effects

No additional information available

SECTION 13: Disposal considerations

13.1. Waste treatment methods

Waste treatment methods : Dispose of contents/container in accordance with licensed collector's sorting instructions.

SECTION 14: Transport information

In accordance with ADR / IMDG / IATA / ADN / RID

14.1 UN number

UN-No. (ADR) : Not regulated
UN-No. (IMDG) : Not regulated
UN-No. (IATA) : Not regulated
UN-No. (ADN) : Not regulated
UN-No. (RID) : Not regulated

14.2. UN proper shipping name

Proper Shipping Name (ADR) : Not regulated
Proper Shipping Name (IMDG) : Not regulated
Proper Shipping Name (IATA) : Not regulated
Proper Shipping Name (ADN) : Not regulated
Proper Shipping Name (RID) : Not regulated

14.3. Transport hazard class(es)

ADR
Transport hazard class(es) (ADR) : Not regulated

IMDG
Transport hazard class(es) (IMDG) : Not regulated

IATA
Transport hazard class(es) (IATA) : Not regulated

ADN
Transport hazard class(es) (ADN) : Not regulated

RID
Transport hazard class(es) (RID) : Not regulated

14.4. Packing group

Packing group (ADR) : Not regulated
Packing group (IMDG) : Not regulated
Packing group (IATA) : Not regulated
Packing group (ADN) : Not regulated
Packing group (RID) : Not regulated

14.5. Environmental hazards

Dangerous for the environment : No
Marine pollutant : No
Other information : No supplementary information available

SUCROSE EXTRA PURE

Safety Data Sheet

according to Regulation (EC) No. 1907/2006 (REACH) with its amendment Regulation (EU) 2015/830

14.6. Special precautions for user

Overland transport

Not regulated

Transport by sea

Not regulated

Air transport

Not regulated

Inland waterway transport

Not regulated

Rail transport

Not regulated

14.7. Transport in bulk according to Annex II of Marpol and the IBC Code

Not applicable

SECTION 15: Regulatory information

15.1. Safety, health and environmental regulations/legislation specific for the substance or mixture

15.1.1. EU-Regulations

REACH Annex XVII (Restriction List)

No REACH Annex XVII restrictions

REACH Annex XIV (Authorisation List)

SUCROSE EXTRA PURE is not on the REACH Annex XIV List

REACH Candidate List (SVHC)

SUCROSE EXTRA PURE is not on the REACH Candidate List

PIC Regulation (Prior Informed Consent)

SUCROSE EXTRA PURE is not subject to Regulation (EU) No 649/2012 of the European Parliament and of the Council of 4 July 2012 concerning the export and import of hazardous chemicals.

POP Regulation (Persistent Organic Pollutants)

SUCROSE EXTRA PURE is not subject to Regulation (EU) No 2019/1021 of the European Parliament and of the Council of 20 June 2019 on persistent organic pollutants

Ozone Regulation (1005/2009)

SUCROSE EXTRA PURE is not subject to REGULATION (EU) No 1005/2009 OF THE EUROPEAN PARLIAMENT AND OF THE COUNCIL of 16 September 2009 on substances that deplete the ozone layer.

Explosives Precursors Regulation (2019/1148)

Contains no substance subject to Regulation (EU) 2019/1148 of the European Parliament and of the Council of 20 June 2019 on the marketing and use of explosives precursors.

Drug Precursors Regulation (273/2004)

Contains no substance(s) listed on the Drug Precursors list (Regulation EC 273/2004 on drug precursors)

15.1.2. National regulations

Germany

Water hazard class (WGK)

: WGK 1, Slightly hazardous to water (Classification according to AwSV; ID No. 9667).

Hazardous Incident Ordinance (12. BImSchV)

: Is not subject of the Hazardous Incident Ordinance (12. BImSchV)

Netherlands

SZW-lijst van kankerverwekkende stoffen

: The substance is not listed

SZW-lijst van mutagene stoffen

: The substance is not listed

SUCROSE EXTRA PURE

Safety Data Sheet

according to Regulation (EC) No. 1907/2006 (REACH) with its amendment Regulation (EU) 2015/830

SZW-lijst van reprotoxische stoffen – Borstvoeding : The substance is not listed
SZW-lijst van reprotoxische stoffen – Vruchtbaarheid : The substance is not listed
SZW-lijst van reprotoxische stoffen – Ontwikkeling : The substance is not listed

Denmark

Class for fire hazard : Class III-1
Store unit : 50 liter
Classification remarks : Flammable according to the Danish Ministry of Justice; Emergency management guidelines for the storage of flammable liquids must be followed

15.2. Chemical safety assessment

No chemical safety assessment has been carried out

SECTION 16: Other information

Abbreviations and acronyms:	
ADN	European Agreement concerning the International Carriage of Dangerous Goods by Inland Waterways
ADR	European Agreement concerning the International Carriage of Dangerous Goods by Road
ATE	Acute Toxicity Estimate
BCF	Bioconcentration factor
BLV	Biological limit value
BOD	Biochemical oxygen demand (BOD)
COD	Chemical oxygen demand (COD)
DMEL	Derived Minimal Effect level
DNEL	Derived-No Effect Level
EC-No.	European Community number
EC50	Median effective concentration
EN	European Standard
IARC	International Agency for Research on Cancer
IATA	International Air Transport Association
IMDG	International Maritime Dangerous Goods
LC50	Median lethal concentration
LD50	Median lethal dose
LOAEL	Lowest Observed Adverse Effect Level
NOAEC	No-Observed Adverse Effect Concentration
NOAEL	No-Observed Adverse Effect Level
NOEC	No-Observed Effect Concentration
OECD	Organisation for Economic Co-operation and Development
OEL	Occupational Exposure Limit
PBT	Persistent Bioaccumulative Toxic
PNEC	Predicted No-Effect Concentration
RID	Regulations concerning the International Carriage of Dangerous Goods by Rail
SDS	Safety Data Sheet
STP	Sewage treatment plant

SUCROSE EXTRA PURE

Safety Data Sheet

according to Regulation (EC) No. 1907/2006 (REACH) with its amendment Regulation (EU) 2015/830

Abbreviations and acronyms:	
ThOD	Theoretical oxygen demand (ThOD)
TLM	Median Tolerance Limit
VOC	Volatile Organic Compounds
CAS-No.	Chemical Abstract Service number
N.O.S.	Not Otherwise Specified
vPvB	Very Persistent and Very Bioaccumulative
ED	Endocrine disrupting properties

Safety Data Sheet (SDS), EU

This information is based on our current knowledge and is intended to describe the product for the purposes of health, safety and environmental requirements only. It should not therefore be construed as guaranteeing any specific property of the product.