

CHITOSAN-FROM SHRIMP SHELLS

□□□□□□□□

□□ (EU) 2020/878 □□ □□ □□ REACH □□ (EC) 1907/2006 □□ □□
□□ □□□□: 2/17/2017 □□ □□□□: 11/28/2025 □□ □□: 2/17/2017 □□: 1.0

□□ 1: □□□□ □□ □□ □□

1.1. □□□□

□□ □□

□□ □□

CAS □□

□□ □□

□□ □□

□□ □□

: □□

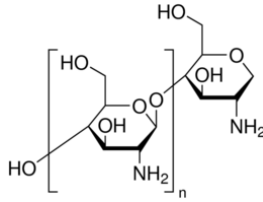
: CHITOSAN-FROM SHRIMP SHELLS

: 9012-76-4

: 02697

: Polysaccharides

:



□□ □□

: Deacetylated Chitin, Poly(D-glucosamine)

1.2. □□□□ □□ □□□□ □□ □□ □□ □□

□□ □□ □□

□□□□/□□□□ □□

: Laboratory chemicals, Manufacture of substances

1.3. □□□□□□□□ □□□□ □□

LOBA CHEMIE PVT.LTD.

107 Wode House Road, Jehangir Villa, Colaba

400005 Mumbai

INDIA

T +91 22 6663 6663, F +91 22 6663 6699

info@lobachemie.com, www.lobachemie.com

1.4. □□□□□□

□□ □□ □□

: + 91 22 6663 6663 (9:00am - 6:00 pm)

□□ 2: □□□·□□□

2.1. □□□·□□□ □□

Regulation (EC) No.1272/2008 [CLP] □□ □□ □□

□□□□ □□

□□□□□, □□ □□ □ □□□□□□□

To our knowledge, this product does not present any particular risk, provided it is handled in accordance with good occupational hygiene and safety practice.

2.2. □□□□□□□ □□□ □□□□ □□

□□ (EC) No. 1272/2008 □□ □□ □□ [CLP]

□□ □□ □□

2.3. □□ □□

□□ □□

□□ 3: □□□□□ □□ □□ □□

3.1. □□□□

□□ □□

: □□□□□□

CHITOSAN-FROM SHRIMP SHELLS

□□□□□□□□

□□ (EU) 2020/878 □□ □□□ REACH □□ (EC) 1907/2006 □□ □□

□□ □□ □□

□□ □□

: Do not attempt to take action without suitable protective equipment. □□□ □□ □□□□ □□□□□□. □□ □□□ □□□ □□ 8: "□□□□ □ □□□□□" □ □□□□□.

□□ □□

: Stop release. Evacuate unnecessary personnel.

6.2. □□□ □□□□ □□ □□□ □□□□

□□□□ □□□□ □□□□.

6.3. □□ □□ □□ □□

□□□□

: Using a clean shovel, put the material in a dry container and cover without compressing it.

□□ □□

: Mechanically recover the product. On land, sweep or shovel into suitable containers.

□ □□ □□□□

: Dispose of materials or solid residues at an authorized site.

6.4. □□ □□ □□

For further information refer to section 13.

□□ 7: □□ □ □□□□

7.1. □□□□□□

□□ □ □□□□□ □□ □□

: □□□□ □□ □□□□□ □□□ □□□ □□□□ □□.

□□□□□□

: Ensure good ventilation of the work station. □□ □□□□ □□□□□□. □□ □ □□□ □□□ □□□□□.

□□ □□

: Wash hands and other exposed areas with mild soap and water before eating, drinking or smoking and when leaving work. □ □□□ □□□ □□□ □□□, □□□□ □□□□ □□□□. Always wash hands after handling the product.

7.2. □□□□ □□□ □□□ □□□ □□ □□

□□□ □□□

: Keep in a cool, well-ventilated place away from heat.

□□ □□

: □□□ □ □□ □□ □□□□□□. □□□ □□□ □□□□□□. Store in original container.

□□□

: Store always product in container of same material as original container.

7.3. □□ □□ □□

□□ □□

□□ 8: □□□□ □ □□□□□

8.1. □□ □□ □□

□□ □□

8.2. □□□□

□□□ □□□ □□

□□□ □□□ □□:

Ensure good ventilation of the work station.

□□ □□□

□□ □□□:

Wear recommended personal protective equipment.

□□ □□ □□ □□:



□□ □□ □□□

□ □□:

Chemical goggles or safety glasses

CHITOSAN-FROM SHRIMP SHELLS

□□□□□□□□

□□ (EU) 2020/878 □□ □□ □□ REACH □□ (EC) 1907/2006 □□ □□

Skin protection

□□ □□:

Wear a mask

□□ □□:

Protective gloves

□□ □□ □□

□□ □□ □□:

Wear appropriate mask

□□ □□ □□

□□ □□ □□:

□□□□ □□□□ □□□□.

□□ 9: □□□□ □□

9.1. □□□□ □□□□ □□ □□ □□

| | |
|---|-------------------------------|
| □□ □□ | : □□ |
| □□ | : almost white to beige. |
| □□ | : Powder. Flakes. |
| □□ | : Odourless. |
| □□ □□ | : □□□□ |
| □□□ | : 102.5 °C |
| □□□ | : □□□□ |
| □□ □□□□ □□□ □□ | : □□□□ |
| □□□ | : □□□ |
| □□ □□□ | : □□□□ |
| □□ □□□ | : □□□□ |
| □□□ | : □□□□ |
| □□□□ □□ | : □□□□ |
| □□ □□ | : □□□□ |
| pH | : □□□□ |
| pH □□ | : □□□□ |
| □□(□□□) | : □□□□ |
| □□(□□□□) | : 200 cP (1% solution; 20 °C) |
| □□□ | : □: Insoluble in water |
| Partition coefficient n-octanol/water (Log Kow) | : □□□□ |
| □□□ | : □□□□ |
| 50°C□□□□ □□□ | : □□□□ |
| □□ | : 1 g/cm ³ |
| □□ | : □□□□ |
| 20°C□□□□ □□ □□ □□ | : □□□□ |
| Particle size | : □□□□ |

9.2. □□ □□ □□□□

□□ □□

□□ 10: □□□ □□□□

10.1. □□□

The product is non-reactive under normal conditions of use, storage and transport.

10.2. □□□ □□□

Stable under normal conditions.

10.3. □□ □□□ □□□

No dangerous reactions known under normal conditions of use.

CHITOSAN-FROM SHRIMP SHELLS

□□□□□□□□

□□ (EU) 2020/878 □□ □□□ REACH □□ (EC) 1907/2006 □□ □□

10.4. □□□ □□□

Extremely high or low temperatures. □□□□.

10.5. □□□ □□□

Oxidizing agent.

10.6. □□□ □□□□ □□□□

Under normal conditions of storage and use, hazardous decomposition products should not be produced.

□□ 11: □□□ □□ □□

11.1. □□ (EC) No 1272/2008 □□□□, □□□ □□□ □□ □□

- □□ (□□) : □□□□ □□
- □□ (□□) : □□□□ □□
- □□ (□□) : □□□□ □□
- □□□ □□ □□ : □□□□ □□
- □ □□ □□ □□ : □□□□ □□
- □□ □□ □□ : □□□□ □□
- □□□□ : □□□□ □□
- : □□□□ □□
- : □□□□ □□
- □□□□ □□ (1□ □□) : □□□□ □□
- □□□□ □□ (□□ □□) : □□□□ □□
- □□□ : □□□□ □□

| CHITOSAN-FROM SHRIMP SHELLS (9012-76-4) | |
|---|------|
| □□(□□□) | □□□□ |

11.2. □□ □□ □□

□□ □□

□□ 12: □□□ □□□ □□

12.1. □□

- - □□ : The product is not considered harmful to aquatic organisms nor to cause long-term adverse effects in the environment.
- □□□□ □□□ : □□□□ □□
- □□□□ □□□ : □□□□ □□

12.2. □□□ □□□□

| CHITOSAN-FROM SHRIMP SHELLS (9012-76-4) | |
|---|----------|
| □□□ □□□□ | □□ □□ □□ |

12.3. □□ □□□

□□ □□

12.4. □□ □□□

□□ □□

12.5. PBT □ vPvB □□ □□

□□ □□

CHITOSAN-FROM SHRIMP SHELLS

□□□□□□□□

□□ (EU) 2020/878 □□ □□□ REACH □□ (EC) 1907/2006 □□ □□

12.6. □□□ □□ □□

□□ □□

12.7. □□ □□ □□

□□ □□

□□ 13: □□□ □□□□

13.1. □□□ □□□

- □□(□□□) : Disposal must be done according to official regulations.
- □□□ : Dispose of contents/container in accordance with licensed collector's sorting instructions.
- □□ □□ □□ : Disposal must be done according to official regulations.
- /□□ □□ □□□□ : Comply with applicable regulations for solid waste disposal. Disposal must be done according to official regulations.
- □□ : Do not re-use empty containers.

□□ 14: □□□ □□□ □□

ADR / IMDG / IATA / ADN / RID □□ □□

14.1. UN □□ □□ ID □□

□□ □□□□ □□□□

14.2. UN □□ □□□

- □□□ (ADR) : Not regulated
- □□□ (IMDG) : Not regulated
- □□□ (IATA) : Not regulated
- □□□ (ADN) : Not regulated
- □□□ (RID) : Not regulated

14.3. □□□□□ □□□ □□

ADR
□□□□□ □□□ □□ (ADR) : Not regulated

IMDG
□□□□□ □□□ □□ (IMDG) : Not regulated

IATA
□□□□□ □□□ □□ (IATA) : Not regulated

ADN
□□□□□ □□□ □□ (ADN) : Not regulated

RID
□□□□□ □□□ □□ (RID) : Not regulated

14.4. □□□□

- □□ (ADR) : Not regulated
- □□(IMDG) : Not regulated
- □□ (IATA) : Not regulated
- □□(ADN) : Not regulated
- □□(RID) : Not regulated

14.5. □□ □□□

□□ □□ □□□□ : □□ □□ □□ □□

CHITOSAN-FROM SHRIMP SHELLS

□□□□□□□□

□□ (EU) 2020/878 □□ □□□ REACH □□ (EC) 1907/2006 □□ □□

SZW-lijst van reprotoxische stoffen – Ontwikkeling : □□□ □□□□ □□□□□.

□□□

□□□ □□ □□

: Act of 25 February 2011 on chemical substances and their mixtures (J. o L. No. 63, item 322 as amended; consolidated text J. o L. 2019, item 1225).
 Act of 14 December 2012 on waste (J. o L. 2013, item 322 as amended; consolidated text J. o L. 2020, item 797).
 The announcement of Marshal of the Sejm of the Republic of Poland dated 19 October 2016 concerning the consolidated text announcement of the decree on the management of packaging and packaging waste (J. o L. 2016, item 1863 as amended).
 Decree of the Minister of Environment of 14 December 2014 on the catalogue of waste (J. o L. 2014, item 1923).
 Act of 19 August 2011 on the Carriage of Dangerous Goods (J. o L. 2011 No. 227, item 1367 as amended; consolidated text J. o L. 2020, item 154).
 Regulation of the Minister of Family, Labour and Social Policy of 12 June 2018 on the highest permissible concentration and intensity of noxious agents for health at work environment (J. o L. item 1286 as amended).
 The announcement of Minister of Health dated 9 September 2016 concerning the consolidated text announcement of the decree of the Minister of Health of 30 December 2004 on health and safety at work related to exposure to chemical agents at work (J. o L. of 16 September 2016, item 1488)
 Regulation of the Minister of Health of 2 February 2011 on tests and measurements of the noxious agents for health at work environment (J. o L. No. 33, item 166 as amended).
 Regulation of the Minister of Environment of 9 December 2003 on particularly hazardous substances to the environment (J. o L. No. 217, item 2141).
 ADR Agreement: Government Statement of 13 March 2023 on the entry into force of amendments to Annexes A and B to the Agreement concerning the International Carriage of Dangerous Goods by Road (ADR), signed in Geneva on 30 September 1957 (J. o. L. 2023, item 891)

15.2. □□ □□ □□□ □□

No chemical safety assessment has been carried out

□□ 16: □ □□ □□□□

| □□ □□□□□: | |
|-----------|---|
| ACGIH | American Conference of Government Industrial Hygienists |
| ADN | European Agreement concerning the International Carriage of Dangerous Goods by Inland Waterways |
| ADR | European Agreement concerning the International Carriage of Dangerous Goods by Road |
| ATE | Acute Toxicity Estimate |
| BCF | Bioconcentration factor |
| BLV | □□ □□ □ |
| BOD | Biochemical oxygen demand (BOD) |
| CAS □□ | □□□□ □□ □□ □□(CAS) |
| CLP | Classification Labelling Packaging Regulation; Regulation (EC) No 1272/2008 |
| COD | □□□ □□ □□□ |
| CSA | □□ □□ □□□ □□ |
| DMEL | Derived Minimal Effect level |
| DNEL | □□ □□□ □□ |
| EC □□ | □□ □□□ □□ |
| EC50 | Median effective concentration |
| ED | □□□ □□□□ |
| EN | □□ □□ |

CHITOSAN-FROM SHRIMP SHELLS

□□□□□□□□

□□ (EU) 2020/878 □□ □□□ REACH □□ (EC) 1907/2006 □□ □□

| □□ □ □□□□□: | |
|-------------|--|
| EWC | European waste catalogue |
| IARC | International Agency for Research on Cancer |
| IATA | International Air Transport Association |
| IMDG | International Maritime Dangerous Goods |
| LC50 | Median lethal concentration |
| LD50 | Median lethal dose |
| LOAEL | Lowest Observed Adverse Effect Level |
| Log Kow | Partition coefficient n-octanol/water (Log Kow) |
| Log Pow | Partition coefficient n-octanol/water (Log Pow) |
| MAK | maximum workplace concentration |
| NOAEC | No-Observed Adverse Effect Concentration |
| NOAEL | No-Observed Adverse Effect Level |
| NOEC | No-Observed Effect Concentration |
| N.O.S. | Not Otherwise Specified |
| OECD | Organisation for Economic Co-operation and Development |
| OEL | □□□ □□ □□ |
| OSHA | Occupational Safety & Health Administration |
| PBT | Persistent Bioaccumulative Toxic |
| PNEC | □□ □□□ □□ |
| PPE | □□ □□□ |
| RID | Regulations concerning the International Carriage of Dangerous Goods by Rail |
| SDS | □□□□□□□□ |
| STP | Sewage treatment plant |
| TF | □□□ □□ |
| ThOD | Theoretical oxygen demand (ThOD) |
| TLM | Median Tolerance Limit |
| TWA | Time Weighted Average |
| COV | Volatile Organic Compounds |
| vPvB | Very Persistent and Very Bioaccumulative |
| UFI | □□ □□ □□□ |

□□□□□□□□(SDS), EU

□ □□□ □□ □□□ □□□□ □□ □□□ □□ □□□ □□, □□ □ □□ □□□ □□□ □□ □□□□ □□ □□□□. □□□□ □□□ □□□ □□□ □□□ □□□ □□□□ □□□□.