

# ETHYL VANILLIN EXTRA PURE

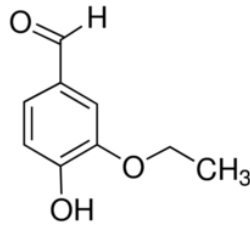
□□□□□□□□

□□ (EU) 2020/878 □□ □□ □□ REACH □□ (EC) 1907/2006 □□ □□  
□□ □□□□: 9/27/2017 □□ □□□□: 5/8/2025 □□ □□: 9/27/2017 □□: 1.0

## □□ 1: □□□□□ □□□ □□ □□

### 1.1. □□□□

□□ □□ : □□  
 □□ □□ : ETHYL VANILLIN EXTRA PURE  
 IUPAC □□ : 3-Ethoxy-4-hydroxybenzaldehyde  
 EC □□ : 204-464-7  
 CAS □□ : 121-32-4  
 □□ □□ : 3755P  
 □□ □□ : Aldehydes  
 □□ □□ : C9H10O3  
 □□ □□ :



□□ □□ : Bourbonal

### 1.2. □□□□ □□ □□□□ □□ □□ □□ □□

□□ □□ □□ : Industrial  
 □□/□□□ □□ □□ : For professional use only  
 □□□□/□□□□ □□ : Laboratory chemicals  
 □□□ □□

### 1.3. □□□□□□□□ □□□ □□

LOBA CHEMIE PVT.LTD.  
 107 Wode House Road, Jehangir Villa, Colaba  
 400005 Mumbai  
 INDIA  
 T +91 22 6663 6663, F +91 22 6663 6699  
[info@lobachemie.com](mailto:info@lobachemie.com), [www.lobachemie.com](http://www.lobachemie.com)

### 1.4. □□□□□□

□□ □□ □□ : + 91 22 6663 6663 (9:00am - 6:00 pm)

## □□ 2: □□□·□□□

### 2.1. □□□·□□□ □□

Regulation (EC) No.1272/2008 [CLP]□ □□ □□

□□ □□ (□□), □□ 4 H302  
 □□ □ □□□/□ □□□, □□ 2 H319  
 □□(H) □□ □ EUH □□ □□: 16□ □□.

□□□□□, □□ □□ □ □□□□□□□

□□□ □□□. □□ □□ □□□ □□□.

# ETHYL VANILLIN EXTRA PURE

□□□□□□□□

□□ (EU) 2020/878 □□ □□□ REACH □□ (EC) 1907/2006 □□ □□

## 2.2. □□□□□□ □□ □□□□ □□

□□ (EC) No. 1272/2008 □□ □□ □□ [CLP]

□□ □□ □□□□ (CLP)

:



GHS07

□□□ (CLP)

: □□

□□·□□ □□ (CLP)

: H302 - □□□ □□□.

H319 - □□ □□ □□□ □□□.

□□ □□ □□ (CLP)

: P264 - □□ □□□ hands and forearms □(□) □□□ □□□□.

P280 - □□□□, □□□, □□□, □□□□□ □(□) □□□□□.

P301+P312 - □□ □□: □□□□ □□□ □□ □□ □□ □□ □(□) □□□□.

P305+P351+P338 - □□ □□□□: □ □□ □□ □□□□ □□□□. □□□□ □□□ □□□□□□. □□ □□□.

## 2.3. □□ □□

Contains no PBT and/or vPvB substances  $\geq 0.1\%$  assessed in accordance with REACH Annex XIII

## □□ 3: □□□□□ □□ □ □□□

### 3.1. □□□□

□□ □□

: □□□□□□

□□	□□□□	%
ETHYL VANILLIN	CAS □□: 121-32-4 EC □□: 204-464-7	100

## □□ 4: □□□□□□

### 4.1. □□□□ □□

□□ □□ □□

: □□□□ □□□ □□□□(□□) □□ □□□ □□□.

□□□□ □□

: □□□ □□□ □□ □□□ □□□ □□□ □□□ □□□ □□□□. Give oxygen or artificial respiration if necessary. □□□□ □□/□□□ □□□□.

□□□ □□□□ □□

: □□□ □□□ □□ □□□□ □□□□□. □□□ □□□ □□□□. □□□□ □□/□□□ □□□□. Wash skin with plenty of water.

□□ □□□□ □□

: □ □□ □□ □□□□ □□□□. □□ □□□□ □□/□□□ □□□□. □□□□ □□□□□□□ □□□□□. □□ □□□□. □□ □□□□ □□□□: □□□□ □□/□□□ □□□□.

□□□ □□

: Rinse mouth out with water. □□□□ □□/□□□ □□□□. □□□ □□ □□□. □□ □□□□□. □□□□ □□ □□□□(□□) □□□ □□□□.

First-aid measures for first aider

: □□□□ □□□□ □□□ □□ □□ □□□ □□□□ □□□.

### 4.2. □□ □ □□□□ □□ □□□ □□ □ □□

□□ □ □□/□□

: □□□ □□□ □□□ □ □□.

□□ □□ □ □□/□□

: □□□ □□□ □□□.

□ □□ □ □□/□□

: □□ □□ □□□ □□□. Eye irritation.

□□ □ □□/□□

: □□□ □□□.

### 4.3. □□□□ □□ □ □□ □□ □□ □□ □□

Treat symptomatically.

# ETHYL VANILLIN EXTRA PURE

□□□□□□□□

□□ (EU) 2020/878 □□ □□□ REACH □□ (EC) 1907/2006 □□ □□

## □□ 5: □□·□□□□ □□□□

### 5.1. □□□ □□□

- □□□ : Water spray. Foam. Dry powder. Carbon dioxide.
- □□□ : Do not use a heavy water stream.

### 5.2. □□□□□□□ □□□ □□ □□□

- □□ : No fire hazard.
- □□ : No direct explosion hazard.
- □ □□□ □□□ □□ : Toxic fumes may be released.

### 5.3. □□□□ □□□□ □ □□□□

- □□ : Fight fire from safe distance and protected location. Do not enter fire area without proper protective equipment, including respiratory protection.
- □□ □ □□ : Do not enter fire area without proper protective equipment, including respiratory protection. Do not attempt to take action without suitable protective equipment. □□□ □□□□□. Complete protective clothing.

## □□ 6: □□□□□ □□□□

### 6.1. □□□ □□□□ □□ □□□ □□□□ □ □□□

- □□ : □□□ □□□ □□ □□□□□ □□□ □□ □□□ □□. □□□□□ □□□□ □□ □□□□ □□□□□□.
- □□ □□ : Wear recommended personal protective equipment.
- □□ : Ventilate spillage area. Evacuate unnecessary personnel. □□ □ □□□ □□□ □□□□.
- □□ □□ : Do not attempt to take action without suitable protective equipment. □□□ □□ □□□□ □□□□□. □□ □□□ □□□ □□ 8: "□□□□ □ □□□□□" □ □□□□□.
- □□ : Ventilate area. Evacuate unnecessary personnel.

### 6.2. □□□ □□□□ □□ □□□ □□□□

□□□□ □□□□ □□□.

### 6.3. □□ □□ □□ □□

- : Using a clean shovel, put the material in a dry container and cover without compressing it.
- □□ : Mechanically recover the product. □□□□ □□□□. On land, sweep or shovel into suitable containers.
- □□ □□□□ : Dispose of materials or solid residues at an authorized site.

### 6.4. □□ □□ □□

For further information refer to section 13.

## □□ 7: □□ □ □□□□

### 7.1. □□□□□□

- □ □□□□□ □□ □□ : □□□□ □□ □□□□□ □□□ □□□ □□□ □□.
- : Ensure good ventilation of the work station. □□ □ □□□ □□□ □□□□. Do not breathe vapours. □□ □□□□ □□□□□.
- □□ : Wash hands and other exposed areas with mild soap and water before eating, drinking or smoking and when leaving work. □ □□□ □□□ □□□ □□□, □□□□ □□□□ □□□. Always wash hands after handling the product.

### 7.2. □□□□ □□□ □□□ □□□ □□ □□

- □□ : Keep in a cool, well-ventilated place away from heat.

# ETHYL VANILLIN EXTRA PURE

□□□□□□□□

□□ (EU) 2020/878 □□ □□□ REACH □□ (EC) 1907/2006 □□ □□

□□ □□ : □□□ □□□ □□□□□. □□□ □ □□ □□ □□□□□. □□□□ □□□□□.  
□□ □□ : Store always product in container of same material as original container.

## 7.3. □□ □□ □□

□□ □□

## □□ 8: □□□□ □ □□□□□

### 8.1. □□ □□ □□

□□ □□

### 8.2. □□□□

□□□ □□□ □□

□□□ □□□ □□:

Ensure good ventilation of the work station.

□□ □□□

□□ □□□:

Wear recommended personal protective equipment.

□□ □□ □□ □□:



□ □ □ □ □□

□ □□:

Chemical goggles or safety glasses

### Skin protection

□□ □□:

Wear a mask

□ □□:

Protective gloves

□□□ □□

□□□ □□:

Wear appropriate mask

□□ □□ □□

□□ □□ □□:

□□□□ □□□□ □□□.

## □□ 9: □□□□□ □□

### 9.1. □□□□ □□□□□ □□□ □□ □□

□□□ □□

□□

□□

□□□

□□

□□ □□

□□□

□□□

□□ □□□□ □□□ □□

□□□

□□ □□□

: □□

: White.

: Crystalline powder.

: 166.17 g/mol

: vanilla-like.

: □□□□

: 75 – 79 °C

: □□□□

: 295 °C

: □□□

: □□□□

# ETHYL VANILLIN EXTRA PURE

□□□□□□□□

□□ (EU) 2020/878 □□ □□ □□ REACH □□ (EC) 1907/2006 □□ □□

□□ □□□	:	□□□□
□□□	:	145 °C
□□□□ □□	:	□□□□
□□ □□	:	□□□□
pH	:	□□□□
pH □□	:	□□□□
□□(□□□)	:	□□□□
□□□	:	□: 2822 mg/l at 25 °C - Slightly soluble in water
		□□□: Soluble in Ethanol
		□□□: Soluble in Ether
Partition coefficient n-octanol/water (Log Kow)	:	□□□□
□□□	:	< 0.01 mmHg at 25° C
50°C □□□ □□□	:	□□□□
□□	:	1.186 g/cm <sup>3</sup>
□□	:	□□□□
20°C □□□ □□ □□ □□	:	□□□□
Particle size	:	□□□□

## 9.2. □□ □□ □□□□

□□ □□

## □□ 10: □□□ □□□□

### 10.1. □□□

The product is non-reactive under normal conditions of use, storage and transport.

### 10.2. □□□ □□□

Stable under normal conditions.

### 10.3. □□ □□□ □□□

No dangerous reactions known under normal conditions of use.

### 10.4. □□□ □□□

□□□□. Extremely high or low temperatures.

### 10.5. □□□ □□□

□□ □□

### 10.6. □□□ □□□□ □□□□

Under normal conditions of storage and use, hazardous decomposition products should not be produced.

## □□ 11: □□□ □□ □□

### 11.1. □□ (EC) No 1272/2008 □□□□, □□□ □□□ □□ □□

□□ □□ (□□)	:	□□□ □□□.
□□ □□ (□□)	:	□□□□ □□
□□ □□ (□□)	:	□□□□ □□
□□ □□□ □□ □□□	:	□□□□ □□
□□ □□ □□ □□ □□□	:	□□ □□ □□□ □□□.
□□□ □□ □□ □□□	:	□□□□ □□
□□□□ □□□□	:	□□□□ □□
□□□	:	□□□□ □□
□□□□	:	□□□□ □□
□□ □□□□ □□ (1□ □□)	:	□□□□ □□
□□ □□□□ □□ (□□ □□)	:	□□□□ □□
□□ □□□	:	□□□□ □□

# ETHYL VANILLIN EXTRA PURE

□□□□□□□□

□□ (EU) 2020/878 □□ □□□ REACH □□ (EC) 1907/2006 □□ □□

## ETHYL VANILLIN EXTRA PURE (121-32-4)

□□(□□□)	□□□□
---------	------

## ETHYL VANILLIN (121-32-4)

□□(□□□)	□□□□
---------	------

### 11.2. □□ □□ □□

□□ □□

## □□ 12: □□□ □□□ □□

### 12.1. □□

- - □□ : The product is not considered harmful to aquatic organisms nor to cause long-term adverse effects in the environment.
- □□□□ □□□□ : □□□□ □□
- □□□□ □□□□ : □□□□ □□

### 12.2. □□□ □□□□

## ETHYL VANILLIN EXTRA PURE (121-32-4)

□□□ □□□□	□□ □□ □□
----------	----------

## ETHYL VANILLIN (121-32-4)

□□□ □□□□	□□ □□ □□
----------	----------

### 12.3. □□ □□□

□□ □□

### 12.4. □□ □□□

□□ □□

### 12.5. PBT □ vPvB □□ □□

□□ □□

### 12.6. □□□ □□□□

□□ □□

### 12.7. □□ □□ □□

□□ □□

## □□ 13: □□□ □□□□

### 13.1. □□□ □□□

- □□(□□□) : Disposal must be done according to official regulations.
- □□□ : Dispose of contents/container in accordance with licensed collector's sorting instructions.
- □□ □□ □□ : Disposal must be done according to official regulations.
- /□□ □□ □□□□ : Comply with applicable regulations for solid waste disposal. Disposal must be done according to official regulations.
- □□ : Do not re-use empty containers.

## □□ 14: □□□ □□□ □□

ADR / IMDG / IATA / ADN / RID □□ □□

# ETHYL VANILLIN EXTRA PURE

□□□□□□□□

□□ (EU) 2020/878 □□ □□□ REACH □□ (EC) 1907/2006 □□ □□

## 14.1. UN □□ □□ ID □□

□□ □□□□ □□□□

## 14.2. UN □□ □□□□

□□ □□□ (ADR)	: Not regulated
□□ □□□ (IMDG)	: Not regulated
□□ □□□ (IATA)	: Not regulated
□□ □□□ (ADN)	: Not regulated
□□ □□□ (RID)	: Not regulated

## 14.3. □□□□□ □□□ □□

**ADR**  
□□□□□ □□□ □□ (ADR) : Not regulated

**IMDG**  
□□□□□ □□□ □□ (IMDG) : Not regulated

**IATA**  
□□□□□ □□□ □□ (IATA) : Not regulated

**ADN**  
□□□□□ □□□ □□ (ADN) : Not regulated

**RID**  
□□□□□ □□□ □□ (RID) : Not regulated

## 14.4. □□□□□

□□ □□ (ADR)	: Not regulated
□□ □□ (IMDG)	: Not regulated
□□ □□ (IATA)	: Not regulated
□□ □□ (ADN)	: Not regulated
□□ □□ (RID)	: Not regulated

## 14.5. □□ □□□□

□□ □□ □□□□ : □□ □□ □□ □□

## 14.6. □□□□ □□ □□ □□□□

□□ □□  
Not regulated

□□ □□  
Not regulated

□□ □□  
Not regulated

□□ □□ □□  
Not regulated

□□ □□  
Not regulated

## 14.7. □□□□□□(IMO) □□ □□ □□ □□

□□□□



# ETHYL VANILLIN EXTRA PURE

□□□□□□□□

□□ (EU) 2020/878 □□ □□□ REACH □□ (EC) 1907/2006 □□ □□

□□□

□□□ □□ □□

: Act of 25 February 2011 on chemical substances and their mixtures (J. o L. No. 63, item 322 as amended; consolidated text J. o L. 2019, item 1225).  
 Act of 14 December 2012 on waste (J. o L. 2013, item 322 as amended; consolidated text J. o L. 2020, item 797).  
 The announcement of Marshal of the Sejm of the Republic of Poland dated 19 October 2016 concerning the consolidated text announcement of the decree on the management of packaging and packaging waste (J. o L. 2016, item 1863 as amended).  
 Decree of the Minister of Environment of 14 December 2014 on the catalogue of waste (J. o L. 2014, item 1923).  
 Act of 19 August 2011 on the Carriage of Dangerous Goods (J. o L. 2011 No. 227, item 1367 as amended; consolidated text J. o L. 2020, item 154).  
 Regulation of the Minister of Family, Labour and Social Policy of 12 June 2018 on the highest permissible concentration and intensity of noxious agents for health at work environment (J. o L. item 1286 as amended).  
 The announcement of Minister of Health dated 9 September 2016 concerning the consolidated text announcement of the decree of the Minister of Health of 30 December 2004 on health and safety at work related to exposure to chemical agents at work (J. o L. of 16 September 2016, item 1488)  
 Regulation of the Minister of Health of 2 February 2011 on tests and measurements of the noxious agents for health at work environment (J. o L. No. 33, item 166 as amended).  
 Regulation of the Minister of Environment of 9 December 2003 on particularly hazardous substances to the environment (J. o L. No. 217, item 2141).  
 ADR Agreement: Government Statement of 13 March 2023 on the entry into force of amendments to Annexes A and B to the Agreement concerning the International Carriage of Dangerous Goods by Road (ADR), signed in Geneva on 30 September 1957 (J. o. L. 2023, item 891)

## 15.2. □□ □□ □□□ □□

No chemical safety assessment has been carried out

## □□ 16: □ □□ □□□□

□□ □ □□□□:	
ACGIH	American Conference of Government Industrial Hygienists
ADN	European Agreement concerning the International Carriage of Dangerous Goods by Inland Waterways
ADR	European Agreement concerning the International Carriage of Dangerous Goods by Road
ATE	Acute Toxicity Estimate
BCF	Bioconcentration factor
BLV	□□ □□ □
BOD	Biochemical oxygen demand (BOD)
CAS □□	□□□□ □□ □□ □□(CAS)
CLP	Classification Labelling Packaging Regulation; Regulation (EC) No 1272/2008
COD	□□□ □□ □□□
CSA	□□ □□ □□□ □□
DMEL	Derived Minimal Effect level
DNEL	□□ □□□ □□
EC □□	□□ □□□ □□
EC50	Median effective concentration
ED	□□□ □□□□
EN	□□ □□
EWC	European waste catalogue

