

□□ 1: □□□□ □□ □□ □□

1.1. □□□□

□□ □□

: □□

□□ □□

: LINEAR ALKYL BENZENE

EC □□

: 267-051-0

CAS □□

: 67774-74-7

□□ □□

: 4416F

□□ □□

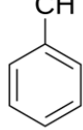
: Hydrocarbons, aromatic

□□ □□

: C₆H₅CHR₁R₂ where R₁ = C_nH_{2n+1} and R₂ = C_mH_{2m+1} m,n are integers m≥0, n≥1 (typically 10-16)

□□ □□

: $\text{H}(\text{CH}_2)_n\text{CH}(\text{CH}_2)_m\text{H}$



□□ □□

: LAB, Benzene C10-C13 alkyl Derivative

1.2. □□□□ □□ □□□□ □□ □□ □□ □□

□□ □□ □□

: Laboratory chemicals

□□□□/□□□□ □□

□□□ □□

Detergent

Surfactants

1.3. □□□□□□□□ □□ □□ □□

LOBA CHEMIE PVT.LTD.

107 Wode House Road, Jehangir Villa, Colaba

400005 Mumbai

INDIA

T +91 22 6663 6663, F +91 22 6663 6699

info@lobachemie.com, www.lobachemie.com

1.4. □□□□□□

□□ □□ □□

: + 91 22 6663 6663 (9:00am - 6:00 pm)

□□ 2: □□□·□□□□

2.1. □□□·□□□□ □□

Regulation (EC) No.1272/2008 [CLP] □□ □□ □□

□□□□ □□

□□□□□, □□ □□ □□ □□□□□□

To our knowledge, this product does not present any particular risk, provided it is handled in accordance with good occupational hygiene and safety practice.

2.2. □□□□□□□□ □□□ □□□□ □□

□□ (EC) No. 1272/2008 □□ □□ □□ [CLP]

□□ □□ □□

2.3. □□ □□

□□ □□

LINEAR ALKYL BENZENE

□□□□□□□□

□□ (EU) 2020/878 □□ □□□□ REACH □□ (EC) 1907/2006 □□ □□

□□ 3: □□□□□□ □□ □ □□□

3.1. □□□□

□□ □□ : □□□□□□

□□	□□□□	%
LINEAR ALKYL BENZENE	CAS □□: 67774-74-7 EC □□: 267-051-0	100

□□ 4: □□□□□□

4.1. □□□□ □□

□□ □□ □□ : If you feel unwell, seek medical advice.
□□□□ □□ : □□□ □□□ □□ □□□ □□□ □□□ □□□ □□□ □□□.
□□□ □□□□ □□ : Wash skin with plenty of water.
□□ □□□□ □□ : □□□□□ □□ □□ □□ □□□□.
□□□□ □□ : □□□□ □□□ □□□□(□□) □□□ □□□□.
First-aid measures for first aider : □□□□ □□□□ □□□ □□ □□ □□□ □□□□ □□□□.

4.2. □□ □ □□□ □□ □□□ □□ □ □□ □

□□ □ □□/□□ : None under normal conditions.
□□ □□ □ □□/□□ : None under normal conditions.
□ □□ □ □□/□□ : None under normal conditions.
□□ □ □□/□□ : None under normal conditions.

4.3. □□□□ □□ □ □□ □□ □□ □□ □□ □□

Treat symptomatically.

□□ 5: □□·□□□□ □□□□

5.1. □□□□ □□□□

□□□ □□□ : Water spray. Dry powder. Foam. Carbon dioxide.
□□□□ □□□ : Do not use a heavy water stream.

5.2. □□□□□□□□ □□□ □□ □□□□

□□ □□ : No fire hazard.
□□ □□ : No direct explosion hazard.
□□ □ □□□ □□□ □□ : Toxic fumes may be released.

5.3. □□□□ □□□□ □ □□□□□

□□ □□ : Fight fire from safe distance and protected location. Do not enter fire area without proper protective equipment, including respiratory protection.
□□ □□ □ □□ : Do not attempt to take action without suitable protective equipment. □□□ □□□□□□. Complete protective clothing.

□□ 6: □□□□□□ □□□□

6.1. □□□□ □□□□ □□ □□□ □□□□ □ □□□□

□□ □□ : □□□□ □□□□ □□ □□□□ □□ □□□□. □□□ □□□ □□ □□□□□ □□□ □□ □□□ □□. □□□ □□ □□□□ □□ □□□□ □□□□□□.
□□□ □□ □□ : Wear recommended personal protective equipment.

LINEAR ALKYL BENZENE

□□□□□□□□

□□ (EU) 2020/878 □□ □□□ REACH □□ (EC) 1907/2006 □□ □□

□□ □□ : Ventilate spillage area.

□□ □□ □□

□□ □□ : Do not attempt to take action without suitable protective equipment. □□ □□ □□ □□ 8: "□□□□ □□ □□□□□"□ □□□□□.

□□ □□ : Evacuate unnecessary personnel. □□□□ □□□□ □□ □□□□ □□ □□□□.

6.2. □□□ □□□□ □□ □□□ □□□□

□□□□ □□□□ □□□.

6.3. □□ □□ □□ □□

□□ □□ : Absorb spilled material with sand or earth. Contain any spills with dikes or absorbents to prevent migration and entry into sewers or streams. Stop leak without risks if possible.

□□ □□ : Take up liquid spill into absorbent material.

□ □□ □□□□ : Dispose of materials or solid residues at an authorized site.

6.4. □□ □□ □□

For further information refer to section 13.

□□ 7: □□ □ □□□□

7.1. □□□□□□

□□ □ □□□□□ □□ □□ : □□□□ □□ □□□□□□ □□ □□ □□□□ □□.

□□□□□□ : Ensure good ventilation of the work station. □□ □□□□ □□□□□.

□□ □□ : □ □□□ □□□□ □□ □□□, □□□□ □□□□ □□□. Always wash hands after handling the product.

7.2. □□□□ □□□ □□□ □□□ □□ □□

□□□ □□ : Keep in a cool, well-ventilated place away from heat.

□□ □□ : □□□□ □□□□ □□□□□ □□□□.

□□□ : Store always product in container of same material as original container.

□□□

□□ □□(LK) : LK 10/12 - □□

7.3. □□ □□ □□

□□ □□

□□ 8: □□□□ □ □□□□□

8.1. □□ □□ □□

□□ □□

8.2. □□□□

□□□ □□□ □□

□□□ □□□ □□:

Ensure good ventilation of the work station.

□□ □□□

□□ □□□:

Wear recommended personal protective equipment.

□□ □□ □□ □□:



LINEAR ALKYL BENZENE

□□□□□□□□

□□ (EU) 2020/878 □□ □□□□ REACH □□ (EC) 1907/2006 □□ □□

□□□□□□□□

□□□□:
Chemical goggles or safety glasses

Skin protection

□□□□:
Wear a mask

□□□□:
Protective gloves

□□□□□□
□□□□□□:
Wear appropriate mask

□□□□□□□□
□□□□□□□□:
□□□□□□□□□□□□.

□□ 9: □□□□□□ □□

9.1. □□□□□□□□□□ □□□□ □□ □□

□□□□ □□	: □□
□□	: Colourless.
□□	: Clear liquid.
□□□□	: 239 – 245 g/mol
□□	: Odourless.
□□ □□	: □□□□
□□□□	: □□□□
□□□□	: < -39 °C
□□ □□□□□□ □□ □□	: 270 – 320 °C
□□□□	: □□□□
□□ □□□□	: □□□□
□□ □□□□	: □□□□
□□□□	: > 130 °C
□□□□ □□	: 229 – 280 °C
□□ □□	: □□□□
pH	: □□□□
□□(□□□□)	: 4.03 mm ² /s at 40 °C
□□□□	: □: Immiscible with water.
Partition coefficient n-octanol/water (Log Kow)	: □□□□
Partition coefficient n-octanol/water (Log Pow)	: 6.4 – 7.9 at 25 °C
□□□□	: 0.013 hPa at 25 °C
50°C□□□□ □□□□	: □□□□
□□	: □□□□
□□	: 0.83 – 0.85
20°C□□□□ □□ □□ □□	: 8.4 (Air = 1)
□□ □□	: □□□□

9.2. □□□□□□□□

□□ □□

□□ 10: □□□□ □□□□

10.1. □□□□

The product is non-reactive under normal conditions of use, storage and transport.

10.2. □□□□ □□□□

Stable under normal conditions.

LINEAR ALKYL BENZENE

□□□□□□□□

□□ (EU) 2020/878 □□ □□□ REACH □□ (EC) 1907/2006 □□ □□

10.3. □□ □□□ □□□

No dangerous reactions known under normal conditions of use.

10.4. □□□ □□□

None under recommended storage and handling conditions (see section 7).

10.5. □□□ □□□

□□ □□

10.6. □□□ □□□□ □□□□

Under normal conditions of storage and use, hazardous decomposition products should not be produced.

□□ 11: □□□ □□ □□

11.1. □□ (EC) No 1272/2008 □□□□, □□□□ □□□ □□ □□

□□ □□ (□□)	:	□□□□ □□
□□ □□ (□□)	:	□□□□ □□
□□ □□ (□□)	:	□□□□ □□
□□ □□□ □□ □□□	:	□□□□ □□
□□ □□□ □□ □□□	:	□□□□ □□
□□□ □□ □□ □□□	:	□□□□ □□
□□□□ □□□□	:	□□□□ □□
□□□□	:	□□□□ □□
□□□□	:	□□□□ □□
□□ □□□□ □□ (1□ □□)	:	□□□□ □□
□□ □□□□ □□ (□□ □□)	:	□□□□ □□
□□ □□□□	:	□□□□ □□

LINEAR ALKYL BENZENE (67774-74-7)

□□(□□□)	4.03 mm ² /s at 40 °C
---------	----------------------------------

11.2. □□ □□ □□

□□ □□

□□ 12: □□□ □□□ □□

12.1. □□

□□□ - □□	:	The product is not considered harmful to aquatic organisms nor to cause long-term adverse effects in the environment.
□□ □□□□ □□□	:	□□□□ □□
□□ □□□□ □□□	:	□□□□ □□

12.2. □□□ □□ □□□

LINEAR ALKYL BENZENE (67774-74-7)

□□□ □□□□	□□ □□ □□
----------	----------

12.3. □□ □□□

LINEAR ALKYL BENZENE (67774-74-7)

Partition coefficient n-octanol/water (Log Pow)	6.4 – 7.9 at 25 °C
---	--------------------

12.4. □□ □□□

□□ □□

LINEAR ALKYL BENZENE

□□□□□□□□

□□ (EU) 2020/878 □□ □□□ REACH □□ (EC) 1907/2006 □□ □□

12.5. PBT □ vPvB □□ □□

□□ □□

12.6. □□□ □□ □□

□□ □□

12.7. □□ □□ □□

□□ □□

□□ 13: □□□ □□□□

13.1. □□□ □□□

□□ □□(□□□)

□□□ □□□

□□ □□ □□ □□

□□/□□ □□ □□□□

□□ □□

- : Disposal must be done according to official regulations.
- : Dispose of contents/container in accordance with licensed collector's sorting instructions.
- : Disposal must be done according to official regulations.
- : Disposal must be done according to official regulations.
- : Do not re-use empty containers.

□□ 14: □□□ □□□ □□

ADR / IMDG / IATA / ADN / RID □□ □□

14.1. UN □□ □□ ID □□

□□ □□□□ □□□□

14.2. UN □□ □□□

□□ □□□ (ADR)

: Not regulated

□□ □□□ (IMDG)

: Not regulated

□□ □□□ (IATA)

: Not regulated

□□ □□□ (ADN)

: Not regulated

□□ □□□ (RID)

: Not regulated

14.3. □□□□□ □□□ □□

ADR

□□□□□ □□□ □□ (ADR)

: Not regulated

IMDG

□□□□□ □□□ □□ (IMDG)

: Not regulated

IATA

□□□□□ □□□ □□ (IATA)

: Not regulated

ADN

□□□□□ □□□ □□ (ADN)

: Not regulated

RID

□□□□□ □□□ □□ (RID)

: Not regulated

14.4. □□□□

□□ □□ (ADR)

: Not regulated

□□ □□(IMDG)

: Not regulated

□□ □□ (IATA)

: Not regulated

□□ □□(ADN)

: Not regulated

□□ □□(RID)

: Not regulated

LINEAR ALKYL BENZENE

□□□□□□□□

□□ (EU) 2020/878 □□ □□□ REACH □□ (EC) 1907/2006 □□ □□

14.5. □□ □□□

□□ □□□□ : □□ □□ □□ □□

14.6. □□□□ □□ □□ □□□□

□□ □□

Not regulated

□□ □□

Not regulated

□□ □□

Not regulated

□□ □□ □□

Not regulated

□□ □□

Not regulated

14.7. □□□□□□(IMO) □□ □□ □□ □□

□□□□

□□ 15: □□ □□□□

15.1. □□, □□ □□□□ □□□□ □□ □□□□ □□ □□ □□/□□

EU □□

REACH □□□ XVII (□□ □□)

REACH □□□ XVII □□□□ □□

REACH □□□ XIV (□□ □□)

REACH □□□ XIV (□□ □□) □□□□ □□

REACH □□ □□ □□ (SVHC)

REACH □□ □□ □□ □□□□ □□

PIC □□ (□□□□□□)

PIC □□□ □□□□ □□ (□□ EU 649/2012)

POP □□ (□□□ □□ □□□□)

POP □□□ □□□□ □□ (□□ EU 2019/1021)

Ozone Regulation (2024/590)

Not listed on the Ozone Depletion list (Regulation EU 2024/590)

□□□□ □□(428/2009)

Not listed on the COUNCIL REGULATION (EC) of dual-use items.

□□ □□□□ □□ (2019/1148)

□□□ □□□□ □□(□□ □□□□□ □□ □ □□□ □□ □□ EU 2019/1148) □□□ □□ □□□□ □□

□□ □□□□ □□ (273/2004)

□□ □□□□ □□□ □□□ □□□□ □□(□□ □ □□□□ □□□ □□ □□□ □□ □□ □□ □□ □□ EC 273/2004)

□□ □□

□□□□□

Ordinance on Flammable Liquids (VbF) : □□□□ □□.

□□

VOC ordinance (ChemVOCFarbV) :

LINEAR ALKYL BENZENE

□□□□□□□□

□□ (EU) 2020/878 □□ □□□ REACH □□ (EC) 1907/2006 □□ □□

Employment restrictions : □□ □□ □□□ (MuSchG) □□ □□ □□.
 □□ □□□ □□□ (JArbSchG) □□ □□ □□.
 WGK : WGK 3, □□ □□ □□□ (Classification according to AwSV).
 □□ □□ □□(12. BImSchV) : □□ □□ □□(12. BImSchV) □□ □□ □□

□□□□

SZW-lijst van kankerverwekkende stoffen : LINEAR ALKYL BENZENE □(□) □□□ □□□□□
 SZW-lijst van mutagene stoffen : LINEAR ALKYL BENZENE □(□) □□□ □□□□□
 SZW-lijst van reprotoxische stoffen – Borstvoeding : □□□ □□□□ □□□□□.
 SZW-lijst van reprotoxische stoffen – Vruchtbaarheid : □□□ □□□□ □□□□□.
 SZW-lijst van reprotoxische stoffen – Ontwikkeling : □□□ □□□□ □□□□□.

15.2. □□ □□ □□□ □□

No chemical safety assessment has been carried out

□□ 16: □ □□ □□□□

□□ □ □□□□:	
ACGIH	American Conference of Government Industrial Hygienists
ADN	European Agreement concerning the International Carriage of Dangerous Goods by Inland Waterways
ADR	European Agreement concerning the International Carriage of Dangerous Goods by Road
ATE	Acute Toxicity Estimate
BCF	Bioconcentration factor
BLV	□□ □□ □
BOD	Biochemical oxygen demand (BOD)
CAS □□	□□□□ □□ □□ □□(CAS)
CLP	Classification Labelling Packaging Regulation; Regulation (EC) No 1272/2008
COD	□□□ □□ □□□
CSA	□□ □□ □□□ □□
DMEL	Derived Minimal Effect level
DNEL	□□ □□□ □□
EC □□	□□ □□□ □□
EC50	Median effective concentration
ED	□□□ □□□□
EN	□□ □□
EWC	European waste catalogue
IARC	International Agency for Research on Cancer
IATA	International Air Transport Association
IMDG	International Maritime Dangerous Goods
LC50	Median lethal concentration
LD50	Median lethal dose
LOAEL	Lowest Observed Adverse Effect Level
Log Kow	Partition coefficient n-octanol/water (Log Kow)
Log Pow	Partition coefficient n-octanol/water (Log Pow)
MAK	maximum workplace concentration

LINEAR ALKYL BENZENE

□□□□□□□□

□□ (EU) 2020/878 □□ □□□ REACH □□ (EC) 1907/2006 □□ □□

□□ □ □□□□:	
NOAEC	No-Observed Adverse Effect Concentration
NOAEL	No-Observed Adverse Effect Level
NOEC	No-Observed Effect Concentration
N.O.S.	Not Otherwise Specified
OECD	Organisation for Economic Co-operation and Development
OEL	□□□ □□ □□
OSHA	Occupational Safety & Health Administration
PBT	Persistent Bioaccumulative Toxic
PNEC	□□ □□□ □□
PPE	□□ □□□
RID	Regulations concerning the International Carriage of Dangerous Goods by Rail
SDS	□□□□□□□□
STP	Sewage treatment plant
TF	□□□ □□
ThOD	Theoretical oxygen demand (ThOD)
TLM	Median Tolerance Limit
TWA	Time Weighted Average
COV	Volatile Organic Compounds
vPvB	Very Persistent and Very Bioaccumulative
UFI	□□ □□ □□□

□□□□□□□□(SDS), EU

□ □□□ □□ □□□ □□□ □□ □□□ □□, □□ □ □□ □□□ □□□ □□ □□□□ □□ □□□□. □□□□ □□□ □□□ □□□ □□□ □□ □□ □□□□ □ □□□.