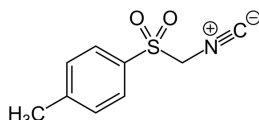


### SECTION 1: Identification of the substance/mixture and of the company/undertaking

#### 1.1. Product identifier

Product form : Substance  
Trade name : p-TOLUENE SULFONYLMETHYL ISOCYANIDE  
EC-No. : 253-140-1  
CAS-No. : 36635-61-7  
Product code : 6340F  
Formula : C<sub>9</sub>H<sub>9</sub>NO<sub>2</sub>S  
Chemical structure :



Synonyms : TosMIC, Tosylmethyl isocyanide, 1-(Isocyanomethanesulfonyl)-4-methylbenzene

#### 1.2. Relevant identified uses of the substance or mixture and uses advised against

##### 1.2.1. Relevant identified uses

Use of the substance/mixture : Laboratory chemicals  
Manufacture of substances

##### 1.2.2. Uses advised against

No additional information available

#### 1.3. Details of the supplier of the safety data sheet

LOBA CHEMIE PVT.LTD.  
107 Wode House Road, Jehangir Villa, Colaba  
400005 Mumbai  
INDIA  
T +91 22 6663 6663 - F +91 22 6663 6699  
[info@lobachemie.com](mailto:info@lobachemie.com) - [www.lobachemie.com](http://www.lobachemie.com)

#### 1.4. Emergency telephone number

Emergency number : + 91 22 6663 6663 (9:00am - 6:00 pm)

### SECTION 2: Hazards identification

#### 2.1. Classification of the substance or mixture

##### Classification according to Regulation (EC) No. 1272/2008 [CLP]

Acute toxicity (oral), Category 2 H300  
Acute toxicity (dermal), Category 2 H310  
Acute toxicity (inhal.), Category 2 H330  
Full text of H- and EUH-statements: see section 16

##### Adverse physicochemical, human health and environmental effects

Fatal in contact with skin. Fatal if inhaled. Fatal if swallowed.

#### 2.2. Label elements

##### Labelling according to Regulation (EC) No. 1272/2008 [CLP]

Hazard pictograms (CLP) :



GHS06

Signal word (CLP)

: Danger

# p-TOLUENE SULFONYLMETHYL ISOCYANIDE

## Safety Data Sheet

according to the REACH Regulation (EC) 1907/2006 amended by Regulation (EU) 2020/878

Hazard statements (CLP)	: H300+H310+H330 - Fatal if swallowed, in contact with skin or if inhaled.
Precautionary statements (CLP)	: P262 - Do not get in eyes, on skin, or on clothing. P280 - Wear protective clothing, eye protection, face protection, protective gloves. P301+P310 - IF SWALLOWED: Immediately call a POISON CENTER or doctor. P330 - Rinse mouth. P304+P340+P310 - IF INHALED: Remove person to fresh air and keep comfortable for breathing. Immediately call a POISON CENTER or doctor. P302+P352+P310 - IF ON SKIN: Wash with plenty of water. Immediately call a POISON CENTER or doctor.

### 2.3. Other hazards

No additional information available

## SECTION 3: Composition/information on ingredients

### 3.1. Substances

Substance type : Mono-constituent

Name	Product identifier	%
p-TOLUENE SULFONYLMETHYL ISOCYANIDE	CAS-No.: 36635-61-7 EC-No.: 253-140-1	100

### 3.2. Mixtures

Not applicable

## SECTION 4: First aid measures

### 4.1. Description of first aid measures

First-aid measures general	: Call a physician immediately.
First-aid measures after inhalation	: Remove person to fresh air and keep comfortable for breathing. Call a physician immediately. Call a doctor.
First-aid measures after skin contact	: Wash skin with plenty of water. Take off immediately all contaminated clothing. Call a physician immediately.
First-aid measures after eye contact	: Rinse eyes with water as a precaution.
First-aid measures after ingestion	: Rinse mouth. Call a physician immediately.

### 4.2. Most important symptoms and effects, both acute and delayed

No additional information available

### 4.3. Indication of any immediate medical attention and special treatment needed

Treat symptomatically.

## SECTION 5: Firefighting measures

### 5.1. Extinguishing media

Suitable extinguishing media : Water spray. Dry powder. Foam.

### 5.2. Special hazards arising from the substance or mixture

Hazardous decomposition products in case of fire : Toxic fumes may be released.

### 5.3. Advice for firefighters

Protection during firefighting : Do not attempt to take action without suitable protective equipment. Self-contained breathing apparatus. Complete protective clothing.

# p-TOLUENE SULFONYLMETHYL ISOCYANIDE

## Safety Data Sheet

according to the REACH Regulation (EC) 1907/2006 amended by Regulation (EU) 2020/878

### SECTION 6: Accidental release measures

#### 6.1. Personal precautions, protective equipment and emergency procedures

##### 6.1.1. For non-emergency personnel

Emergency procedures : Only qualified personnel equipped with suitable protective equipment may intervene. Do not breathe dust/fume/gas/mist/vapours/spray.

##### 6.1.2. For emergency responders

Protective equipment : Do not attempt to take action without suitable protective equipment. For further information refer to section 8: "Exposure controls/personal protection".

#### 6.2. Environmental precautions

Avoid release to the environment.

#### 6.3. Methods and material for containment and cleaning up

Methods for cleaning up : Mechanically recover the product.  
Other information : Dispose of materials or solid residues at an authorized site.

#### 6.4. Reference to other sections

For further information refer to section 13.

### SECTION 7: Handling and storage

#### 7.1. Precautions for safe handling

Precautions for safe handling : Do not get in eyes, on skin, or on clothing. Wear personal protective equipment. Use only outdoors or in a well-ventilated area. Do not breathe dust/fume/gas/mist/vapours/spray.  
Hygiene measures : Wash contaminated clothing before reuse. Do not eat, drink or smoke when using this product. Always wash hands after handling the product.

#### 7.2. Conditions for safe storage, including any incompatibilities

Storage conditions : Store locked up. Store in a well-ventilated place. Keep container tightly closed. Keep cool.  
Storage temperature : 2 – 8 °C

#### 7.3. Specific end use(s)

No additional information available

### SECTION 8: Exposure controls/personal protection

#### 8.1. Control parameters

##### 8.1.1 National occupational exposure and biological limit values

No additional information available

##### 8.1.2. Recommended monitoring procedures

No additional information available

##### 8.1.3. Air contaminants formed

No additional information available

##### 8.1.4. DNEL and PNEC

No additional information available

##### 8.1.5. Control banding

No additional information available

# p-TOLUENE SULFONYLMETHYL ISOCYANIDE

## Safety Data Sheet

according to the REACH Regulation (EC) 1907/2006 amended by Regulation (EU) 2020/878

### 8.2. Exposure controls

#### 8.2.1. Appropriate engineering controls

**Appropriate engineering controls:**

Ensure good ventilation of the work station.

#### 8.2.2. Personal protection equipment

**Personal protective equipment symbol(s):**



##### 8.2.2.1. Eye and face protection

**Eye protection:**

Chemical goggles or safety glasses

##### 8.2.2.2. Skin protection

**Skin and body protection:**

Wear a mask

**Hand protection:**

Protective gloves

##### 8.2.2.3. Respiratory protection

**Respiratory protection:**

Wear appropriate mask. [In case of inadequate ventilation] wear respiratory protection.

##### 8.2.2.4. Thermal hazards

No additional information available

#### 8.2.3. Environmental exposure controls

**Environmental exposure controls:**

Avoid release to the environment.

## SECTION 9: Physical and chemical properties

### 9.1. Information on basic physical and chemical properties

Physical state	: Solid
Colour	: White to yellow to light beige.
Appearance	: Powder. Chunks.
Molecular mass	: 195.24 g/mol
Odour	: Odourless.
Odour threshold	: Not available
Melting point	: 109 – 115 °C
Freezing point	: Not applicable
Boiling point	: Not available
Flammability	: Non flammable.
Lower explosion limit	: Not applicable
Upper explosion limit	: Not applicable
Flash point	: Not applicable
Auto-ignition temperature	: Not applicable
Decomposition temperature	: Not available
pH	: Not available
pH solution	: Not available
Viscosity, kinematic	: Not applicable
Solubility	: Water: Insoluble
Partition coefficient n-octanol/water (Log Kow)	: Not available
Vapour pressure	: Not available
Vapour pressure at 50°C	: Not available

# p-TOLUENE SULFONYLMETHYL ISOCYANIDE

## Safety Data Sheet

according to the REACH Regulation (EC) 1907/2006 amended by Regulation (EU) 2020/878

Density	: Not available
Relative density	: Not available
Relative vapour density at 20°C	: Not applicable
Particle size	: Not available

### 9.2. Other information

#### 9.2.1. Information with regard to physical hazard classes

No additional information available

#### 9.2.2. Other safety characteristics

No additional information available

## SECTION 10: Stability and reactivity

### 10.1. Reactivity

The product is non-reactive under normal conditions of use, storage and transport.

### 10.2. Chemical stability

Stable under normal conditions.

### 10.3. Possibility of hazardous reactions

No dangerous reactions known under normal conditions of use.

### 10.4. Conditions to avoid

None under recommended storage and handling conditions (see section 7).

### 10.5. Incompatible materials

No additional information available

### 10.6. Hazardous decomposition products

Under normal conditions of storage and use, hazardous decomposition products should not be produced.

## SECTION 11: Toxicological information

### 11.1. Information on hazard classes as defined in Regulation (EC) No 1272/2008

Acute toxicity (oral)	: Fatal if swallowed.
Acute toxicity (dermal)	: Fatal in contact with skin.
Acute toxicity (inhalation)	: Fatal if inhaled.
Skin corrosion/irritation	: Not classified
Serious eye damage/irritation	: Not classified
Respiratory or skin sensitisation	: Not classified
Germ cell mutagenicity	: Not classified
Carcinogenicity	: Not classified
Reproductive toxicity	: Not classified
STOT-single exposure	: Not classified
STOT-repeated exposure	: Not classified
Aspiration hazard	: Not classified

### p-TOLUENE SULFONYLMETHYL ISOCYANIDE (36635-61-7)

Viscosity, kinematic	Not applicable
----------------------	----------------

### 11.2. Information on other hazards

No additional information available

# p-TOLUENE SULFONYLMETHYL ISOCYANIDE

## Safety Data Sheet

according to the REACH Regulation (EC) 1907/2006 amended by Regulation (EU) 2020/878

### SECTION 12: Ecological information

#### 12.1. Toxicity

Ecology - general	: The product is not considered harmful to aquatic organisms nor to cause long-term adverse effects in the environment.
Hazardous to the aquatic environment, short-term (acute)	: Not classified
Hazardous to the aquatic environment, long-term (chronic)	: Not classified

#### 12.2. Persistence and degradability

No additional information available

#### 12.3. Bioaccumulative potential

No additional information available

#### 12.4. Mobility in soil

No additional information available

#### 12.5. Results of PBT and vPvB assessment

No additional information available

#### 12.6. Endocrine disrupting properties

No additional information available

#### 12.7. Other adverse effects

No additional information available

### SECTION 13: Disposal considerations

#### 13.1. Waste treatment methods

Waste treatment methods	: Dispose of contents/container in accordance with licensed collector's sorting instructions.
-------------------------	---

### SECTION 14: Transport information

In accordance with ADR / IMDG / IATA / ADN / RID

#### 14.1. UN number or ID number

UN-No. (ADR)	: UN 2811
UN-No. (IMDG)	: UN 2811
UN-No. (IATA)	: UN 2811
UN-No. (ADN)	: UN 2811
UN-No. (RID)	: UN 2811

#### 14.2. UN proper shipping name

Proper Shipping Name (ADR)	: TOXIC SOLID, ORGANIC, N.O.S.
Proper Shipping Name (IMDG)	: TOXIC SOLID, ORGANIC, N.O.S.
Proper Shipping Name (IATA)	: Toxic solid, organic, n.o.s.
Proper Shipping Name (ADN)	: TOXIC SOLID, ORGANIC, N.O.S.
Proper Shipping Name (RID)	: TOXIC SOLID, ORGANIC, N.O.S.
Transport document description (ADR)	: UN 2811 TOXIC SOLID, ORGANIC, N.O.S. (p-TOLUENESULFONYLMETHYL ISOCYANIDE), 6.1, III, (E)
Transport document description (IMDG)	: UN 2811 TOXIC SOLID, ORGANIC, N.O.S. (p-TOLUENESULFONYLMETHYL ISOCYANIDE), 6.1, III
Transport document description (IATA)	: UN 2811 Toxic solid, organic, n.o.s. (p-TOLUENESULFONYLMETHYL ISOCYANIDE), 6.1, III

# p-TOLUENE SULFONYLMETHYL ISOCYANIDE

## Safety Data Sheet

according to the REACH Regulation (EC) 1907/2006 amended by Regulation (EU) 2020/878

Transport document description (ADN) : UN 2811 TOXIC SOLID, ORGANIC, N.O.S., 6.1, III  
Transport document description (RID) : UN 2811 TOXIC SOLID, ORGANIC, N.O.S., 6.1, III

### 14.3. Transport hazard class(es)

#### ADR

Transport hazard class(es) (ADR) : 6.1  
Danger labels (ADR) : 6.1  
:



#### IMDG

Transport hazard class(es) (IMDG) : 6.1  
Danger labels (IMDG) : 6.1  
:



#### IATA

Transport hazard class(es) (IATA) : 6.1  
Danger labels (IATA) : 6.1  
:



#### ADN

Transport hazard class(es) (ADN) : 6.1  
Danger labels (ADN) : 6.1  
:



#### RID

Transport hazard class(es) (RID) : 6.1  
Danger labels (RID) : 6.1  
:



### 14.4. Packing group

Packing group (ADR) : III  
Packing group (IMDG) : III  
Packing group (IATA) : III  
Packing group (ADN) : III  
Packing group (RID) : III

### 14.5. Environmental hazards

Dangerous for the environment : No  
Marine pollutant : No  
Other information : No supplementary information available

# p-TOLUENE SULFONYLMETHYL ISOCYANIDE

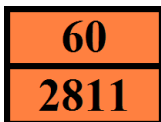
## Safety Data Sheet

according to the REACH Regulation (EC) 1907/2006 amended by Regulation (EU) 2020/878

### 14.6. Special precautions for user

#### Overland transport

Classification code (ADR)	: T2
Special provisions (ADR)	: 274, 614
Limited quantities (ADR)	: 5kg
Excepted quantities (ADR)	: E1
Packing instructions (ADR)	: P002, IBC08, LP02, R001
Special packing provisions (ADR)	: B3
Mixed packing provisions (ADR)	: MP10
Portable tank and bulk container instructions (ADR)	: T1
Portable tank and bulk container special provisions (ADR)	: TP33
Tank code (ADR)	: SGAH, L4BH
Tank special provisions (ADR)	: TU15, TE19
Vehicle for tank carriage	: AT
Transport category (ADR)	: 2
Special provisions for carriage - Bulk (ADR)	: VC1, VC2, AP7
Special provisions for carriage - Loading, unloading and handling (ADR)	: CV13, CV28
Special provisions for carriage - Operation (ADR)	: S9
Hazard identification number (Kemler No.)	: 60
Orange plates	:



Tunnel restriction code (ADR)	: E
EAC code	: 2X

#### Transport by sea

Special provisions (IMDG)	: 223, 274
Limited quantities (IMDG)	: 5 kg
Excepted quantities (IMDG)	: E1
Packing instructions (IMDG)	: P002
IBC packing instructions (IMDG)	: IBC08
IBC special provisions (IMDG)	: B3
Tank instructions (IMDG)	: T1
Tank special provisions (IMDG)	: TP33
EmS-No. (Fire)	: F-A
EmS-No. (Spillage)	: S-A
Stowage category (IMDG)	: A
Properties and observations (IMDG)	: Toxic if swallowed, by skin contact or by inhalation.

#### Air transport

PCA Excepted quantities (IATA)	: E1
PCA Limited quantities (IATA)	: Y645
PCA limited quantity max net quantity (IATA)	: 10kg
PCA packing instructions (IATA)	: 670
PCA max net quantity (IATA)	: 100kg
CAO packing instructions (IATA)	: 677
CAO max net quantity (IATA)	: 200kg
Special provisions (IATA)	: A3, A5
ERG code (IATA)	: 6L

#### Inland waterway transport

Classification code (ADN)	: T2
Special provisions (ADN)	: 274, 614, 802
Limited quantities (ADN)	: 5 kg
Excepted quantities (ADN)	: E1
Carriage permitted (ADN)	: T
Equipment required (ADN)	: PP, EP
Number of blue cones/lights (ADN)	: 0



# p-TOLUENE SULFONYLMETHYL ISOCYANIDE

## Safety Data Sheet

according to the REACH Regulation (EC) 1907/2006 amended by Regulation (EU) 2020/878

### Rail transport

Classification code (RID)	: T2
Special provisions (RID)	: 274, 614
Limited quantities (RID)	: 5kg
Excepted quantities (RID)	: E1
Packing instructions (RID)	: P002, IBC08, LP02, R001
Special packing provisions (RID)	: B3
Mixed packing provisions (RID)	: MP10
Portable tank and bulk container instructions (RID)	: T1
Portable tank and bulk container special provisions (RID)	: TP33
Tank codes for RID tanks (RID)	: SGAH, L4BH
Special provisions for RID tanks (RID)	: TU15
Transport category (RID)	: 2
Special provisions for carriage – Bulk (RID)	: VC1, VC2, AP7
Special provisions for carriage - Loading, unloading and handling (RID)	: CW13, CW28, CW31
Colis express (express parcels) (RID)	: CE11
Hazard identification number (RID)	: 60

### 14.7. Maritime transport in bulk according to IMO instruments

Not applicable

## SECTION 15: Regulatory information

### 15.1. Safety, health and environmental regulations/legislation specific for the substance or mixture

#### 15.1.1. EU-Regulations

##### REACH Annex XVII (Restriction List)

Not listed on REACH Annex XVII

##### REACH Annex XIV (Authorisation List)

Not listed on REACH Annex XIV (Authorisation List)

##### REACH Candidate List (SVHC)

Not listed on the REACH Candidate List

##### PIC Regulation (Prior Informed Consent)

Not listed on the PIC list (Regulation EU 649/2012)

##### POP Regulation (Persistent Organic Pollutants)

Not listed on the POP list (Regulation EU 2019/1021)

##### Ozone Regulation (1005/2009)

Not listed on the Ozone Depletion list (Regulation EU 1005/2009)

##### Explosives Precursors Regulation (2019/1148)

Contains no substance(s) listed on the Explosives Precursors list (Regulation EU 2019/1148 on the marketing and use of explosives precursors)

##### Drug Precursors Regulation (273/2004)

Contains no substance(s) listed on the Drug Precursors list (Regulation EC 273/2004 on the manufacture and the placing on market of certain substances used in the illicit manufacture of narcotic drugs and psychotropic substances)

#### 15.1.2. National regulations

##### Germany

Employment restrictions	: Observe restrictions according Act on the Protection of Working Mothers (MuSchG). Observe restrictions according Act on the Protection of Young People in Employment (JArbSchG).
Water hazard class (WGK)	: Not classified according to Regulation Governing Systems for Handling Substances Hazardous to Waters (AwSV).

# p-TOLUENE SULFONYLMETHYL ISOCYANIDE

## Safety Data Sheet

according to the REACH Regulation (EC) 1907/2006 amended by Regulation (EU) 2020/878

- Chemicals Prohibition Ordinance (ChemVerbotsV) : This product is subject to ChemVerbotsV Annex 2 Entry 1. The following requirements must be observed: authorization requirement (according to § 6 paragraph 1 sentence 1), basic requirements for carrying out the delivery (according to § 8 paragraph 1, 3 and 4), identification and documentation (according to § 9 paragraph 1 to 3) and exclusion of the shipping route (according to § 10).
- Hazardous Incident Ordinance (12. BImSchV) : Is not subject of the Hazardous Incident Ordinance (12. BImSchV)

### Netherlands

- SZW-lijst van kankerverwekkende stoffen : The substance is not listed
- SZW-lijst van mutagene stoffen : The substance is not listed
- SZW-lijst van reprotoxische stoffen – Borstvoeding : The substance is not listed
- SZW-lijst van reprotoxische stoffen – Vruchtbaarheid : The substance is not listed
- SZW-lijst van reprotoxische stoffen – Ontwikkeling : The substance is not listed

### Denmark

- Danish National Regulations : Young people below the age of 18 years are not allowed to use the product
- Pregnant/breastfeeding women working with the product must not be in direct contact with the product

### Switzerland

- Storage class (LK) : LK 6.1 - Toxic materials

## 15.2. Chemical safety assessment

No chemical safety assessment has been carried out

## SECTION 16: Other information

### Abbreviations and acronyms:

ADN	European Agreement concerning the International Carriage of Dangerous Goods by Inland Waterways
ADR	European Agreement concerning the International Carriage of Dangerous Goods by Road
ATE	Acute Toxicity Estimate
BCF	Bioconcentration factor
BLV	Biological limit value
BOD	Biochemical oxygen demand (BOD)
COD	Chemical oxygen demand (COD)
DMEL	Derived Minimal Effect level
DNEL	Derived-No Effect Level
EC-No.	European Community number
EC50	Median effective concentration
EN	European Standard
IARC	International Agency for Research on Cancer
IATA	International Air Transport Association
IMDG	International Maritime Dangerous Goods
LC50	Median lethal concentration
LD50	Median lethal dose
LOAEL	Lowest Observed Adverse Effect Level
NOAEC	No-Observed Adverse Effect Concentration
NOAEL	No-Observed Adverse Effect Level

# p-TOLUENE SULFONYLMETHYL ISOCYANIDE

## Safety Data Sheet

according to the REACH Regulation (EC) 1907/2006 amended by Regulation (EU) 2020/878

### Abbreviations and acronyms:

NOEC	No-Observed Effect Concentration
OECD	Organisation for Economic Co-operation and Development
OEL	Occupational Exposure Limit
PBT	Persistent Bioaccumulative Toxic
PNEC	Predicted No-Effect Concentration
RID	Regulations concerning the International Carriage of Dangerous Goods by Rail
SDS	Safety Data Sheet
STP	Sewage treatment plant
ThOD	Theoretical oxygen demand (ThOD)
TLM	Median Tolerance Limit
VOC	Volatile Organic Compounds
CAS-No.	Chemical Abstract Service number
N.O.S.	Not Otherwise Specified
vPvB	Very Persistent and Very Bioaccumulative
ED	Endocrine disrupting properties

### Full text of H- and EUH-statements:

Acute Tox. 2 (Dermal)	Acute toxicity (dermal), Category 2
Acute Tox. 2 (Inhalation)	Acute toxicity (inhal.), Category 2
Acute Tox. 2 (Oral)	Acute toxicity (oral), Category 2
H300	Fatal if swallowed.
H310	Fatal in contact with skin.
H330	Fatal if inhaled.

Safety Data Sheet (SDS), EU

This information is based on our current knowledge and is intended to describe the product for the purposes of health, safety and environmental requirements only. It should not therefore be construed as guaranteeing any specific property of the product.