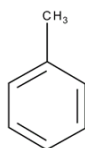


SECTION 1: Identification of the substance/mixture and of the company/undertaking

1.1. Product identifier

Product form	: Substance
Trade name	: TOLUENE GC REFERENCE STANDARD
IUPAC name	: Methyl benzene
EC Index-No.	: 601-021-00-3
EC-No.	: 203-625-9
CAS-No.	: 108-88-3
Product code	: GS190
Type of product	: Hydrocarbons, aromatic
Formula	: C ₇ H ₈
Chemical structure	:



Synonyms	: Benzylane, Phenyl methane, Toluol, Anisen
----------	---

1.2. Relevant identified uses of the substance or mixture and uses advised against

Relevant identified uses

Use of the substance/mixture	: Laboratory chemicals Reagent Solvents
------------------------------	---

1.3. Details of the supplier of the safety data sheet

LOBA CHEMIE PVT.LTD.
107 Wode House Road, Jehangir Villa, Colaba
400005 Mumbai
INDIA
T +91 22 6663 6663, F +91 22 6663 6699
info@lobachemie.com, www.lobachemie.com

1.4. Emergency telephone number

Emergency number	: + 91 22 6663 6663 (9:00am - 6:00 pm)
------------------	--

SECTION 2: Hazards identification

2.1. Classification of the substance or mixture

Classification according to Regulation (EC) No. 1272/2008 [CLP]

Flammable liquids, Category 2	H225
Skin corrosion/irritation, Category 2	H315
Reproductive toxicity, Category 2	H361d
Specific target organ toxicity – Single exposure, Category 3, Narcosis	H336
Specific target organ toxicity – Repeated exposure, Category 2	H373
Aspiration hazard, Category 1	H304
Full text of H- and EUH-statements: see section 16	

Adverse physicochemical, human health and environmental effects

Highly flammable liquid and vapour. Suspected of damaging fertility or the unborn child. May cause damage to organs through prolonged or repeated exposure. May cause drowsiness or dizziness. Causes skin irritation. May be fatal if swallowed and enters airways.

TOLUENE GC REFERENCE STANDARD

Safety Data Sheet

according to the REACH Regulation (EC) 1907/2006 amended by Regulation (EU) 2020/878

2.2. Label elements

Labelling according to Regulation (EC) No. 1272/2008 [CLP]

Hazard pictograms (CLP)



Signal word (CLP)

: Danger

Hazard statements (CLP)

: H225 - Highly flammable liquid and vapour.
H304 - May be fatal if swallowed and enters airways.
H315 - Causes skin irritation.
H336 - May cause drowsiness or dizziness.
H361d - Suspected of damaging the unborn child.
H373 - May cause damage to organs through prolonged or repeated exposure.
Precautionary statements (CLP) : P210 - Keep away from heat, hot surfaces, sparks, open flames and other ignition sources. No smoking.
P280 - Wear protective gloves, protective clothing, eye protection, face protection.
P301+P310 - IF SWALLOWED: Immediately call a POISON CENTER or doctor.
P303+P361+P353 - IF ON SKIN (or hair): Take off immediately all contaminated clothing. Rinse skin with water .
P304+P340 - IF INHALED: Remove person to fresh air and keep comfortable for breathing.
P331 - Do NOT induce vomiting.

2.3. Other hazards

No additional information available

SECTION 3: Composition/information on ingredients

3.1. Substances

Substance type

: Mono-constituent

Name	Product identifier	%
TOLUENE	CAS-No.: 108-88-3 EC-No.: 203-625-9 EC Index-No.: 601-021-00-3	100

SECTION 4: First aid measures

4.1. Description of first aid measures

First-aid measures general

: Call a physician immediately.

First-aid measures after inhalation

: Remove person to fresh air and keep comfortable for breathing.

First-aid measures after skin contact

: Rinse skin with water/shower. Take off immediately all contaminated clothing. If skin irritation occurs: Get medical advice/attention.

First-aid measures after eye contact

: Rinse eyes with water as a precaution.

First-aid measures after ingestion

: Do not induce vomiting. Call a physician immediately.

Self protection of the first-aider

: First-aiders should pay attention to their own protection and use the recommended personal protective equipment (see section 8).

4.2. Most important symptoms and effects, both acute and delayed

Symptoms/effects

: May cause drowsiness or dizziness.

Symptoms/effects after inhalation

: None under normal conditions.

Symptoms/effects after skin contact

: Irritation.

Symptoms/effects after eye contact

: None under normal conditions.

TOLUENE GC REFERENCE STANDARD

Safety Data Sheet

according to the REACH Regulation (EC) 1907/2006 amended by Regulation (EU) 2020/878

Symptoms/effects after ingestion : Risk of lung oedema.

4.3. Indication of any immediate medical attention and special treatment needed

Treat symptomatically.

SECTION 5: Firefighting measures

5.1. Extinguishing media

Suitable extinguishing media : Water spray. Dry powder. Foam. Carbon dioxide.
Unsuitable extinguishing media : Do not use a heavy water stream.

5.2. Special hazards arising from the substance or mixture

Fire hazard : Highly flammable liquid and vapour.
Explosion hazard : No direct explosion hazard.
Hazardous decomposition products in case of fire : Toxic fumes may be released.

5.3. Advice for firefighters

Firefighting instructions : Fight fire from safe distance and protected location. Do not enter fire area without proper protective equipment, including respiratory protection.
Protection during firefighting : Do not attempt to take action without suitable protective equipment. Self-contained breathing apparatus. Complete protective clothing.

SECTION 6: Accidental release measures

6.1. Personal precautions, protective equipment and emergency procedures

General measures : Stop leak if safe to do so. Notify authorities if product enters sewers or public waters.
Absorb spillage to prevent material damage.

For non-emergency personnel

Protective equipment : Wear recommended personal protective equipment.
Emergency procedures : Ventilate spillage area. No open flames, no sparks, and no smoking. Do not breathe dust/fume/gas/mist/vapours/spray. Avoid contact with skin and eyes.

For emergency responders

Protective equipment : Do not attempt to take action without suitable protective equipment. For further information refer to section 8: "Exposure controls/personal protection".
Emergency procedures : Evacuate unnecessary personnel. Stop leak if safe to do so.

6.2. Environmental precautions

Avoid release to the environment.

6.3. Methods and material for containment and cleaning up

For containment : Absorb spilled material with sand or earth. Contain any spills with dikes or absorbents to prevent migration and entry into sewers or streams. Stop leak without risks if possible.
Methods for cleaning up : Take up liquid spill into absorbent material. Notify authorities if product enters sewers or public waters.
Other information : Dispose of materials or solid residues at an authorized site.

6.4. Reference to other sections

For further information refer to section 13.

SECTION 7: Handling and storage

7.1. Precautions for safe handling

Additional hazards when processed : Not expected to present a significant hazard under anticipated conditions of normal use.

TOLUENE GC REFERENCE STANDARD

Safety Data Sheet

according to the REACH Regulation (EC) 1907/2006 amended by Regulation (EU) 2020/878

Precautions for safe handling	: Keep away from heat, hot surfaces, sparks, open flames and other ignition sources. No smoking. Ground/bond container and receiving equipment. Use only non-sparking tools. Take precautionary measures against static discharge. Flammable vapours may accumulate in the container. Use explosion-proof equipment. Wear personal protective equipment. Obtain special instructions before use. Do not handle until all safety precautions have been read and understood. Do not breathe dust/fume/gas/mist/vapours/spray. Use only outdoors or in a well-ventilated area. Avoid contact with skin and eyes.
Hygiene measures	: Wash contaminated clothing before reuse. Do not eat, drink or smoke when using this product. Always wash hands after handling the product.

7.2. Conditions for safe storage, including any incompatibilities

Technical measures	: Ground/bond container and receiving equipment.
Storage conditions	: Store in a well-ventilated place. Keep cool. Keep container tightly closed. Store locked up.
Packaging materials	: Always store product in container of same material as original container.

Switzerland

Storage class (LK)	: LK 3 - Flammable liquids
--------------------	----------------------------

7.3. Specific end use(s)

No additional information available

SECTION 8: Exposure controls/personal protection

8.1. Control parameters

No additional information available

8.2. Exposure controls

Appropriate engineering controls

Appropriate engineering controls:

Ensure good ventilation of the work station.

Personal protection equipment

Personal protective equipment:

Wear recommended personal protective equipment.

Personal protective equipment symbol(s):



Eye and face protection

Eye protection:

Chemical goggles or safety glasses

Skin protection

Skin and body protection:

Wear a mask

Hand protection:

Protective gloves

Respiratory protection

Respiratory protection:

Wear appropriate mask. [In case of inadequate ventilation] wear respiratory protection.

Environmental exposure controls

Environmental exposure controls:

Avoid release to the environment.

TOLUENE GC REFERENCE STANDARD

Safety Data Sheet

according to the REACH Regulation (EC) 1907/2006 amended by Regulation (EU) 2020/878

SECTION 9: Physical and chemical properties

9.1. Information on basic physical and chemical properties

Physical state	: Liquid
Colour	: Colourless.
Appearance	: Clear liquid.
Molecular mass	: 92.14 g/mol
Odour	: aromatic benzene like.
Odour threshold	: 1.6 ppm
Melting point	: Not applicable
Freezing point	: -95 °C
Boiling point	: 110 – 111 °C
Flammability	: Highly flammable liquid and vapour.
Lower explosion limit	: 1.1 vol %
Upper explosion limit	: 7.1 vol %
Flash point	: 4 °C
Auto-ignition temperature	: 480 °C
Decomposition temperature	: Not available
pH	: Not available
Viscosity, kinematic	: 0.646 mm ² /s
Viscosity, dynamic	: 0.56 mPa·s at 25 °C
Solubility	: Water: 0.52 g/l at 25 °C - Immiscible Ethanol: Miscible Ether: Miscible Acetone: Miscible
Partition coefficient n-octanol/water (Log Kow)	: 2.73
Vapour pressure	: 2.8 kPa at 20°C
Vapour pressure at 50°C	: Not available
Density	: 0.867 g/cm ³ at 20°C
Relative density	: Not available
Relative vapour density at 20°C	: 3.14 (Air = 1)
Particle characteristics	: Not applicable

9.2. Other information

Other safety characteristics

Refractive index	: 1.494 – 1.497 (20 °C; 589 nm)
------------------	---------------------------------

SECTION 10: Stability and reactivity

10.1. Reactivity

Highly flammable liquid and vapour.

10.2. Chemical stability

Stable under normal conditions.

10.3. Possibility of hazardous reactions

No dangerous reactions known under normal conditions of use.

10.4. Conditions to avoid

Avoid contact with hot surfaces. Heat. No flames, no sparks. Eliminate all sources of ignition.

10.5. Incompatible materials

No additional information available

10.6. Hazardous decomposition products

Under normal conditions of storage and use, hazardous decomposition products should not be produced.

TOLUENE GC REFERENCE STANDARD

Safety Data Sheet

according to the REACH Regulation (EC) 1907/2006 amended by Regulation (EU) 2020/878

SECTION 11: Toxicological information

11.1. Information on hazard classes as defined in Regulation (EC) No 1272/2008

Acute toxicity (oral)	: Not classified
Acute toxicity (dermal)	: Not classified
Acute toxicity (inhalation)	: Not classified
Skin corrosion/irritation	: Causes skin irritation.
Serious eye damage/irritation	: Not classified
Respiratory or skin sensitisation	: Not classified
Germ cell mutagenicity	: Not classified
Carcinogenicity	: Not classified
Reproductive toxicity	: Suspected of damaging the unborn child.
STOT-single exposure	: May cause drowsiness or dizziness.
STOT-repeated exposure	: May cause damage to organs through prolonged or repeated exposure.
Aspiration hazard	: May be fatal if swallowed and enters airways.

TOLUENE GC REFERENCE STANDARD (108-88-3)

Viscosity, kinematic	0.646 mm ² /s
----------------------	--------------------------

11.2. Information on other hazards

No additional information available

SECTION 12: Ecological information

12.1. Toxicity

Ecology - general	: The product is not considered harmful to aquatic organisms nor to cause long-term adverse effects in the environment.
Hazardous to the aquatic environment, short-term (acute)	: Not classified
Hazardous to the aquatic environment, long-term (chronic)	: Not classified

12.2. Persistence and degradability

TOLUENE GC REFERENCE STANDARD (108-88-3)

Persistence and degradability	Rapidly degradable
-------------------------------	--------------------

12.3. Bioaccumulative potential

TOLUENE GC REFERENCE STANDARD (108-88-3)

Partition coefficient n-octanol/water (Log Kow)	2.73
---	------

12.4. Mobility in soil

No additional information available

12.5. Results of PBT and vPvB assessment

No additional information available

12.6. Endocrine disrupting properties

No additional information available

12.7. Other adverse effects

No additional information available

TOLUENE GC REFERENCE STANDARD

Safety Data Sheet

according to the REACH Regulation (EC) 1907/2006 amended by Regulation (EU) 2020/878

SECTION 13: Disposal considerations

13.1. Waste treatment methods

Regional waste regulation	: Disposal must be done according to official regulations.
Waste treatment methods	: Dispose of contents/container in accordance with licensed collector's sorting instructions.
Sewage disposal recommendations	: Disposal must be done according to official regulations.
Product/Packaging disposal recommendations	: Disposal must be done according to official regulations.
Additional information	: Flammable vapours may accumulate in the container. Do not re-use empty containers.
Ecological waste information	: The waste of the product should be considered as hazardous as the product itself, with the likelihood of impacting the environment in the same way. Consider the handling and disposal of the waste as defined by the product itself.

SECTION 14: Transport information

In accordance with ADR / IMDG / IATA / ADN / RID

14.1. UN number or ID number

UN-No. (ADR)	: UN 1294
UN-No. (IMDG)	: UN 1294
UN-No. (IATA)	: UN 1294
UN-No. (ADN)	: UN 1294
UN-No. (RID)	: UN 1294

14.2. UN proper shipping name

Proper Shipping Name (ADR)	: TOLUENE
Proper Shipping Name (IMDG)	: TOLUENE
Proper Shipping Name (IATA)	: Toluene
Proper Shipping Name (ADN)	: TOLUENE
Proper Shipping Name (RID)	: TOLUENE
Transport document description (ADR) (ADR)	: UN 1294 TOLUENE, 3, II, (D/E)
Transport document description (IMDG)	: UN 1294 TOLUENE, 3, II (7°C c.c.)
Transport document description (IATA)	: UN 1294 Toluene, 3, II
Transport document description (ADN)	: UN 1294 TOLUENE, 3, II
Transport document description (RID)	: UN 1294 TOLUENE, 3, II

14.3. Transport hazard class(es)

ADR

Transport hazard class(es) (ADR)	: 3
Danger labels (ADR)	: 3
	:



IMDG

Transport hazard class(es) (IMDG)	: 3
Danger labels (IMDG)	: 3
	:



IATA

Transport hazard class(es) (IATA)	: 3
Danger labels (IATA)	: 3

TOLUENE GC REFERENCE STANDARD

Safety Data Sheet

according to the REACH Regulation (EC) 1907/2006 amended by Regulation (EU) 2020/878



ADN

Transport hazard class(es) (ADN) : 3
Danger labels (ADN) : 3



RID

Transport hazard class(es) (RID) : 3
Danger labels (RID) : 3



14.4. Packing group

Packing group (ADR) : II
Packing group (IMDG) : II
Packing group (IATA) : II
Packing group (ADN) : II
Packing group (RID) : II

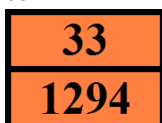
14.5. Environmental hazards

Dangerous for the environment : No
Marine pollutant : No
EmS-No. (Fire) : F-E
EmS-No. (Spillage) : S-D
Other information : No supplementary information available

14.6. Special precautions for user

Overland transport

Classification code (ADR) : F1
Limited quantities (ADR) : 1I
Excepted quantities (ADR) : E2
Packing instructions (ADR) : P001, IBC02, R001
Mixed packing provisions (ADR) : MP19
Portable tank and bulk container instructions (ADR) : T4
Portable tank and bulk container special provisions (ADR) : TP1
Tank code (ADR) : LGBF
Vehicle for tank carriage : FL
Transport category (ADR) : 2
Special provisions for carriage - Operation (ADR) : S2, S20
Hazard identification number (Kemler No.) : 33
Orange plates :



Tunnel restriction code (ADR) : D/E
EAC code : 3YE

Transport by sea

Limited quantities (IMDG) : 1 L

TOLUENE GC REFERENCE STANDARD

Safety Data Sheet

according to the REACH Regulation (EC) 1907/2006 amended by Regulation (EU) 2020/878

Excepted quantities (IMDG)	: E2
Packing instructions (IMDG)	: P001
IBC packing instructions (IMDG)	: IBC02
Tank instructions (IMDG)	: T4
Tank special provisions (IMDG)	: TP1
Stowage category (IMDG)	: B
Flash point (IMDG)	: 7°C c.c.
Properties and observations (IMDG)	: Colourless liquid with a benzene-like odour. Flashpoint: 7°C c.c. Explosive limits: 1.27% to 7%. Immiscible with water.

Air transport

PCA Excepted quantities (IATA)	: E2
PCA Limited quantities (IATA)	: Y341
PCA limited quantity max net quantity (IATA)	: 1L
PCA packing instructions (IATA)	: 353
PCA max net quantity (IATA)	: 5L
CAO packing instructions (IATA)	: 364
CAO max net quantity (IATA)	: 60L
ERG code (IATA)	: 3L

Inland waterway transport

Classification code (ADN)	: F1
Limited quantities (ADN)	: 1 L
Excepted quantities (ADN)	: E2
Carriage permitted (ADN)	: T
Equipment required (ADN)	: PP, EX, A
Ventilation (ADN)	: VE01
Number of blue cones/lights (ADN)	: 1

Rail transport

Classification code (RID)	: F1
Limited quantities (RID)	: 1L
Excepted quantities (RID)	: E2
Packing instructions (RID)	: P001, IBC02, R001
Mixed packing provisions (RID)	: MP19
Portable tank and bulk container instructions (RID)	: T4
Portable tank and bulk container special provisions (RID)	: TP1
Tank codes for RID tanks (RID)	: LGBF
Transport category (RID)	: 2
Colis express (express parcels) (RID)	: CE7
Hazard identification number (RID)	: 33

14.7. Maritime transport in bulk according to IMO instruments

Not applicable

SECTION 15: Regulatory information

15.1. Safety, health and environmental regulations/legislation specific for the substance or mixture

EU-Regulations

REACH Annex XVII (Restriction List)

EU restriction list (REACH Annex XVII)	
Reference code	Applicable on
3(a)	TOLUENE GC REFERENCE STANDARD
3(b)	TOLUENE GC REFERENCE STANDARD
40.	TOLUENE GC REFERENCE STANDARD

TOLUENE GC REFERENCE STANDARD

Safety Data Sheet

according to the REACH Regulation (EC) 1907/2006 amended by Regulation (EU) 2020/878

EU restriction list (REACH Annex XVII)	
Reference code	Applicable on
48.	TOLUENE GC REFERENCE STANDARD

REACH Annex XIV (Authorisation List)

Not listed on REACH Annex XIV (Authorisation List)

REACH Candidate List (SVHC)

Not listed on the REACH Candidate List

PIC Regulation (Prior Informed Consent)

Not listed on the PIC list (Regulation EU 649/2012)

POP Regulation (Persistent Organic Pollutants)

Not listed on the POP list (Regulation EU 2019/1021)

Ozone Regulation (2024/590)

Not listed on the Ozone Depletion list (Regulation EU 2024/590)

Council Regulation (EC) for the control of dual-use items

Not listed on the COUNCIL REGULATION (EC) of dual-use items.

Explosives Precursors Regulation (EU 2019/1148)

Not listed on the Explosives Precursors list (EU)

Drug Precursors Regulation (EC 273/2004)

Listed on the Drug Precursors list (EU)

Name	CN designation	CAS-No.	CN code	Category, Subcategory	Threshold	Annex
Toluene		108-88-3	2902 30 00	Category 3		Annex I

National regulations

Austria

Ordinance on Flammable Liquids (VbF) : Hazard category 2: Highly flammable (flash point < 23 °C and boiling point > 35 °C. Including motor gasoline).

Denmark

Class for fire hazard : Class I-1
Store unit : 1 liter
Classification remarks : F <Flam. Liq. 2>; Emergency management guidelines for the storage of flammable liquids must be followed
Danish National Regulations : Young people below the age of 18 years are not allowed to use the product
Pregnant/breastfeeding women working with the product must not be in direct contact with it.
If an employee is pregnant or breastfeeding and the person in question uses or is exposed to this product at work, the employer must always carry out a risk assessment of the work. The assessment must both deal with the dangerousness of the impact and its strength and duration. The employer's decision that a pregnant or lactating woman can perform a specific work task must therefore be made in the context of her specific working conditions. See also WEA-Guideline A.1.8-7 on the working environment of pregnant and breastfeeding workers. Listed or contains substance(s) on the Denmark - Indicative list of organic solvents present in Annex 3.4.1 of the WEA Guidance C.0.1-1: Toluene (1996) (108-88-3)

Finland

France

TOLUENE GC REFERENCE STANDARD

Safety Data Sheet

according to the REACH Regulation (EC) 1907/2006 amended by Regulation (EU) 2020/878

Occupational diseases	
Code	Description
RG 4 BIS	Gastrointestinal disorders caused by benzene, toluene, xylenes and all products containing them
RG 84	Conditions caused by liquid organic solvents for professional use: saturated or unsaturated aliphatic or cyclic liquid hydrocarbons and mixtures thereof; liquid halogenated hydrocarbons; nitrated derivatives of aliphatic hydrocarbons; alcohols; glycols, glycol ethers; ketones; aldehydes; aliphatic and cyclic ethers, including tetrahydrofuran; esters; dimethylformamide and dimethylacetamine; acetonitrile and propionitrile; pyridine; dimethylsulfone and dimethylsulfoxide

Germany

Employment restrictions : Observe restrictions according Act on the Protection of Working Mothers (MuSchG).
Observe restrictions according Act on the Protection of Young People in Employment (JArbSchG).
Water hazard class (WGK) : WGK 3, Highly hazardous to water (Classification according to AwSV; ID No. 194).
Major Accidents Ordinance (12. BImSchV) : Is listed in the Major Accidents Ordinance (12. BImSchV)

Major Accidents Ordinance (12. BImSchV)				
Number	Code	Title	Lower-tier	Upper-tier
1.2.5.1	P5a	Flammable liquids. Flammable liquids of category 1; flammable liquids of category 2 or 3 maintained at a temperature above their boiling point; other liquids with a flash point of ≤ 60 °C maintained at a temperature above their boiling point	10,000 kg	50,000 kg
1.2.5.2	P5b	Flammable liquids. Flammable liquids of category 2 or 3, where special processing conditions such as high pressure or high temperature can lead to the risk of accidents; other liquids with a flash point of ≤ 60 °C, where special processing conditions such as high pressure or high temperature can lead to the risk of accidents	50,000 kg	200,000 kg
1.2.5.3	P5c	Flammable liquids of categories 2 or 3, not covered under P5a and P5b	5,000,000 kg	50,000,000 kg

Netherlands

SZW-lijst van kankerverwekkende stoffen : The substance is not listed
SZW-lijst van mutagene stoffen : The substance is not listed
SZW-lijst van reprotoxische stoffen – Borstvoeding : The substance is not listed
SZW-lijst van reprotoxische stoffen – : The substance is not listed
Vruchtbaarheid
SZW-lijst van reprotoxische stoffen – Ontwikkeling : TOLUENE is listed

TOLUENE GC REFERENCE STANDARD

Safety Data Sheet

according to the REACH Regulation (EC) 1907/2006 amended by Regulation (EU) 2020/878

Poland

Polish National Regulations

: Act of 25 February 2011 on chemical substances and their mixtures (J. o L. No. 63, item 322 as amended; consolidated text J. o L. 2019, item 1225).
Act of 14 December 2012 on waste (J. o L. 2013, item 322 as amended; consolidated text J. o L. 2020, item 797).
The announcement of Marshal of the Sejm of the Republic of Poland dated 19 October 2016 concerning the consolidated text announcement of the decree on the management of packaging and packaging waste (J. o L. 2016, item 1863 as amended).
Decree of the Minister of Environment of 14 December 2014 on the catalogue of waste (J. o L. 2014, item 1923).
Act of 19 August 2011 on the Carriage of Dangerous Goods (J. o L. 2011 No. 227, item 1367 as amended; consolidated text J. o L. 2020, item 154).
Regulation of the Minister of Family, Labour and Social Policy of 12 June 2018 on the highest permissible concentration and intensity of noxious agents for health at work environment (J. o L. item 1286 as amended).
The announcement of Minister of Health dated 9 September 2016 concerning the consolidated text announcement of the decree of the Minister of Health of 30 December 2004 on health and safety at work related to exposure to chemical agents at work (J. o L. of 16 September 2016, item 1488).
Regulation of the Minister of Health of 2 February 2011 on tests and measurements of the noxious agents for health at work environment (J. o L. No. 33, item 166 as amended).
Regulation of the Minister of Environment of 9 December 2003 on particularly hazardous substances to the environment (J. o L. No. 217, item 2141).
ADR Agreement: Government Statement of 13 March 2023 on the entry into force of amendments to Annexes A and B to the Agreement concerning the International Carriage of Dangerous Goods by Road (ADR), signed in Geneva on 30 September 1957 (J. o. L. 2023, item 891).
Regulation of the Minister of Health of 25 August 2015 on the method of marking places, pipelines, and containers and tanks used for storing or containing hazardous substances or hazardous mixtures (J.o.L. 2015, item 1368 as amended).

Spain

Royal Decree 665/1997

: Is not subject to the Royal Decree 665/1997

15.2. Chemical safety assessment

No chemical safety assessment has been carried out

SECTION 16: Other information

Abbreviations and acronyms:

ACGIH	American Conference of Governmental Industrial Hygienists
ADN	European Agreement concerning the International Carriage of Dangerous Goods by Inland Waterways
ADR	European Agreement concerning the International Carriage of Dangerous Goods by Road
ATE	Acute Toxicity Estimate
BCF	Bioconcentration factor
BLV	Biological limit value
BOD	Biochemical oxygen demand (BOD)
CAS-No.	Chemical Abstracts Service number
CLP	Classification Labelling Packaging Regulation; Regulation (EC) No 1272/2008
COD	Chemical oxygen demand (COD)
CSA	Chemical safety assessment
DMEL	Derived Minimal Effect level
DNEL	Derived-No Effect Level

TOLUENE GC REFERENCE STANDARD

Safety Data Sheet

according to the REACH Regulation (EC) 1907/2006 amended by Regulation (EU) 2020/878

Abbreviations and acronyms:	
EC-No.	European Community number
EC50	Median effective concentration
ED	Endocrine disruptor
EN	European Standard
EWC	European waste catalogue
IARC	International Agency for Research on Cancer
IATA	International Air Transport Association
IMDG	International Maritime Dangerous Goods
LC50	Median lethal concentration
LD50	Median lethal dose
LOAEL	Lowest Observed Adverse Effect Level
Log Kow	Partition coefficient n-octanol/water (Log Kow)
Log Pow	Partition coefficient n-octanol/water (Log Pow)
MAK	maximum workplace concentration
NOAEC	No-Observed Adverse Effect Concentration
NOAEL	No-Observed Adverse Effect Level
NOEC	No-Observed Effect Concentration
N.O.S.	Not Otherwise Specified
OECD	Organisation for Economic Co-operation and Development
OEL	Occupational Exposure Limit
OSHA	Occupational Safety & Health Administration
PBT	Persistent Bioaccumulative Toxic
PNEC	Predicted No-Effect Concentration
PPE	Personal protection equipment
RID	Regulations concerning the International Carriage of Dangerous Goods by Rail
SDS	Safety Data Sheet
STP	Sewage treatment plant
TF	Technical function
ThOD	Theoretical oxygen demand (ThOD)
TLM	Median Tolerance Limit
TWA	Time Weighted Average
VOC	Volatile Organic Compounds
vPvB	Very Persistent and Very Bioaccumulative
UFI	Unique Formula Identifier

Full text of H- and EUH-statements:	
Asp. Tox. 1	Aspiration hazard, Category 1
Flam. Liq. 2	Flammable liquids, Category 2
Repr. 2	Reproductive toxicity, Category 2

TOLUENE GC REFERENCE STANDARD

Safety Data Sheet

according to the REACH Regulation (EC) 1907/2006 amended by Regulation (EU) 2020/878

Full text of H- and EUH-statements:

Skin Irrit. 2	Skin corrosion/irritation, Category 2
STOT RE 2	Specific target organ toxicity – Repeated exposure, Category 2
STOT SE 3	Specific target organ toxicity – Single exposure, Category 3, Narcosis
H225	Highly flammable liquid and vapour.
H304	May be fatal if swallowed and enters airways.
H315	Causes skin irritation.
H336	May cause drowsiness or dizziness.
H361d	Suspected of damaging the unborn child.
H373	May cause damage to organs through prolonged or repeated exposure.

Safety Data Sheet (SDS), EU

This information is based on our current knowledge and is intended to describe the product for the purposes of health, safety and environmental requirements only. It should not therefore be construed as guaranteeing any specific property of the product.