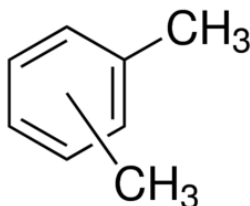


SECTION 1: Identification of the substance/mixture and of the company/undertaking

1.1. Product identifier

Product form	: Substance
Trade name	: XYLENE RECTIFIED EXTRA PURE
EC Index-No.	: 601-022-00-9
EC-No.	: 215-535-7
CAS-No.	: 1330-20-7
Product code	: 00370
Type of product	: Hydrocarbons, aromatic
Formula	: (CH ₃) ₂ C ₆ H ₄
Chemical structure	:



Synonyms	: Dimethyl benzene, Xylol
----------	---------------------------

1.2. Relevant identified uses of the substance or mixture and uses advised against

1.2.1. Relevant identified uses

Use of the substance/mixture	: Laboratory chemicals, Manufacture of substances
Use of the substance/mixture	: Solvents

1.2.2. Uses advised against

No additional information available

1.3. Details of the supplier of the safety data sheet

LOBA CHEMIE PVT.LTD.
107 Wode House Road, Jehangir Villa, Colaba
400005 Mumbai
INDIA
T +91 22 6663 6663, F +91 22 6663 6699
info@lobachemie.com, www.lobachemie.com

1.4. Emergency telephone number

Emergency number	: + 91 22 6663 6663 (9:00am - 6:00 pm)
------------------	--

SECTION 2: Hazards identification

2.1. Classification of the substance or mixture

Classification according to Regulation (EC) No. 1272/2008 [CLP]

Flammable liquids, Category 3	H226
Acute toxicity (dermal), Category 4	H312
Acute toxicity (inhal.), Category 4	H332
Skin corrosion/irritation, Category 2	H315
Specific target organ toxicity – Repeated exposure, Category 2	H373
Aspiration hazard, Category 1	H304
Hazardous to the aquatic environment – Chronic Hazard, Category 3	H412

Full text of H- and EUH-statements: see section 16

XYLENE RECTIFIED EXTRA PURE

Safety Data Sheet

according to the REACH Regulation (EC) 1907/2006 amended by Regulation (EU) 2020/878

Adverse physicochemical, human health and environmental effects

Flammable liquid and vapour. May cause damage to organs through prolonged or repeated exposure. Harmful in contact with skin. Harmful if inhaled. Causes skin irritation. Harmful to aquatic life with long lasting effects.

2.2. Label elements

Labelling according to Regulation (EC) No. 1272/2008 [CLP]

Hazard pictograms (CLP)



Signal word (CLP)

Hazard statements (CLP)

Precautionary statements (CLP)

- : Danger
- : H226 - Flammable liquid and vapour.
H304 - May be fatal if swallowed and enters airways.
H312+H332 - Harmful in contact with skin or if inhaled.
H315 - Causes skin irritation.
H373 - May cause damage to organs through prolonged or repeated exposure.
H412 - Harmful to aquatic life with long lasting effects.
- : P210 - Keep away from heat, hot surfaces, sparks, open flames and other ignition sources. No smoking.
P273 - Avoid release to the environment.
P280 - Wear protective clothing, eye protection, face protection, protective gloves.
P301+P310 - IF SWALLOWED: Immediately call a POISON CENTER or doctor.
P302+P352 - IF ON SKIN: Wash with plenty of soap and water.
P304+P340 - IF INHALED: Remove person to fresh air and keep comfortable for breathing.
P331 - Do NOT induce vomiting.

2.3. Other hazards

Contains no PBT and/or vPvB substances $\geq 0.1\%$ assessed in accordance with REACH Annex XIII

SECTION 3: Composition/information on ingredients

3.1. Substances

Substance type : Mono-constituent

Name	Product identifier	%
XYLENE RECTIFIED	CAS-No.: 1330-20-7 EC-No.: 215-535-7 EC Index-No.: 601-022-00-9	100

3.2. Mixtures

Not applicable

SECTION 4: First aid measures

4.1. Description of first aid measures

- First-aid measures general : Call a poison center or a doctor if you feel unwell.
- First-aid measures after inhalation : Remove person to fresh air and keep comfortable for breathing. Remove person to fresh air and keep comfortable for breathing. Call a POISON CENTER/doctor if you feel unwell. Call a poison center or a doctor if you feel unwell.
- First-aid measures after skin contact : Wash with plenty of water/.... Wash contaminated clothing before reuse. Get medical advice/attention. Rinse skin with water/shower. Take off immediately all contaminated clothing. If skin irritation occurs: Get medical advice/attention.
- First-aid measures after eye contact : Rinse cautiously with water for several minutes. Remove contact lenses, if present and easy to do. Continue rinsing. Get medical advice/attention.

XYLENE RECTIFIED EXTRA PURE

Safety Data Sheet

according to the REACH Regulation (EC) 1907/2006 amended by Regulation (EU) 2020/878

First-aid measures after ingestion : Rinse mouth out with water. If you feel unwell, seek medical advice. Call a poison center or a doctor if you feel unwell.

4.2. Most important symptoms and effects, both acute and delayed

Symptoms/effects after inhalation : May cause respiratory irritation.
Symptoms/effects after skin contact : Repeated exposure to this material can result in absorption through skin causing significant health hazard. Harmful in contact with skin. Causes skin irritation. Irritation.
Symptoms/effects after eye contact : None under normal conditions.
Symptoms/effects after ingestion : None under normal conditions.

4.3. Indication of any immediate medical attention and special treatment needed

Treat symptomatically.

SECTION 5: Firefighting measures

5.1. Extinguishing media

Suitable extinguishing media : Carbon dioxide. Dry powder. Foam. Water spray.
Unsuitable extinguishing media : Do not use extinguishing media containing water.

5.2. Special hazards arising from the substance or mixture

Fire hazard : Flammable liquid and vapour.
Explosion hazard : May form flammable/explosive vapour-air mixture.
Hazardous decomposition products in case of fire : Toxic fumes may be released.

5.3. Advice for firefighters

Firefighting instructions : Fight fire from safe distance and protected location. Do not enter fire area without proper protective equipment, including respiratory protection.
Protection during firefighting : Do not enter fire area without proper protective equipment, including respiratory protection. Do not attempt to take action without suitable protective equipment. Self-contained breathing apparatus. Complete protective clothing.

SECTION 6: Accidental release measures

6.1. Personal precautions, protective equipment and emergency procedures

General measures : Remove ignition sources. Use special care to avoid static electric charges. No open flames. No smoking. Stop leak if safe to do so. Notify authorities if product enters sewers or public waters. Absorb spillage to prevent material damage.

6.1.1. For non-emergency personnel

Protective equipment : Wear recommended personal protective equipment.
Emergency procedures : Ventilate spillage area. Evacuate unnecessary personnel. No open flames, no sparks, and no smoking. Do not breathe dust/fume/gas/mist/vapours/spray. Avoid contact with skin, eyes and clothing.

6.1.2. For emergency responders

Protective equipment : Do not attempt to take action without suitable protective equipment. Use personal protective equipment as required. For further information refer to section 8: "Exposure controls/personal protection".
Emergency procedures : Ventilate area. Evacuate unnecessary personnel. Stop leak if safe to do so.

6.2. Environmental precautions

Avoid release to the environment.

6.3. Methods and material for containment and cleaning up

For containment : Absorb spilled material with sand or earth. Contain any spills with dikes or absorbents to prevent migration and entry into sewers or streams. Stop leak without risks if possible.

XYLENE RECTIFIED EXTRA PURE

Safety Data Sheet

according to the REACH Regulation (EC) 1907/2006 amended by Regulation (EU) 2020/878

- Methods for cleaning up : Take up liquid spill into absorbent material. On land, sweep or shovel into suitable containers. Collect spillage. Notify authorities if product enters sewers or public waters.
- Other information : Dispose of materials or solid residues at an authorized site.

6.4. Reference to other sections

For further information refer to section 13.

SECTION 7: Handling and storage

7.1. Precautions for safe handling

- Additional hazards when processed : Handle empty containers with care because residual vapours are flammable.
- Precautions for safe handling : Keep away from sources of ignition - No smoking. Take precautionary measures against static discharge. Use only non-sparking tools. Use only outdoors or in a well-ventilated area. Do not breathe vapours. Keep away from heat, hot surfaces, sparks, open flames and other ignition sources. No smoking. Ground/bond container and receiving equipment. Flammable vapours may accumulate in the container. Use explosion-proof equipment. Wear personal protective equipment. Do not breathe dust/fume/gas/mist/vapours/spray. Do not get in eyes, on skin, or on clothing.
- Hygiene measures : Do not eat, drink or smoke when using this product. Wash hands and other exposed areas with mild soap and water before eating, drinking or smoking and when leaving work. Wash contaminated clothing before reuse. Always wash hands after handling the product.

7.2. Conditions for safe storage, including any incompatibilities

- Technical measures : Proper grounding procedures to avoid static electricity should be followed. Ground/bond container and receiving equipment.
- Storage conditions : Keep container tightly closed. Store in a well-ventilated place. Keep cool.
- Incompatible materials : Heat sources.
- Packaging materials : Store always product in container of same material as original container.

7.3. Specific end use(s)

No additional information available

SECTION 8: Exposure controls/personal protection

8.1. Control parameters

8.1.1 National occupational exposure and biological limit values

XYLENE RECTIFIED EXTRA PURE (1330-20-7)	
EU - Indicative Occupational Exposure Limit (IOEL)	
Local name	Xylene, mixed isomers, pure
IOEL TWA	221 mg/m ³
	50 ppm
IOEL STEL	442 mg/m ³
	100 ppm
Remark	Skin
Regulatory reference	COMMISSION DIRECTIVE 2000/39/EC
Germany - Occupational Exposure Limits (TRGS 900)	
Local name	Xylol (alle Isomere)
AGW (OEL TWA)	220 mg/m ³
	50 ppm
Peak exposure limitation factor	2(II)

XYLENE RECTIFIED EXTRA PURE

Safety Data Sheet

according to the REACH Regulation (EC) 1907/2006 amended by Regulation (EU) 2020/878

XYLENE RECTIFIED EXTRA PURE (1330-20-7)	
Remark	DFG - Senatskommission zur Prüfung gesundheitsschädlicher Arbeitsstoffe der DFG (MAK-Kommission); EU - Europäische Union (Von der EU wurde ein Luftgrenzwert festgelegt: Abweichungen bei Wert und Spitzenbegrenzung sind möglich); H - hautresorptiv
Regulatory reference	TRGS900
Portugal - Occupational Exposure Limits	
Local name	Xileno (isómeros)
OEL TWA	100 ppm
OEL STEL	150 ppm
Remark	A4 (Agente não classificável como carcinogénico no Homem); IBE (Índice biológico de exposição)
Regulatory reference	Norma Portuguesa NP 1796:2014
Portugal - Biological Exposure Indices	
Local name	Xilenos (graus técnico e comercial)
BEI	1.5 g/g creatinine Parâmetro: Ácidos (o, m, p)-metilhipúricos - Meio: urina - Momento da amostragem: Fim do turno
Regulatory reference	Norma Portuguesa NP 1796:2014
Spain - Occupational Exposure Limits	
Local name	Xileno, mezcla isómeros
VLA-ED (OEL TWA)	221 mg/m ³ 50 ppm
VLA-EC (OEL STEL)	442 mg/m ³ 100 ppm
Remark	Vía dérmica (Indica que, en las exposiciones a esta sustancia, la aportación por la vía cutánea puede resultar significativa para el contenido corporal total si no se adoptan medidas para prevenir la absorción. En estas situaciones, es aconsejable la utilización del control biológico para poder cuantificar la cantidad global absorbida del contaminante), VLB® (Agente químico que tiene Valor Límite Biológico), VLI (Agente químico para el que la U.E. estableció en su día un valor límite indicativo).
Regulatory reference	Límites de Exposición Profesional para Agentes Químicos en España 2023. INSHT
Spain - Biological limit values	
Local name	Xilenos, mezcla isómeros
BLV	1 g/g creatinine Parámetro: Ácidos metilhipúricos - Medio: Orina - Momento de muestreo: Final de la jornada laboral
Regulatory reference	Límites de Exposición Profesional para Agentes Químicos en España 2023. INSHT
United Kingdom - Occupational Exposure Limits	
Local name	Xylene
WEL TWA (OEL TWA)	220 mg/m ³ o-,m-,p- or mixed isomers 50 ppm o-,m-,p- or mixed isomers
WEL STEL (OEL STEL)	441 mg/m ³ o-,m-,p- or mixed isomers 100 ppm o-,m-,p- or mixed isomers
Remark	Sk (Can be absorbed through the skin. The assigned substances are those for which there are concerns that dermal absorption will lead to systemic toxicity)

XYLENE RECTIFIED EXTRA PURE

Safety Data Sheet

according to the REACH Regulation (EC) 1907/2006 amended by Regulation (EU) 2020/878

XYLENE RECTIFIED EXTRA PURE (1330-20-7)	
Regulatory reference	EH40/2005 (Fourth edition, 2020). HSE
United Kingdom - Biological limit values	
Local name	Xylene, o-, m-, p- or mixed isomers
BMGV	650 mmol/mol Creatinine Parameter: methyl hippuric acid - Medium: urine - Sampling time: Post shift
Regulatory reference	EH40/2005 (Fourth edition, 2020). HSE
USA - ACGIH - Occupational Exposure Limits	
Local name	Xylene, mixed isomers (Dimethylbenzene)
ACGIH OEL TWA	20 ppm
Remark (ACGIH)	TLV® Basis: URT & eye irr; hematologic eff; ototoxicity (for mixtures containing p-xylene); CNS impair. Notations: OTO (for mixtures containing p-xylene); A4 (Not classifiable as a Human Carcinogen); BEI
Regulatory reference	ACGIH 2024
USA - ACGIH - Biological Exposure Indices	
Local name	Xylenes (technical or commercial grade)
BEI	0.3 g/g creatinine Parameter: Methylhippuric acids (The determinants refer to the total of all isomers of methylhippuric acids) - Medium: urine - Sampling time: End of shift
Remark	Commercial or technical grade xylenes consist of mixtures of isomers and significant amounts of ethyl benzene as indicated under "Properties." Because ethyl benzene is known to reduce the metabolism of xylenes to methylhippuric acids, the BEI applies to technical or commercial grades of xylenes only. The determinants refer to the total of all isomers of methylhippuric acids
Regulatory reference	ACGIH 2024

8.1.2. Recommended monitoring procedures

No additional information available

8.1.3. Air contaminants formed

No additional information available

8.1.4. DNEL and PNEC

No additional information available

8.1.5. Control banding

No additional information available

8.2. Exposure controls

8.2.1. Appropriate engineering controls

Appropriate engineering controls:

Ensure good ventilation of the work station.

8.2.2. Personal protection equipment

Personal protective equipment:

Wear recommended personal protective equipment.

Personal protective equipment symbol(s):



XYLENE RECTIFIED EXTRA PURE

Safety Data Sheet

according to the REACH Regulation (EC) 1907/2006 amended by Regulation (EU) 2020/878

8.2.2.1. Eye and face protection

Eye protection:

Chemical goggles or safety glasses

8.2.2.2. Skin protection

Skin and body protection:

Wear a mask

Hand protection:

Protective gloves

8.2.2.3. Respiratory protection

Respiratory protection:

Wear appropriate mask

8.2.2.4. Thermal hazards

No additional information available

8.2.3. Environmental exposure controls

Environmental exposure controls:

Avoid release to the environment.

SECTION 9: Physical and chemical properties

9.1. Information on basic physical and chemical properties

Physical state	: Liquid
Colour	: Colourless.
Appearance	: Clear liquid.
Molecular mass	: 106.17 g/mol
Odour	: Sweet.
Odour threshold	: 0.2 – 2 ppm
Melting point	: Not applicable
Freezing point	: -47.4 °C
Boiling point	: 137 – 143 °C
Flammability	: Flammable Flammable liquid and vapour.
Lower explosion limit	: 1.1 vol %
Upper explosion limit	: 7 vol %
Flash point	: 30 °C
Auto-ignition temperature	: 466 °C
Decomposition temperature	: Not available
pH	: Neutral
Viscosity, kinematic	: 0.879 mm ² /s
Viscosity, dynamic	: 0.76 mPa·s at 25 °C
Solubility	: Water: Immiscible
Partition coefficient n-octanol/water (Log Kow)	: Not available
Vapour pressure	: 8.29 mm Hg at 25 °C
Vapour pressure at 50 °C	: Not available
Density	: 0.865 g/cm ³ at 20 °C
Relative density	: Not available
Relative vapour density at 20 °C	: 3.66 (Air=1)
Particle characteristics	: Not applicable

9.2. Other information

9.2.1. Information with regard to physical hazard classes

No additional information available

9.2.2. Other safety characteristics

Relative evaporation rate (butylacetate=1)	: 0.7
Miscibility	: > g/100ml

XYLENE RECTIFIED EXTRA PURE

Safety Data Sheet

according to the REACH Regulation (EC) 1907/2006 amended by Regulation (EU) 2020/878

Refractive index : 1.495 – 1.51 (20°C, 589 nm)

SECTION 10: Stability and reactivity

10.1. Reactivity

Flammable liquid and vapour.

10.2. Chemical stability

Stable under normal conditions.

10.3. Possibility of hazardous reactions

No dangerous reactions known under normal conditions of use.

10.4. Conditions to avoid

Open flame. Heat. Sparks. Avoid contact with hot surfaces. No flames, no sparks. Eliminate all sources of ignition.

10.5. Incompatible materials

No additional information available

10.6. Hazardous decomposition products

May release flammable gases.

SECTION 11: Toxicological information

11.1. Information on hazard classes as defined in Regulation (EC) No 1272/2008

Acute toxicity (oral)	: Not classified
Acute toxicity (dermal)	: Harmful in contact with skin.
Acute toxicity (inhalation)	: Harmful if inhaled.
Skin corrosion/irritation	: Causes skin irritation. pH: Neutral
Serious eye damage/irritation	: Not classified pH: Neutral
Respiratory or skin sensitisation	: Not classified
Germ cell mutagenicity	: Not classified
Carcinogenicity	: Not classified
Reproductive toxicity	: Not classified
STOT-single exposure	: Not classified
STOT-repeated exposure	: May cause damage to organs through prolonged or repeated exposure.
Aspiration hazard	: May be fatal if swallowed and enters airways.

XYLENE RECTIFIED EXTRA PURE (1330-20-7)

Viscosity, kinematic	0.879 mm ² /s
----------------------	--------------------------

11.2. Information on other hazards

11.2.1. Endocrine disrupting properties

No additional information available

11.2.2. Other information

Potential adverse human health effects and symptoms : Harmful in contact with skin.

XYLENE RECTIFIED EXTRA PURE

Safety Data Sheet

according to the REACH Regulation (EC) 1907/2006 amended by Regulation (EU) 2020/878

SECTION 12: Ecological information

12.1. Toxicity

Ecology - general : Harmful to aquatic life with long lasting effects.
Hazardous to the aquatic environment, short-term (acute) : Not classified
Hazardous to the aquatic environment, long-term (chronic) : Harmful to aquatic life with long lasting effects.

12.2. Persistence and degradability

XYLENE RECTIFIED EXTRA PURE (1330-20-7)

Persistence and degradability	Rapidly degradable
-------------------------------	--------------------

12.3. Bioaccumulative potential

No additional information available

12.4. Mobility in soil

No additional information available

12.5. Results of PBT and vPvB assessment

No additional information available

12.6. Endocrine disrupting properties

No additional information available

12.7. Other adverse effects

No additional information available

SECTION 13: Disposal considerations

13.1. Waste treatment methods

Regional waste regulation : Disposal must be done according to official regulations.
Waste treatment methods : Dispose of contents/container in accordance with licensed collector's sorting instructions.
Sewage disposal recommendations : Disposal must be done according to official regulations.
Product/Packaging disposal recommendations : Dispose of contents/container to hazardous or special waste collection point, in accordance with local, regional, national and/or international regulation. Disposal must be done according to official regulations.
Additional information : Handle empty containers with care because residual vapours are flammable. Flammable vapours may accumulate in the container. Do not re-use empty containers.

SECTION 14: Transport information

In accordance with ADR / IMDG / IATA / ADN / RID

14.1. UN number or ID number

UN-No. (ADR) : UN 1307
UN-No. (IMDG) : UN 1307
UN-No. (IATA) : UN 1307
UN-No. (ADN) : UN 1307
UN-No. (RID) : UN 1307

14.2. UN proper shipping name

Proper Shipping Name (ADR) : XYLENES
Proper Shipping Name (IMDG) : XYLENES

XYLENE RECTIFIED EXTRA PURE

Safety Data Sheet

according to the REACH Regulation (EC) 1907/2006 amended by Regulation (EU) 2020/878

Proper Shipping Name (IATA)	: Xylenes
Proper Shipping Name (ADN)	: XYLENES
Proper Shipping Name (RID)	: XYLENES
Transport document description (ADR)	: UN 1307 XYLENES, 3, III, (D/E)
Transport document description (IMDG)	: UN 1307 XYLENES, 3, III (23°C c.c.)
Transport document description (IATA)	: UN 1307 Xylenes, 3, III
Transport document description (ADN)	: UN 1307 XYLENES, 3, III
Transport document description (RID)	: UN 1307 XYLENES, 3, III

14.3. Transport hazard class(es)

ADR

Transport hazard class(es) (ADR)	: 3
Danger labels (ADR)	: 3



IMDG

Transport hazard class(es) (IMDG)	: 3
Danger labels (IMDG)	: 3



IATA

Transport hazard class(es) (IATA)	: 3
Danger labels (IATA)	: 3



ADN

Transport hazard class(es) (ADN)	: 3
Danger labels (ADN)	: 3



RID

Transport hazard class(es) (RID)	: 3
Danger labels (RID)	: 3



14.4. Packing group

Packing group (ADR)	: III
Packing group (IMDG)	: III
Packing group (IATA)	: III
Packing group (ADN)	: III
Packing group (RID)	: III

XYLENE RECTIFIED EXTRA PURE

Safety Data Sheet

according to the REACH Regulation (EC) 1907/2006 amended by Regulation (EU) 2020/878

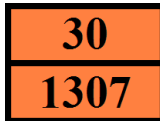
14.5. Environmental hazards

Dangerous for the environment	: No
Marine pollutant	: No
Other information	: No supplementary information available

14.6. Special precautions for user

Overland transport

Classification code (ADR)	: F1
Limited quantities (ADR)	: 5I
Excepted quantities (ADR)	: E1
Packing instructions (ADR)	: P001, IBC03, LP01, R001
Mixed packing provisions (ADR)	: MP19
Portable tank and bulk container instructions (ADR)	: T2
Portable tank and bulk container special provisions (ADR)	: TP1
Tank code (ADR)	: LGBF
Vehicle for tank carriage	: FL
Transport category (ADR)	: 3
Special provisions for carriage - Packages (ADR)	: V12
Special provisions for carriage - Operation (ADR)	: S2
Hazard identification number (Kemler No.)	: 30
Orange plates	:



Tunnel restriction code (ADR)	: D/E
EAC code	: 3Y

Transport by sea

Special provisions (IMDG)	: 223
Limited quantities (IMDG)	: 5 L
Excepted quantities (IMDG)	: E1
Packing instructions (IMDG)	: P001, LP01
IBC packing instructions (IMDG)	: IBC03
Tank instructions (IMDG)	: T2
Tank special provisions (IMDG)	: TP1
EmS-No. (Fire)	: F-E
EmS-No. (Spillage)	: S-D
Stowage category (IMDG)	: A
Flash point (IMDG)	: 23°C to 30°C c.c.
Properties and observations (IMDG)	: Colourless liquids. Flashpoint: 23°C to 30°C c.c. Explosive limits: 1.1% to 7%. Immiscible with water.
MFAG-No	: 130

Air transport

PCA Excepted quantities (IATA)	: E1
PCA Limited quantities (IATA)	: Y344
PCA limited quantity max net quantity (IATA)	: 10L
PCA packing instructions (IATA)	: 355
PCA max net quantity (IATA)	: 60L
CAO packing instructions (IATA)	: 366
CAO max net quantity (IATA)	: 220L
Special provisions (IATA)	: A3
ERG code (IATA)	: 3L

Inland waterway transport

Classification code (ADN)	: F1
Limited quantities (ADN)	: 5 L
Excepted quantities (ADN)	: E1
Carriage permitted (ADN)	: T
Equipment required (ADN)	: PP, EX, A

XYLENE RECTIFIED EXTRA PURE

Safety Data Sheet

according to the REACH Regulation (EC) 1907/2006 amended by Regulation (EU) 2020/878

Ventilation (ADN) : VE01
Number of blue cones/lights (ADN) : 0

Rail transport

Classification code (RID) : F1
Limited quantities (RID) : 5L
Excepted quantities (RID) : E1
Packing instructions (RID) : P001, IBC03, LP01, R001
Mixed packing provisions (RID) : MP19
Portable tank and bulk container instructions (RID) : T2
Portable tank and bulk container special provisions (RID) : TP1
Tank codes for RID tanks (RID) : LGBF
Transport category (RID) : 3
Special provisions for carriage – Packages (RID) : W12
Colis express (express parcels) (RID) : CE4
Hazard identification number (RID) : 30

14.7. Maritime transport in bulk according to IMO instruments

Not applicable

SECTION 15: Regulatory information

15.1. Safety, health and environmental regulations/legislation specific for the substance or mixture

15.1.1. EU-Regulations

REACH Annex XVII (Restriction List)

EU restriction list (REACH Annex XVII)	
Reference code	Applicable on
3(a)	XYLENE RECTIFIED EXTRA PURE
3(b)	XYLENE RECTIFIED EXTRA PURE
3(c)	XYLENE RECTIFIED EXTRA PURE
40.	XYLENE RECTIFIED EXTRA PURE

REACH Annex XIV (Authorisation List)

Not listed on REACH Annex XIV (Authorisation List)

REACH Candidate List (SVHC)

Not listed on the REACH Candidate List

PIC Regulation (Prior Informed Consent)

Not listed on the PIC list (Regulation EU 649/2012)

POP Regulation (Persistent Organic Pollutants)

Not listed on the POP list (Regulation EU 2019/1021)

Ozone Regulation (1005/2009)

Not listed on the Ozone Depletion list (Regulation EU 1005/2009)

Dual-Use Regulation (428/2009)

Contains no substance subject to the COUNCIL REGULATION (EC) No 428/2009 of 5 May 2009 setting up a Community regime for the control of exports, transfer, brokering and transit of dual-use items.

Explosives Precursors Regulation (2019/1148)

Contains no substance(s) listed on the Explosives Precursors list (Regulation EU 2019/1148 on the marketing and use of explosives precursors)

Drug Precursors Regulation (273/2004)

Contains no substance(s) listed on the Drug Precursors list (Regulation EC 273/2004 on the manufacture and the placing on market of certain substances used in the illicit manufacture of narcotic drugs and psychotropic substances)

XYLENE RECTIFIED EXTRA PURE

Safety Data Sheet

according to the REACH Regulation (EC) 1907/2006 amended by Regulation (EU) 2020/878

15.1.2. National regulations

France

Occupational diseases	
Code	Description
RG 4 BIS	Gastrointestinal disorders caused by benzene, toluene, xylenes and all products containing them
RG 84	Conditions caused by liquid organic solvents for professional use: saturated or unsaturated aliphatic or cyclic liquid hydrocarbons and mixtures thereof; liquid halogenated hydrocarbons; nitrated derivatives of aliphatic hydrocarbons; alcohols; glycols, glycol ethers; ketones; aldehydes; aliphatic and cyclic ethers, including tetrahydrofuran; esters; dimethylformamide and dimethylacetamine; acetonitrile and propionitrile; pyridine; dimethylsulfone and dimethylsulfoxide

Germany

Water hazard class (WGK) : WGK 2, Significantly hazardous to water (Classification according to AwSV; ID No. 206).
Hazardous Incident Ordinance (12. BImSchV) : Is not subject to the Hazardous Incident Ordinance (12. BImSchV)

Netherlands

SZW-lijst van kankerverwekkende stoffen : The substance is not listed
SZW-lijst van mutagene stoffen : The substance is not listed
SZW-lijst van reprotoxische stoffen – Borstvoeding : The substance is not listed
SZW-lijst van reprotoxische stoffen – Vruchtbaarheid : The substance is not listed
SZW-lijst van reprotoxische stoffen – Ontwikkeling : XYLENE RECTIFIED is listed

Denmark

Class for fire hazard : Class II-1
Store unit : 5 liter
Classification remarks : R10 <H226;H304;H312+H332;H315;H373;H412>; Emergency management guidelines for the storage of flammable liquids must be followed
Danish National Regulations : Young people below the age of 18 years are not allowed to use the product
Pregnant/breastfeeding women working with the product must not be in direct contact with the product

15.2. Chemical safety assessment

No chemical safety assessment has been carried out

SECTION 16: Other information

Abbreviations and acronyms:	
ADN	European Agreement concerning the International Carriage of Dangerous Goods by Inland Waterways
ADR	European Agreement concerning the International Carriage of Dangerous Goods by Road
ATE	Acute Toxicity Estimate
BCF	Bioconcentration factor
BLV	Biological limit value
BOD	Biochemical oxygen demand (BOD)
COD	Chemical oxygen demand (COD)
DMEL	Derived Minimal Effect level
DNEL	Derived-No Effect Level
EC-No.	European Community number
EC50	Median effective concentration
EN	European Standard

XYLENE RECTIFIED EXTRA PURE

Safety Data Sheet

according to the REACH Regulation (EC) 1907/2006 amended by Regulation (EU) 2020/878

Abbreviations and acronyms:	
IARC	International Agency for Research on Cancer
IATA	International Air Transport Association
IMDG	International Maritime Dangerous Goods
LC50	Median lethal concentration
LD50	Median lethal dose
LOAEL	Lowest Observed Adverse Effect Level
NOAEC	No-Observed Adverse Effect Concentration
NOAEL	No-Observed Adverse Effect Level
NOEC	No-Observed Effect Concentration
OECD	Organisation for Economic Co-operation and Development
OEL	Occupational Exposure Limit
PBT	Persistent Bioaccumulative Toxic
PNEC	Predicted No-Effect Concentration
RID	Regulations concerning the International Carriage of Dangerous Goods by Rail
SDS	Safety Data Sheet
STP	Sewage treatment plant
ThOD	Theoretical oxygen demand (ThOD)
TLM	Median Tolerance Limit
VOC	Volatile Organic Compounds
CAS-No.	Chemical Abstract Service number
N.O.S.	Not Otherwise Specified
vPvB	Very Persistent and Very Bioaccumulative
ED	Endocrine disrupting properties

Full text of H- and EUH-statements:	
Acute Tox. 4 (Dermal)	Acute toxicity (dermal), Category 4
Acute Tox. 4 (Inhalation)	Acute toxicity (inhal.), Category 4
Aquatic Chronic 3	Hazardous to the aquatic environment – Chronic Hazard, Category 3
Asp. Tox. 1	Aspiration hazard, Category 1
Flam. Liq. 3	Flammable liquids, Category 3
H226	Flammable liquid and vapour.
H304	May be fatal if swallowed and enters airways.
H312	Harmful in contact with skin.
H315	Causes skin irritation.
H332	Harmful if inhaled.
H373	May cause damage to organs through prolonged or repeated exposure.
H412	Harmful to aquatic life with long lasting effects.
Skin Irrit. 2	Skin corrosion/irritation, Category 2
STOT RE 2	Specific target organ toxicity – Repeated exposure, Category 2

XYLENE RECTIFIED EXTRA PURE

Safety Data Sheet

according to the REACH Regulation (EC) 1907/2006 amended by Regulation (EU) 2020/878

Safety Data Sheet (SDS), EU

This information is based on our current knowledge and is intended to describe the product for the purposes of health, safety and environmental requirements only. It should not therefore be construed as guaranteeing any specific property of the product.